

MIAMI APP CON
 120.5 350.225
 MIAMI INTL D-ATIS
 119.15
 MIAMI EXECUTIVE ATIS
 124.0
 NORTH PERRY ATIS
 135.475
 MIAMI-OPA LOCKA EXECUTIVE ATIS
 125.9

ARRIVAL ROUTE DESCRIPTION

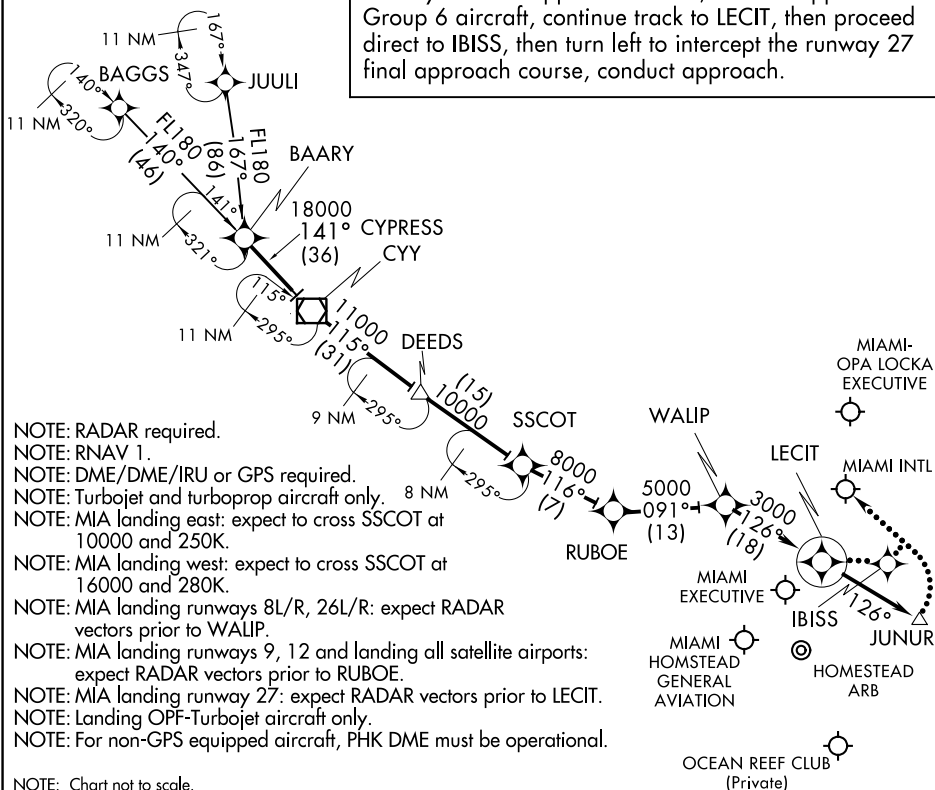
BAGGS TRANSITION (BAGGS.SSCOT5)
JUULI TRANSITION (JUULI.SSCOT5)

LANDING ALL AIRPORTS: From BAARY on track 141° to CYY VOR/DME, then on track 115° to DEEDS, then on track 115° to SSCOT, then on track 116° to RUBOE, then on track 091° to WALIP, then on track 126° to LECIT, then on heading 126° or as assigned by ATC. Expect RADAR vectors to final approach course.

LOST COMMUNICATIONS:

MIA LANDING EAST: Continue track to LECIT, intercept the runway 8L final approach course, conduct approach. Group 6 aircraft, continue track to LECIT, intercept the runway 8R final approach course, conduct approach.

MIA LANDING WEST: Continue track to LECIT, then proceed direct to JUNUR, then turn left to intercept the runway 30 final approach course, conduct approach. Group 6 aircraft, continue track to LECIT, then proceed direct to IBISS, then turn left to intercept the runway 27 final approach course, conduct approach.



- NOTE: RADAR required.
- NOTE: RNAV 1.
- NOTE: DME/DME/IRU or GPS required.
- NOTE: Turbojet and turboprop aircraft only.
- NOTE: MIA landing east: expect to cross SSCOT at 10000 and 250K.
- NOTE: MIA landing west: expect to cross SSCOT at 16000 and 280K.
- NOTE: MIA landing runways 8L/R, 26L/R: expect RADAR vectors prior to WALIP.
- NOTE: MIA landing runways 9, 12 and landing all satellite airports: expect RADAR vectors prior to RUBOE.
- NOTE: MIA landing runway 27: expect RADAR vectors prior to LECIT.
- NOTE: Landing OPF-Turbojet aircraft only.
- NOTE: For non-GPS equipped aircraft, PHK DME must be operational.

NOTE: Chart not to scale.

SE-3, 18 JUN 2020 to 16 JUL 2020

SE-3, 18 JUN 2020 to 16 JUL 2020