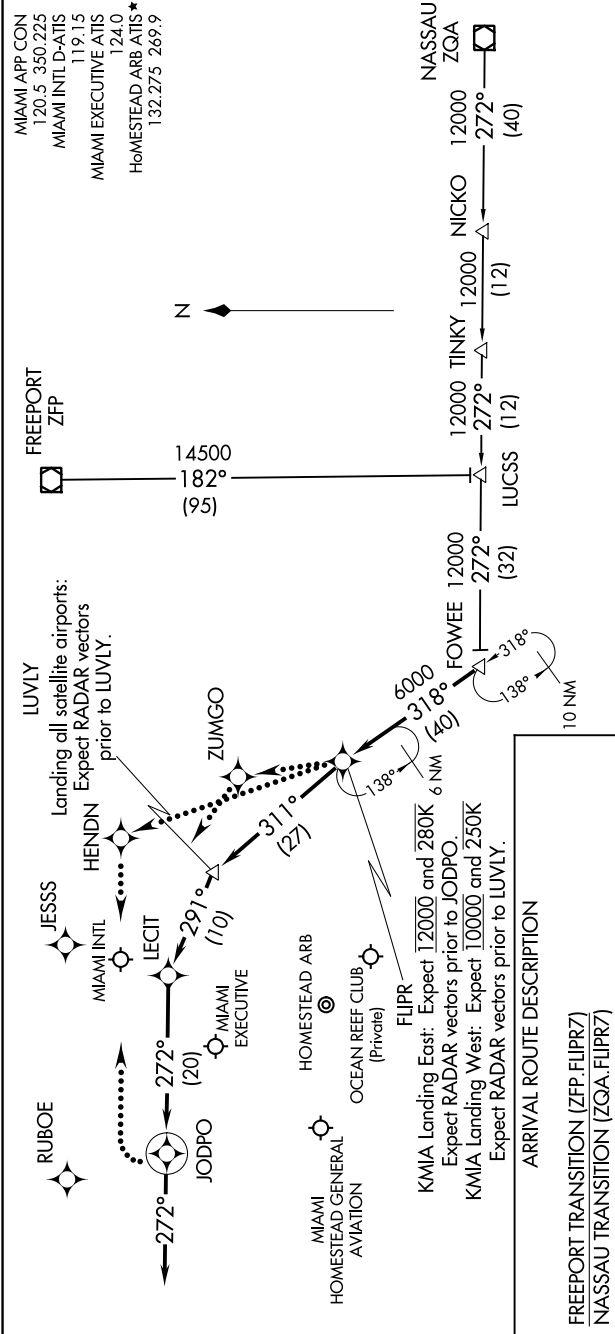


FLIPR SEVEN ARRIVAL (RNAV)

MIAMI, FLORIDA

020Z JUN 2020 to 16 JUL 2020 18 JUN 2020 18 JUN 2020 18 JUN 2020



MIAMI APP CON
120.5 350.2225
MIAMI INTL D-ATIS
119.15
MIAMI EXECUTIVE ATIS
124.0
HOMESTEAD ARB ATIS*
132.275 269.9

FREEPORT ZFP

14500
182°
(95)

6000
318°
(40)

280K
138°

250K

10 NM

FLIPR

KMIA Landing East: Expect 12000 and 280K
Expect RADAR vectors prior to JODPO

KMIA Landing West: Expect 10000 and 250K
Expect RADAR vectors prior to LUVLY.

ARRIVAL ROUTE DESCRIPTION

FREEPORT TRANSITION (ZFP.FLIPR7)

NASSAU TRANSITION (ZQA.FLIPR7)

NOTE: RADAR required.
NOTE: RNAV 1.
NOTE: DME/DME/IRU or GPS required.
NOTE: Turboprop and turboprop aircraft only.
NOTE: KMIA Primary Landing Rwy 9, 30.
NOTE: For non-GPS equipped aircraft:
VKZ and ZBV DME's must be operational.
NOTE: ZFP TRANSITION: For non-GPS equipped aircraft:
VKZ, ZBV, and ZFP DME's must be operational.
NOTE: ZFP TRANSITION: ATC assigned only.

NOTE: Chart not to scale.

FLIPR SEVEN ARRIVAL (RNAV)

MIAMI, FLORIDA

SE-3, 18 JUN 2020 to 16 JUL 2020