

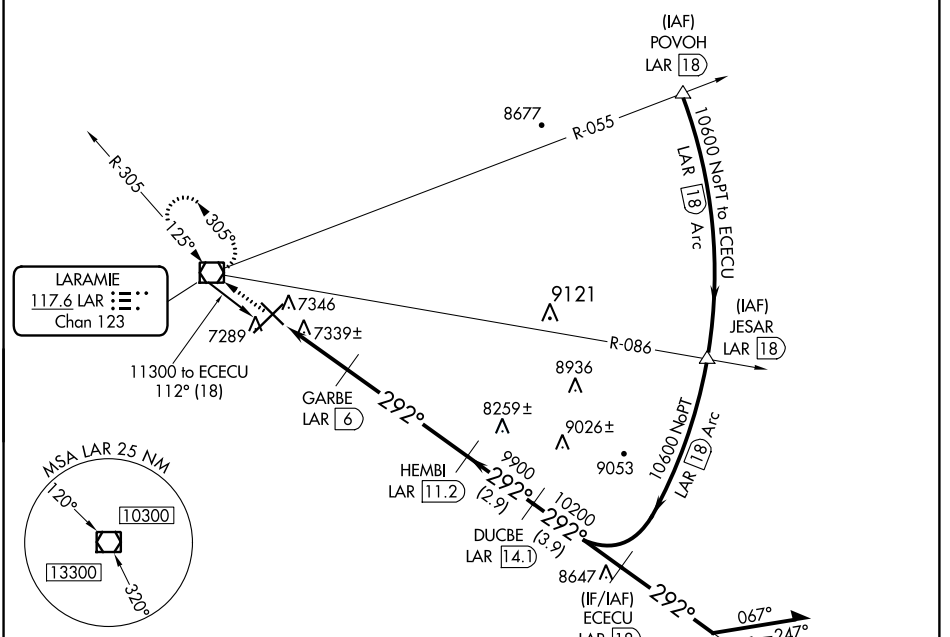
VOR/DME LAR 117.6 Chan 123	APP CRS 292°	Rwy Idg TDZE 6300 7278 Apt Elev 7284
---	------------------------	---

VOR/DME RWY 30

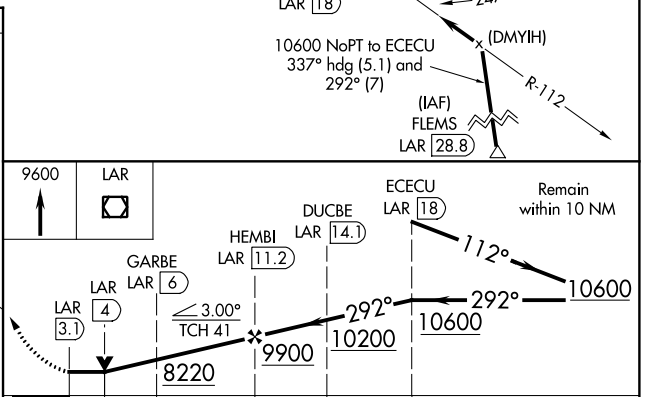
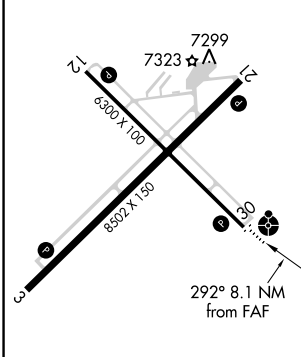
LARAMIE RGNL (LAR)

-35°C	ODALS 	MISSED APPROACH: Climb to 9600 direct LAR VOR/DME and hold, continue climb-in-hold to 9600.
	ASOS 135.475	DENVER CENTER 125.9 284.7

ASOS 135.475	DENVER CENTER 125.9 284.7	UNICOM 123.05 (CTAF)
------------------------	-------------------------------------	--------------------------------



ELEV 7284		TDZE 7278
-----------	--	-----------



CATEGORY	A	B	C	D
S-30	7600-¾ 322 (400-¾)			7600-1 322 (400-1)
CIRCLING	7660-1 376 (400-1)	7740-1 456 (500-1)	7740-1½ 456 (500-1½)	7840-2 556 (600-2)

NW-1, 18 JUN 2020 to 16 JUL 2020

NW-1, 18 JUN 2020 to 16 JUL 2020