

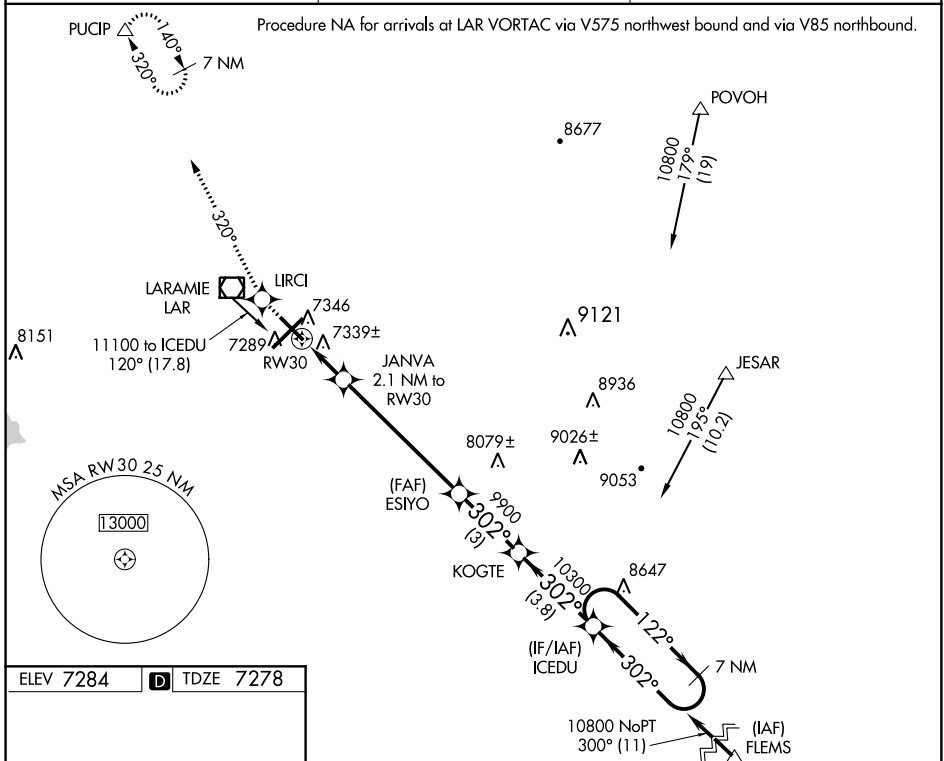
WAAS CH 53600 W30A	APP CRS 302°	Rwy Idg TDZE Apt Elev	6300 7278 7284
---------------------------------	------------------------	-----------------------------	---

RNAV (GPS) RWY 30

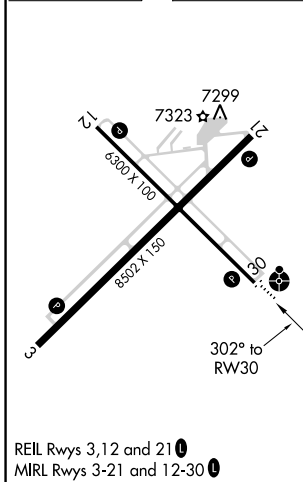
LARAMIE RGNL (L.A.R.)

-35°C Inop table does not apply. DME/DME RNP-0.3 NA. For uncompensated Baro-VNAV systems, LNAV/VNAV NA below -29°C (-20°F) or above 35°C (95°F).	ODALS 	MISSED APPROACH: Climb to 9400 direct LIRCI and via 320° track to PUCIP and hold.
---	-----------	--

ASOS 135.475	DENVER CENTER 125.9 284.7	UNICOM 123.05 (CTAF)
------------------------	-------------------------------------	--------------------------------



ELEV 7284	TDZE 7278
-----------	-----------



REIL Rwy 3, 12 and 21
 MIRL Rwy 3-21 and 12-30

9400	LIRCI	tr 320°	PUCIP	ICEDU	7 NM Holding Pattern
*LNAV only	JANVA 2.1 NM to RW30	ESIYO	KOGTE	ICEDU	7 NM Holding Pattern
	*0.9 NM to RW30				
	RW30				
	7980	9900	10300	10800	GP 3.00° TCH 41
	0.9	1.2 NM	5.8 NM	3 NM	3.8 NM
CATEGORY	A	B	C	D	
LPV DA		7528-1	250 (300-1)		
LNAV/VNAV DA		7629-1½	351 (400-1½)		
LNAV MDA		7600-1	322 (400-1)		
CIRCLING	7660-1½ 376 (400-1½)	7740-1½ 456 (500-1½)	7740-1½ 456 (500-1½)	7840-2 556 (600-2)	

NW-1, 18 JUN 2020 to 16 JUL 2020

NW-1, 18 JUN 2020 to 16 JUL 2020