

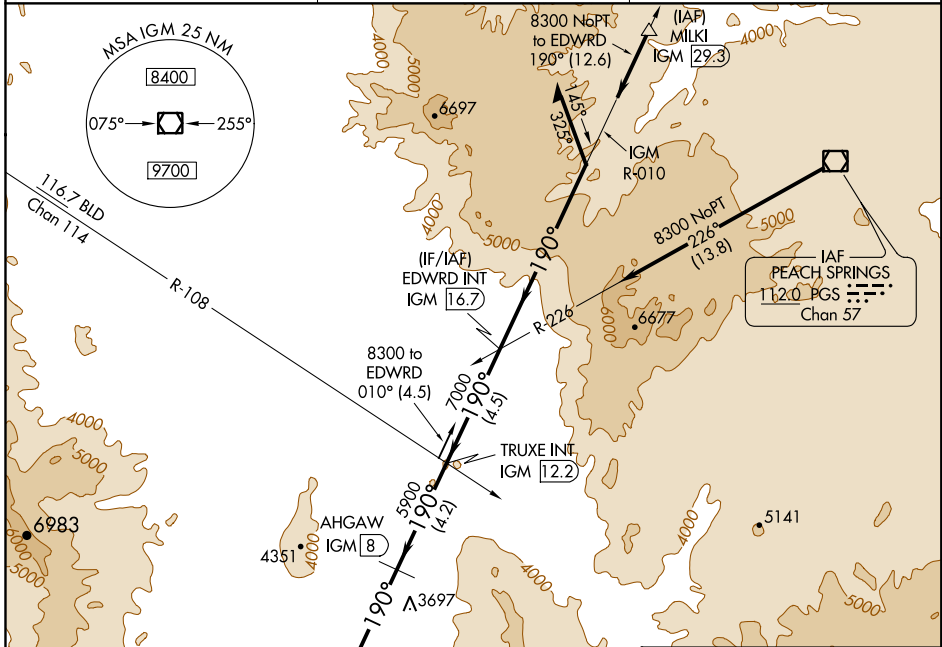
VOR/DME IGM 108.8 Chan 25	APP CRS 190°	Rwy Idg TDZE 6827 3403 Apt Elev 3449
--	------------------------	---

VOR/DME RWY 21

KINGMAN (IGM)

⚠ MISSED APPROACH: Climbing right turn to 6000 via IGM VOR/DME R-208 then climbing right turn to 9000 direct IGM VOR/DME and hold.

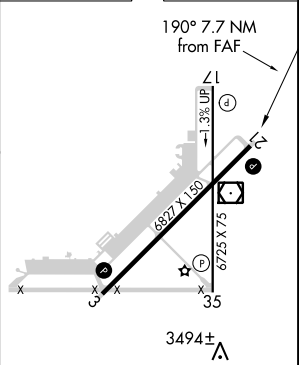
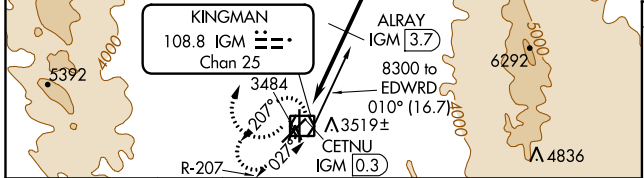
ASOS 119.275	LOS ANGELES CENTER 124.85 319.2	UNICOM 122.8 (CTAF) Ⓛ
------------------------	---	--



SW-4, 18 JUN 2020 to 16 JUL 2020

SW-4, 18 JUN 2020 to 16 JUL 2020

ELEV 3449 **D** TDZE 3403



6000 IGM R-208	9000 IGM	IGM	TRUXE INT IGM [12.2]	EDWRD INT IGM [16.7]	Remain within 10 NM
CETNU IGM [0.3]	ALRAY IGM [3.7]	AHGAW IGM [8]	3484	3519±	3697
4540		5900		7000	
3.4 NM		4.3 NM		4.2 NM	

CATEGORY	A	B	C	D
S-21	3880-1	477 (500-1)	3880-1¼ 477 (500-1¼)	3880-1½ 477 (500-1½)
CIRCLING	3980-1 531 (600-1)	4020-1 571 (600-1)	4020-1½ 571 (600-1½)	4140-2¼ 691 (700-2¼)

MIRL Rwy 3-21 and 17-35 **Ⓛ**
REIL Rwy 3 and 21 **Ⓛ**