


APP CRS 267°	Rwy Idg TDZE Apt Elev	9000 3852 3877
------------------------	-----------------------------	---

RNAV (RNP) Y RWY 27

HELENA RGNL (HLN)

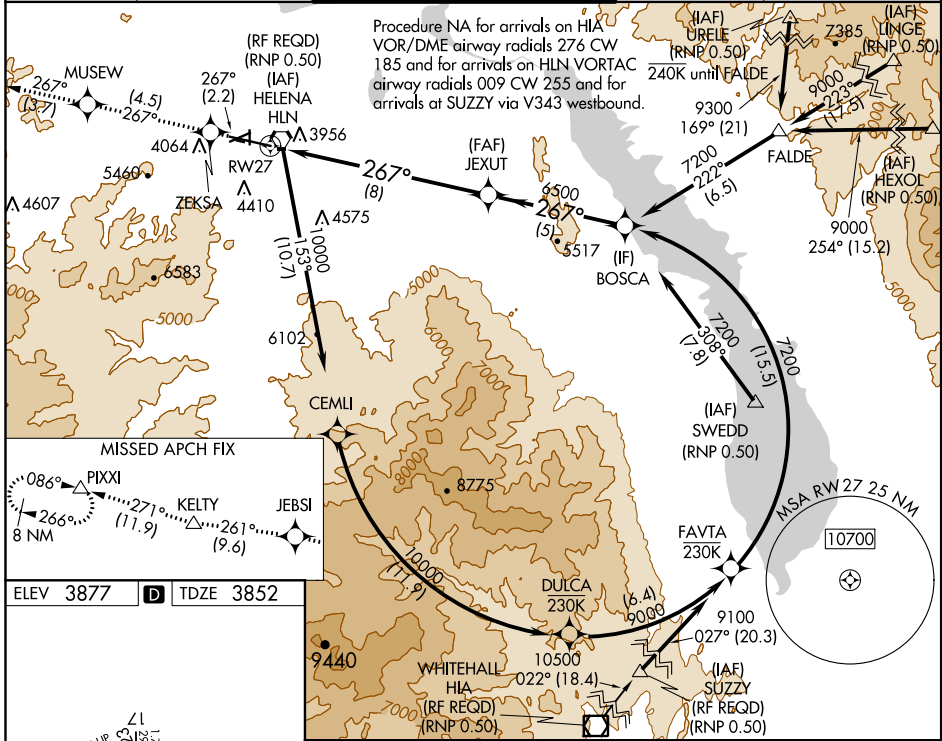
GPS required. For uncompensated Baro-VNAV systems, procedure NA below -22°C (-7°F) or above 41°C (105°F). For inoperative MALS, increase RNP 0.22* visibility to 1, and RNP 0.30# visibility to 1½. Missed approach requires RNP less than 1.0. *Missed approach requires minimum climb of 290 feet per NM to 7700; if unable, see RNAV (RNP) Z RWY 27. #Missed approach requires minimum climb of 270 feet per NM to 7600; if unable, see RNAV (RNP) Z RWY 27.

MALS



MISSED APPROACH: Climb to 13000 on track 267° to ZEKS, then on track 267° to MUSEW, then on track 267° to JEB, then on track 261° to KELTY, then on track 271° track to PIX and hold, continue climb-in-hold to 13000.

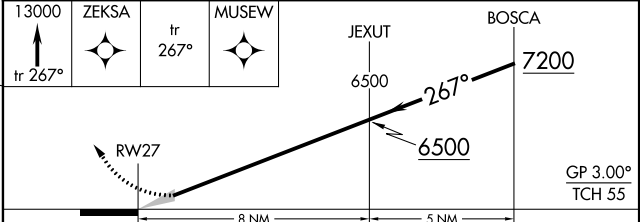
ATIS 120.4	HELENA APP CON * 119.5 229.4	HELENA TOWER * 118.3 (CTAF) 0 257.8	GND CON 121.9	UNICOM 122.95
----------------------	--	---	-------------------------	-------------------------



MISSED APCH FIX

PIX (086°)
KELTY (271°)
JEB (261°)

ELEV 3877	TDZE 3852
-----------	-----------



CATEGORY	A	B	C	D
RNP 0.22 DA*		4140-½	288 (300-½)	
RNP 0.30 DA#		4294-1	442 (500-1)	

REIL Rws 9, 17 and 35
MIRL Rws 5-23 and 17-35
HIRL Rwy 9-27

AUTHORIZATION REQUIRED

NW-1, 18 JUN 2020 to 16 JUL 2020

NW-1, 18 JUN 2020 to 16 JUL 2020