

LOC I-ILN <b>110.1</b>	APP CRS <b>267°</b>	Rwy Idg TDZE Apt Elev	<b>9000</b> <b>3852</b> <b>3877</b>
---------------------------	------------------------	-----------------------------	---

# ILS or LOC Z RWY 27

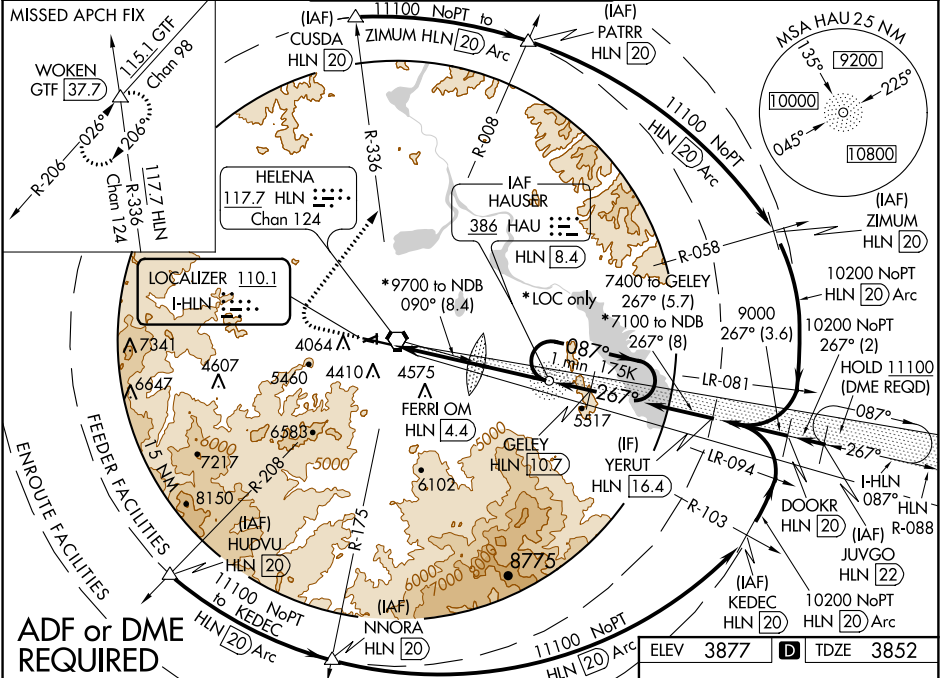
HELENA RGNL (HLN)

**⚠** Inoperative table does not apply to S-LOC 27 Cat C/D/E. For inoperative MALS/R, increase S-ILS 27 Cat E visibility to 3/4 mile, increase FERRI fix minimums: S-LOC 27 Cat C/D/E visibility to 1 1/8 miles. Missed approach requires a minimum climb of 300 ft per NM to 6000, if unable to meet climb gradient, see ILS or LOC Y RWY 27. Circling NA south of Rwy 9-27 for Cats D and E. Night Landing: Rwy 5, 23, 35 NA. DME from HLN VORTAC, simultaneous reception of I-ILN and HLN DME required. Holding at HAU NDB authorized for Cat A and B aircraft only.

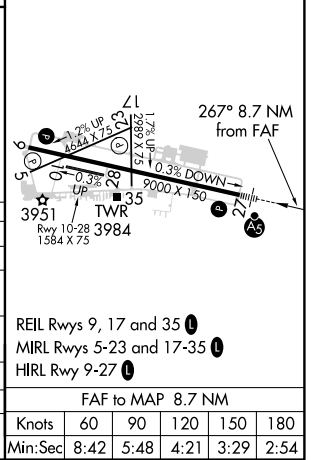
**MALSR** 

**MISSED APPROACH:** Climb to 4600 then climbing right turn to 9000 on heading 021° and HLN VORTAC R-336 to WOKEN/GTF 37.7 DME and hold.

ATIS <b>120.4</b>	HELENA APP CON ★ <b>119.5 229.4</b>	HELENA TOWER ★ <b>118.3 (CTAF) 0 257.8</b>	GND CON <b>121.9</b>	UNICOM <b>122.95</b>
----------------------	--	---	-------------------------	-------------------------



4600	9000	WOKEN	HAU	GELEY	YERUT
↑	hdg 021°	HLN R-336	NDB	HLN 10.7	HLN 16.4
*LOC only	FERRI OM	7400	7400	9000	
	HLN 4.4	5428	*7100	7400	GS 3.00° TCH 55
		4.7 NM	4 NM	2.3 NM	5.7 NM
CATEGORY	A	B	C	D	E
S-ILS 27	4052-1/2		200 (200-1/2)		
S-LOC 27	5620-3/4 1768 (1800-3/4)	5620-1 1768 (1800-1)	5620-3	1768 (1800-3)	
CIRCLING	5620-1 1/4 1743 (1800-1 1/4)	5620-1 1/2 1743 (1800-1 1/2)	5920-3	2043 (2100-3)	
FERRI FIX MINIMUMS*					
S-LOC 27	4520-1/2	668 (700-1/2)	4520-1 1/2	668 (700-1 1/2)	
CIRCLING	4640-1 763 (800-1)	4800-1 1/4 923 (1000-1 1/4)	5920-3	2043 (2100-3)	



REIL Rws 9, 17 and 35 **⓪**  
MIRL Rws 5-23 and 17-35 **⓪**  
HIRL Rwy 9-27 **⓪**

FAF to MAP 8.7 NM

Knots	60	90	120	150	180
Min:Sec	8:42	5:48	4:21	3:29	2:54

NW-1, 18 JUN 2020 to 16 JUL 2020

NW-1, 18 JUN 2020 to 16 JUL 2020