


LOC I-HLN	APP CRS	Rwy Idg	9000
110.1	267°	TDZE	3852
		Apt Elev	3877

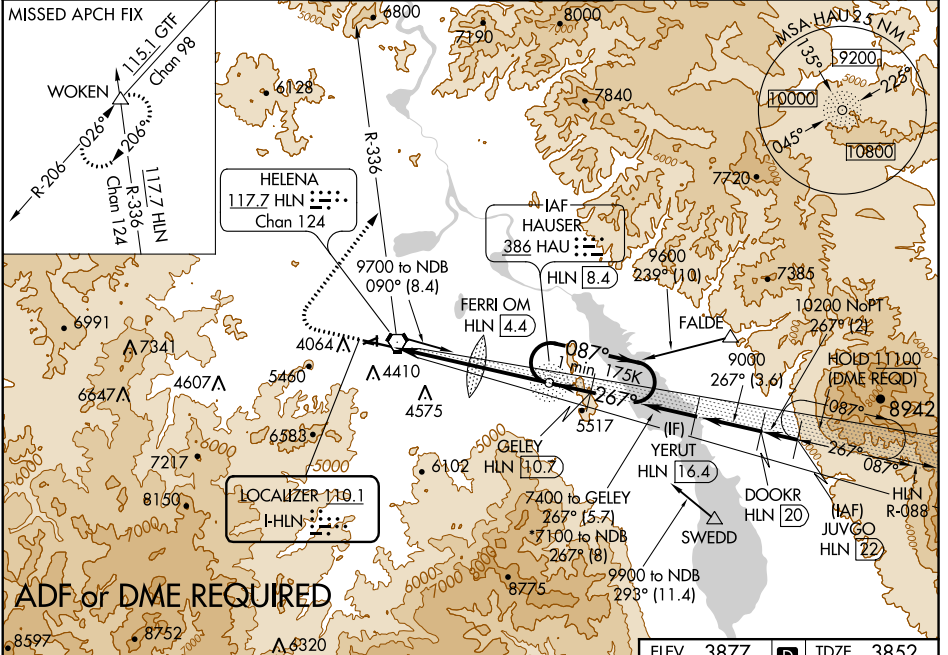
ILS or LOC Y RWY 27

HELENA RGNL (HLN)

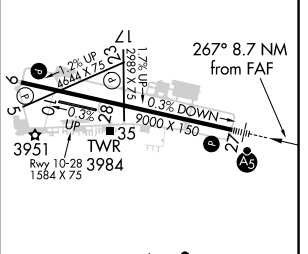
Inoperative table does not apply to S-LOC 27 all Cats. For inoperative MALSR, increase S-ILS 27 all Cats visibility to 1 1/8 miles, FERRI FIX minimums: S-LOC 27 Cat C, D and E visibility to 2 miles. Holding at HAU NDB authorized for Category A and B aircraft only. Circling NA south of Rwy 9-27 for Cats D and E. Circling to Rwy 5, 23, 35 NA at night. DME from HLN VORTAC, simultaneous reception of I-HLN and HLN DME required.

MALSR

MISSED APPROACH: Climb to 4700 then climbing right turn to 9000 via heading 021° and HLN VORTAC R-336 to WOKEN INT and hold, continue climb-in-hold to 9000.

ATIS	HELENA APP CON *	HELENA TOWER *	GND CON	UNICOM
120.4	119.5 229.4	118.3 (CTAF) 257.8	121.9	122.95



CATEGORY	A	B	C	D	E
S-ILS 27	4409-1 3/8 557 (600-1 1/8)				
S-LOC 27	5620-1 1/4 1768 (1800-1 1/4)	5620-1 1/2 1768 (1800-1 1/2)	5620-3	1768	1800-3
CIRCLING	5620-1 1/4 1743 (1800-1 1/4)	5620-1 1/2 1743 (1800-1 1/2)	5620-3	1743	1800-3
FERRI FIX MINIMUMS*					
S-LOC 27	4580-1/2	728 (800-1/2)	4580-1 1/8	728	800-1 1/8
CIRCLING	4640-1	763 (800-1)	4740-2 1/2 863 (900-2 1/2)	4740-2 3/4 863 (900-2 3/4)	4940-3 1063 (1100-3)



NW-1, 18 JUN 2020 to 16 JUL 2020

NW-1, 18 JUN 2020 to 16 JUL 2020