

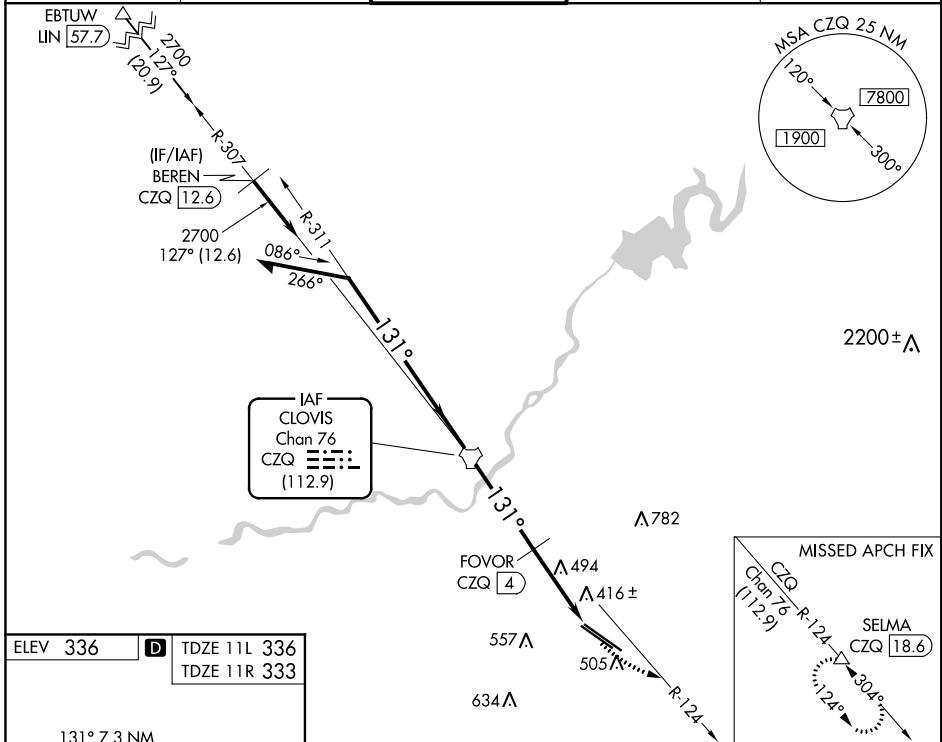
TACAN CZQ Chan 76 (112.9)	APP CRS 131°	Rwy Idg TDZE Apt Elev	11L 9279 336 336	11R 8008 333 336
---	------------------------	-----------------------------	--	--

TACAN RWY 11L

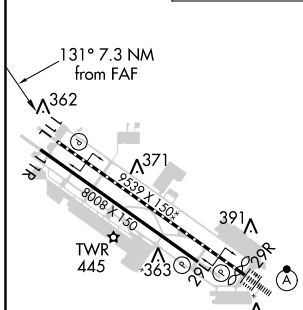
FRESNO YOSEMITE INTL (FAT)

DME required.		MISSED APPROACH: Climbing left turn to 2000 on CZQ TACAN R-124 to SELMA/CZQ 18.6 DME and hold.		
▼ ▲ Rwy 11L helicopter visibility reduction below ¾ SM NA.				

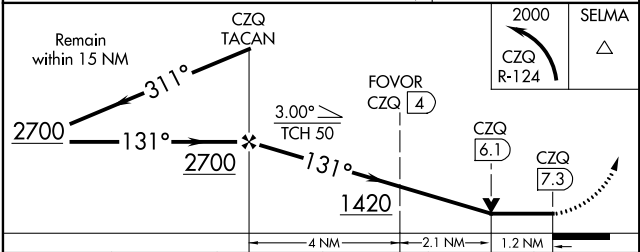
ATIS 121.35 273.6	FRESNO APP CON 119.6 351.95	FRESNO TOWER 118.2 251.1	GND CON 121.7 348.6	CLNC DEL 124.35 348.6
-----------------------------	---------------------------------------	------------------------------------	-------------------------------	---------------------------------



ELEV 336	D TDZE 11L 336	TDZE 11R 333
----------	----------------	--------------



REIL Rws 11L and 11R	HIRL Rwy 11L-29R	MIRL Rwy 11R-29L	TDZ/CL Rwy 29R
----------------------	------------------	------------------	----------------



CATEGORY	A	B	C	D	E
S-11L	760/55	424 (500-1)	760-1¼	424 (500-1¼)	
SIDESTEP 11R	760-1	427 (500-1)	760-1½ 427 (500-1½)	760-2	427 (500-2)
CIRCLING	820-1	484 (500-1)	920-1½ 584 (600-1½)	920-2 584 (600-2)	1140-2¾ 804 (900-2¾)

SW-2, 18 JUN 2020 to 16 JUL 2020

SW-2, 18 JUN 2020 to 16 JUL 2020