

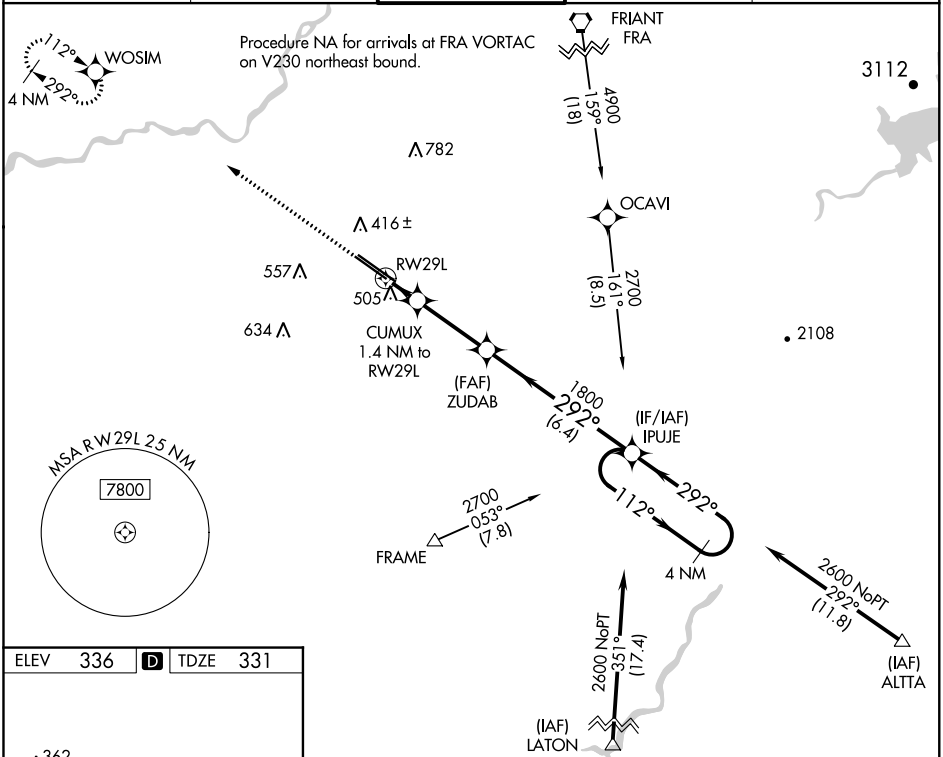
WAAS CH 50530 W29B	APP CRS 292°	Rwy Idg TDZE Apt Elev	8008 331 336
--	------------------------	-----------------------------	---

RNAV (GPS) RWY 29L

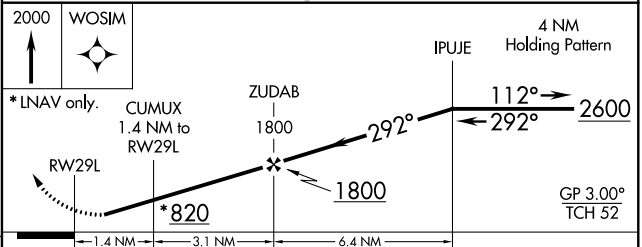
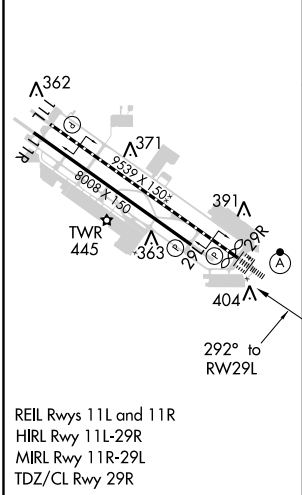
FRESNO YOSEMITE INTL (FAT)

▼ For uncompensated Baro-VNAV systems, LNAV/VNAV NA below 0°C (32°F) or above 54°C (130°F). DME/DME RNP-0.3 NA. Helicopter visibility reduction below ¾ SM NA. MISSED APPROACH: Climb to 2000 direct WOSIM and hold.

ATIS 121.35 273.6	FRESNO APP CON 119.6 351.95	FRESNO TOWER 118.2 251.1	GND CON 121.7 348.6	CLNC DEL 124.35 348.6
-----------------------------	---------------------------------------	------------------------------------	-------------------------------	---------------------------------



ELEV 336	D	TDZE 331
----------	----------	----------



CATEGORY	A	B	C	D
LPV DA		581-¾	250 (300-¾)	
LNAV/VNAV DA		667-1½	336 (400-1½)	
LNAV MDA	760-1	429 (500-1)	760-1¼	429 (500-1¼)
C CIRCLING	820-1	484 (500-1)	920-1½ 584 (600-1½)	920-2 584 (600-2)

SW-2, 18 JUN 2020 to 16 JUL 2020

SW-2, 18 JUN 2020 to 16 JUL 2020