

FRESNO, CALIFORNIA

# HI-ILS Z or LOC Z RWY 29R

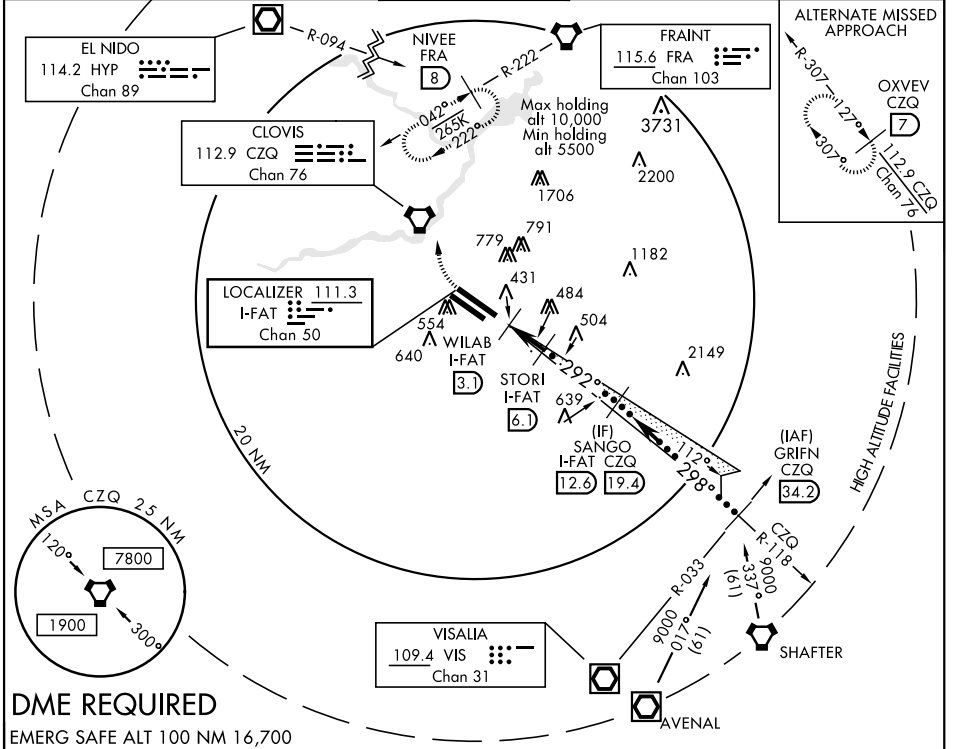
LOC/DME I-FAT <b>111.3</b> Chan <b>50</b>	APCH CRS <b>292°</b>	Rwy ldg 29R <b>9227</b> TDZE 29R <b>333</b> Arpt Elev <b>336</b>	29L <b>8008</b> 29L <b>331</b>
---	-------------------------	--	-----------------------------------

JAL-162 [USAF] FRESNO YOSEMITE INTL (KFAT)

\* When ALS inop, incr CAT CDE RVR to 40 and vis to 3/4 mile.  
 \*\* When ALS inop, incr CAT CDE RVR to 55 and vis to 1 mile.

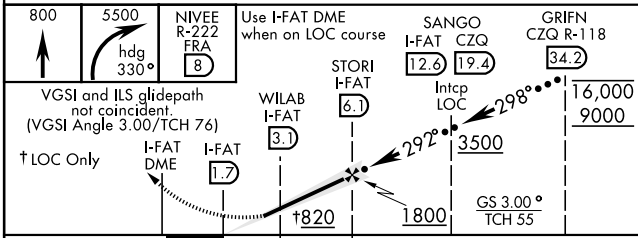
MISSED APPROACH: Climb to 800, then climbing right turn to 5500 on heading 330° and FRA VORTAC R-222 to NIVEE int (FRA 8 DME) and hold, continue climb-in-hold to 5500.

ATIS <b>121.35 273.6</b>	FRESNO APP CON <b>132.35 323.25</b>	FRESNO TOWER <b>118.2 251.1</b>	GND CON <b>121.7 348.6</b>	CLNC DEL <b>124.35 348.6</b>
-----------------------------	--	------------------------------------	-------------------------------	---------------------------------

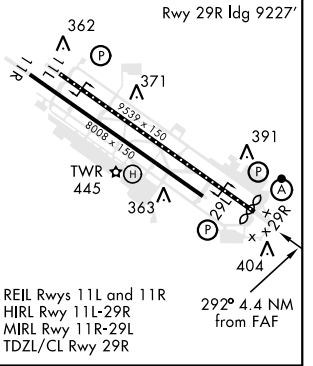


## DME REQUIRED

EMERG SAFE ALT 100 NM 16,700



ELEV 336	TDZE 29R 333
	TDZE 29L 331



CATEGORY	C	D	E
S-ILS 29R*	533/18	200	(200-1/2)
S-LOC 29R**	700/35	367	(400-3/4)
SIDE STEP RWY 29L	700-1 1/2 369 (400-1 1/2)	700-2	369 (400-2)
CIRCLING	920-1 1/2 584 (600-1 1/2)	920-2 584 (600-2)	1140-2 3/4 804 (900-2 3/4)

REIL Rwy 11L and 11R  
 HIRL Rwy 11L-29R  
 MIRL Rwy 11R-29L  
 TDZL/CL Rwy 29R

FRESNO, CALIFORNIA

36°47'N-119°43'W

FRESNO YOSEMITE INTL (KFAT)

Amtd 4 10OCT19

# HI-ILS Z or LOC Z RWY 29R

SW-2, 18 JUN 2020 to 16 JUL 2020

SW-2, 18 JUN 2020 to 16 JUL 2020