

WAAS CH 49242	APP CRS 111°	Rwy Idg TDZE Apt Elev	3212 280 280
W12A			

RNAV (GPS) RWY 12

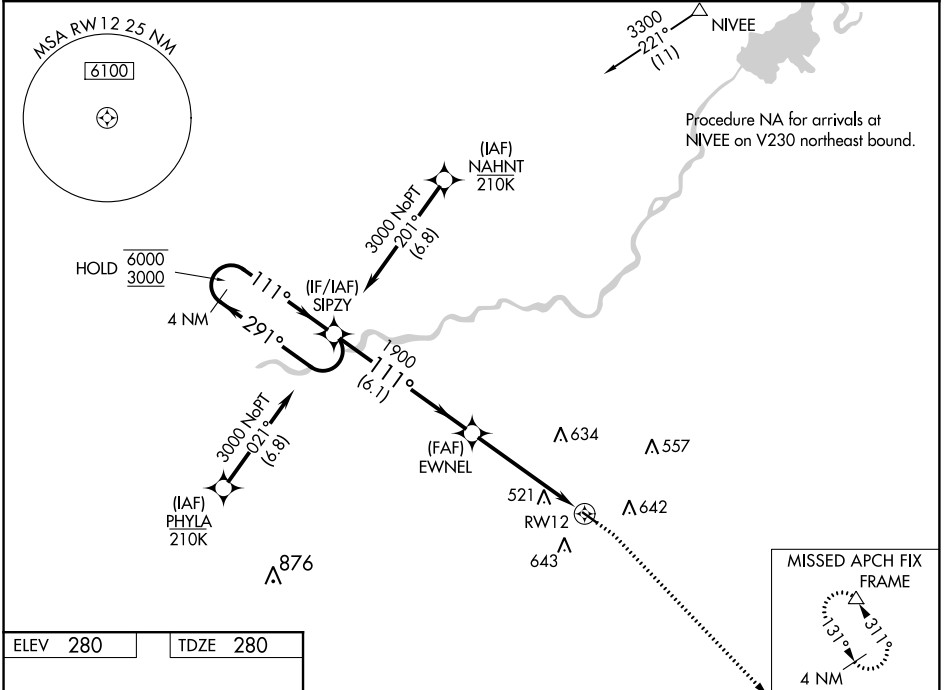
FRESNO CHANDLER EXECUTIVE (FCH)

RNP APCH.

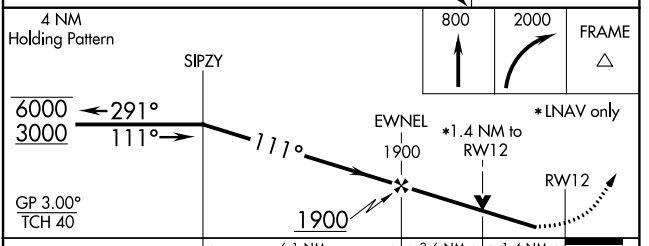
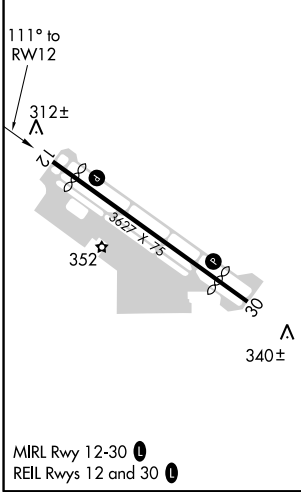
▼ For uncompensated Baro-VNAV systems, LNAV/VNAV NA below -1° C or above 54°C.
 ▲ Rwy 12 helicopter visibility reduction below 3/4 SM NA.
 Circling Rwy 30 NA at night.

MISSED APPROACH: Climb to 800 then climbing right turn to 2000 direct FRAME and hold.

AWOS-3 135.225	FRESNO APP CON 119.0 323.25	CLNC DEL 119.0	UNICOM 123.0 (CTAF) 0
--------------------------	---------------------------------------	--------------------------	---------------------------------



ELEV 280	TDZE 280
----------	----------



CATEGORY	A	B	C	D
LPV DA	530-3/4		250 (300-3/4)	NA
LNAV/VNAV DA	809-1 1/2		529 (600-1 1/2)	NA
LNAV MDA	780-1	500 (500-1)	780-1 3/8 500 (500-1 3/8)	NA
C CIRCLING	960-1	680 (700-1)	960-2 680 (700-2)	NA

SW-2, 18 JUN 2020 to 16 JUL 2020

SW-2, 18 JUN 2020 to 16 JUL 2020