

VORTAC CEC 109.0 Chan 27	APP CRS 346°	Rwy Idg 5000 TDZE 59 Apt Elev 61
---------------------------------------	------------------------	---

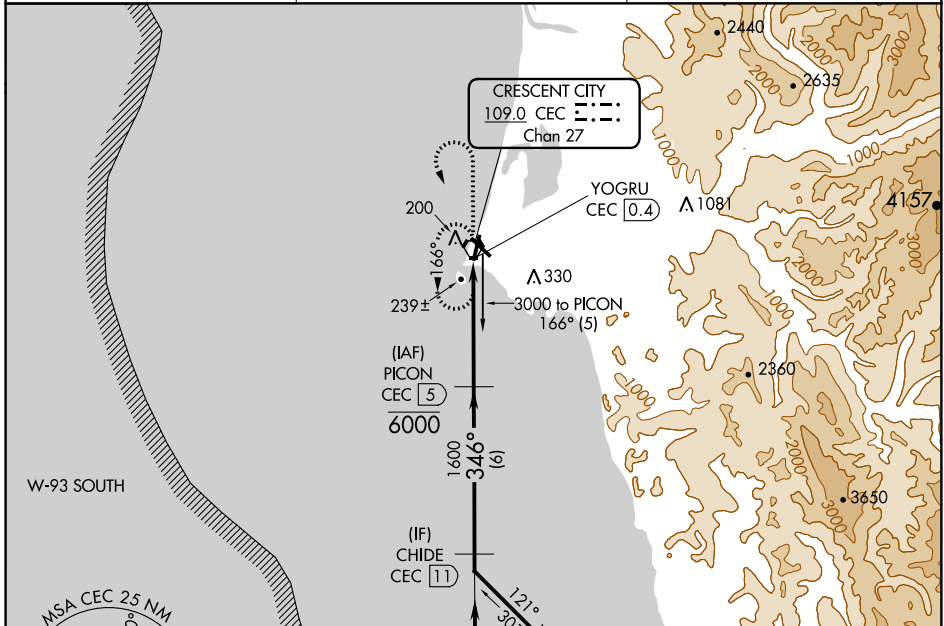
VOR/DME RWY 36

JACK MC NAMARA FIELD (CEC)

⚠ When local altimeter setting not received, use Brookings altimeter setting and increase all MDA 100 feet; increase S-36 Cat C/D and Circling Cat D visibilities 1/4 mile and Circling Cat C visibility 1/2 mile. Helicopter visibility reduction below 1 SM NA. Night landing: Rwy 36 operational VGSJ required, remain on or above VGSJ glidepath until threshold. Night landing: Rwy 18, 30 NA.

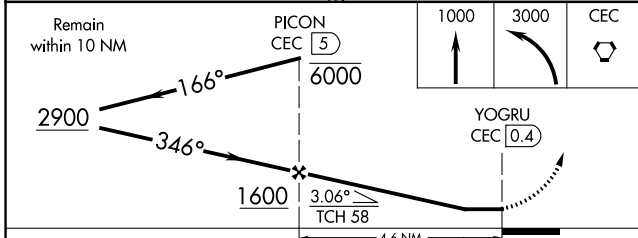
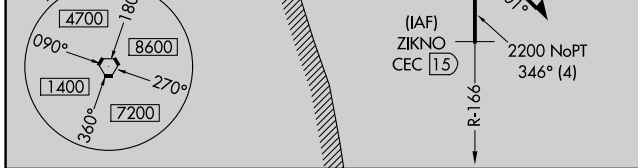
MISSED APPROACH: Climb to 1000 then climbing left turn to 3000 direct CEC VORTAC and hold, continue climb-in-hold to 3000.

ASOS 119.925	SEATTLE CENTER 124.85 306.3	UNICOM 122.8 (CTAF) 0
------------------------	---------------------------------------	---------------------------------

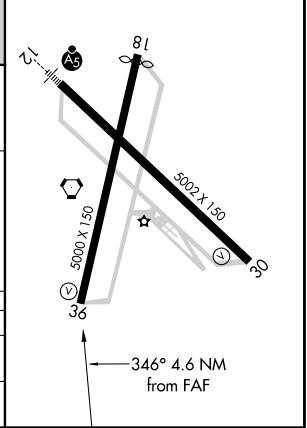


SW-2, 18 JUN 2020 to 16 JUL 2020

SW-2, 18 JUN 2020 to 16 JUL 2020



ELEV 61	TDZE 59
HIRL Rwy 12-30 0	
REIL Rwys 18, 30 and 36 0	
MIRL Rwy 18-36 0	



CATEGORY	A	B	C	D
S-36	500-1	441 (500-1)	500-1 3/8	441 (500-1 3/8)
C CIRCLING	540-1	479 (500-1)	640-1 1/2 579 (600-1 1/2)	640-2 579 (600-2)