


VORTAC CEC 109.0 Chan 27	APP CRS 131°	Rwy Idg 5002 TDZE 60 Apt Elev 61
---------------------------------------	------------------------	---

VOR/DME RWY 12

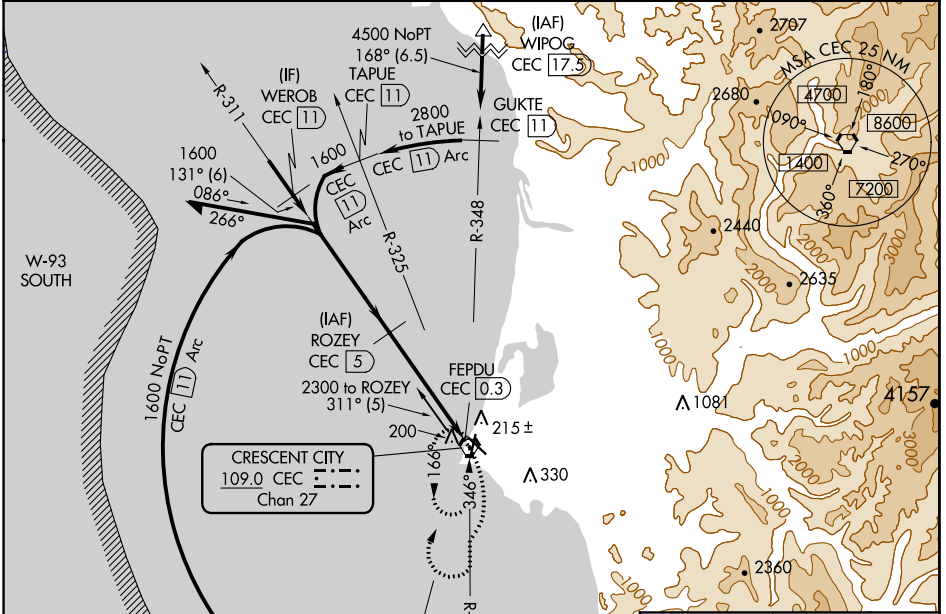
JACK MC NAMARA FIELD (CEC)

▼ VDP NA with Brookings altimeter setting. When local altimeter setting not received, use Brookings altimeter setting and increase all MDA 100 feet; increase S-12 Cat C/D, and Circling Cat D visibility 1/2 mile, and Circling Cat C visibility 1/2 mile. For inop MALSR, increase S-12 Cats A/B visibility to 1 mile, Cats C/D visibility to 1 1/2 mile. For inop MALSR when using Brookings altimeter setting, increase S-12 Cats A/B visibility to 1 mile, Cats C/D visibility to 1 1/2 mile. Night Landing: Rwy 18, 30 NA. Night Landing: Rwy 36 operational VGSJ required, remain on or above VGSJ glidepath until threshold.

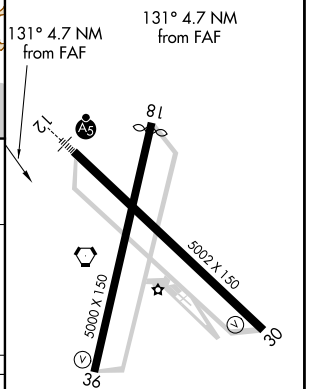
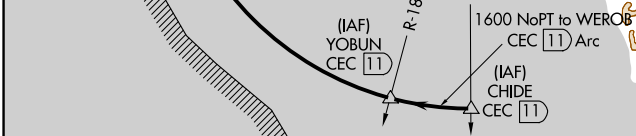
MALSRS 

MISSED APPROACH: Climbing right turn to 3000 on CEC VORTAC R-166 then right turn direct CEC VORTAC and hold.


ASOS 119.925	SEATTLE CENTER 124.85 306.3	UNICOM 122.8 (CTAF) 
------------------------	---------------------------------------	---






ELEV 61	TDZE 60
---------	---------



Remain within 10 NM	ROZEY CEC 5	3000	CEC
1600	131°	1600	CEC 1.4
2.98° TCH 50	3.6 NM	1.2 NM	FEPDU CEC 0.3

CATEGORY	A	B	C	D
S-12	480-3/4	420 (500-3/4)	480-1	420 (500-1)
 CIRCLING	540-1	479 (500-1)	640-1 1/2 579 (600-1 1/2)	640-2 579 (600-2)

HIRL Rwy 12-30 
 REIL Rws 18, 30 and 36 
 MIRL Rwy 18-36 

SW-2, 18 JUN 2020 to 16 JUL 2020

SW-2, 18 JUN 2020 to 16 JUL 2020