


LOC I-BGM <b>110.3</b>	APP CRS <b>340°</b>	Rwy Idg TDZE Apt Elev	<b>7100</b> <b>1600</b> <b>1636</b>
---------------------------	------------------------	-----------------------------	---

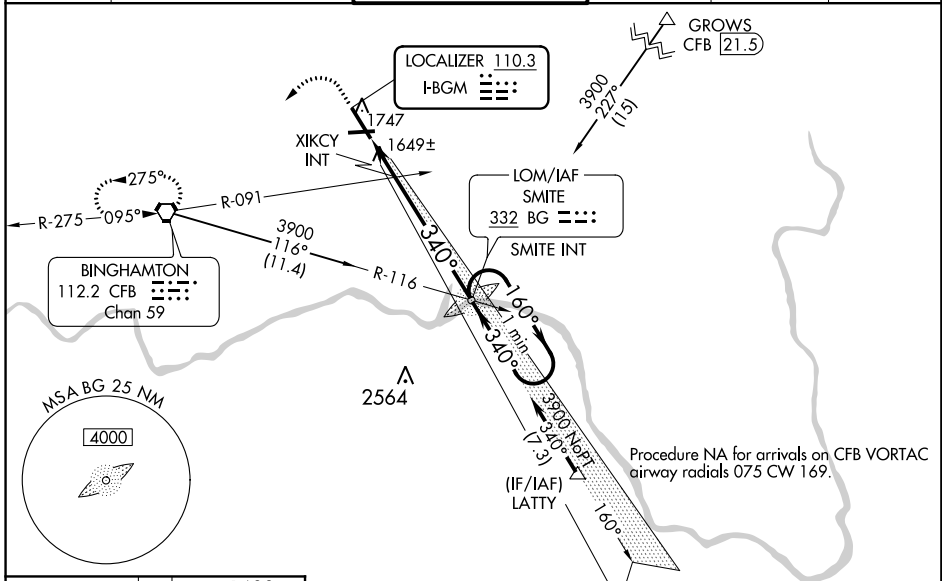
# ILS or LOC RWY 34

GREATER BINGHAMTON/EDWIN A. LINK FIELD (BGM)

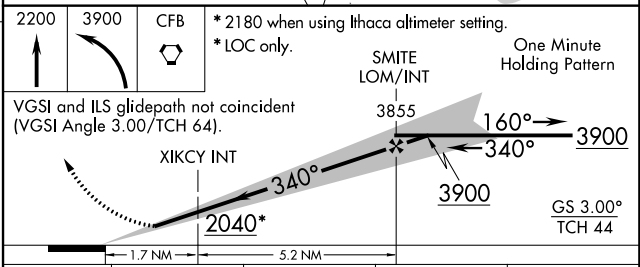
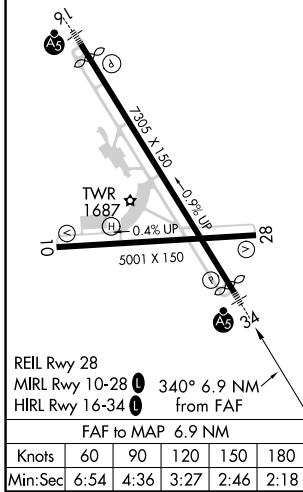
**⚠** When local altimeter setting not received, use Ithaca altimeter setting; increase S-ILS 34 DA to 1938 and all Cats visibility 1/4 SM; increase all MDA 140 feet and S-LOC 34 Cats C/D visibility 1/2 SM and Circling Cat C visibility 1/4 SM and Cat D visibility 1/2 SM; increase XIKCY fix minimums S-LOC 34 Cats C/D visibility 1/4 SM. For inoperative ALS increase S-LOC 34 Cats C/D visibility to 1 1/2 SM and XIKCY fix minimums S-LOC 34 Cats C/D visibility to RVR 5000. For inoperative ALS when using Ithaca altimeter setting, increase S-ILS 34 all Cats visibility to RVR 6000, S-LOC 34 Cats C/D visibility to 1 1/4 SM, and XIKCY fix minimums S-LOC 34 Cats C/D visibility to 1 1/2 SM.

**MALSRL**  
  
**MISSED APPROACH:**  
 Climb to 2200 then climbing left turn to 3900 direct CFB VORTAC and hold, continue climb-in-hold to 3900.

ATIS <b>128.15</b>	BINGHAMTON APP CON * <b>118.6 257.625</b>	BINGHAMTON TOWER * <b>119.3 (CTAF) 0 239.25</b>	GND CON <b>121.9</b>	CLNC DEL <b>125.05</b>	UNICOM <b>122.95</b>
-----------------------	--	--	-------------------------	---------------------------	-------------------------



ELEV 1636	<b>D</b>	TDZE 1600
-----------	----------	-----------



CATEGORY	A	B	C	D
S-ILS 34	1800/24 200 (200-1/2)			
S-LOC 34	2040/24	440 (500-1/2)	2040/50	440 (500-1)
<b>C</b> CIRCLING	2120-1	484 (500-1)	2120-1 1/2 484 (500-1 1/2)	2200-2 564 (600-2)
XIKCY FIX MINIMUMS				
S-LOC 34	1940/24	340 (400-1/2)	1940/35	340 (400-1/2)
<b>C</b> CIRCLING	2120-1	484 (500-1)	2120-1 1/2 484 (500-1 1/2)	2200-2 564 (600-2)

BINGHAMTON, NEW YORK  
Amdt 4A 21JUN18

GREATER BINGHAMTON/EDWIN A. LINK FIELD (BGM)  
42°13'N-75°59'W  
**ILS or LOC RWY 34**

NE-2, 18 JUN 2020 to 16 JUL 2020

NE-2, 18 JUN 2020 to 16 JUL 2020