

WAAS CH <b>93518</b> <b>W16A</b>	APP CRS <b>164°</b>	Rwy Idg TDZE Apt Elev	<b>5089</b> <b>2433</b> <b>2437</b>
--	------------------------	-----------------------------	---

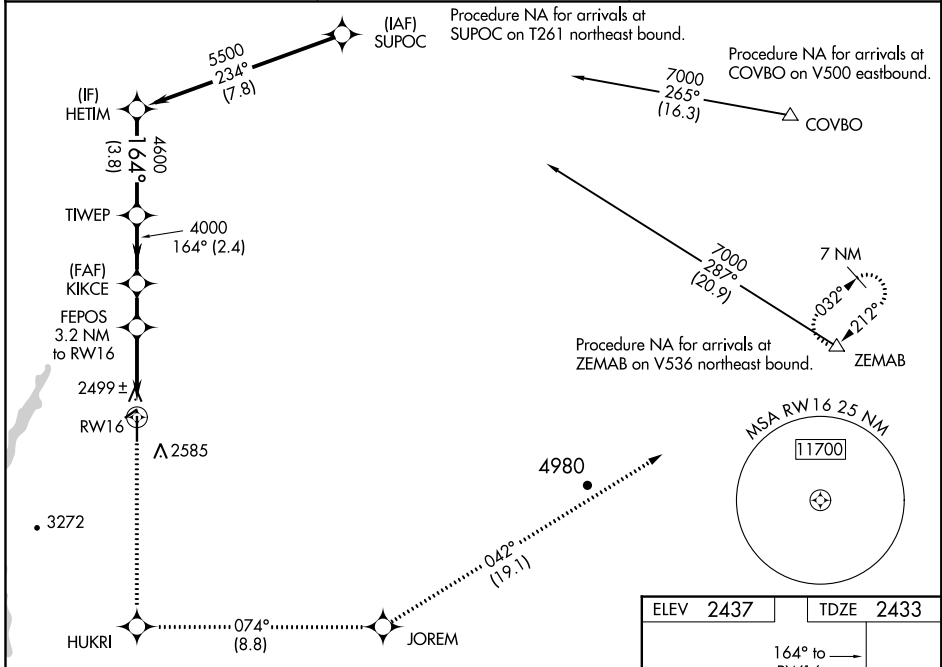
# RNAV (GPS) RWY 16

MADRAS MUNI (S33)

**Baro-VNAV NA** when using Redmond altimeter setting. For uncompensated Baro-VNAV systems, LNAV/VNAV NA below -19°C (-2°F) or above 54°C (130°F). Rwy 16 helicopter visibility reduction below 3/4 SM NA. DME/DME RNP-0.3 NA. When local altimeter setting not received, use Redmond altimeter setting and increase all DA and MDA 580 feet; increase LPV all Cats visibility 2 3/8 SM, LNAV/VNAV all Cats visibility 2 3/8 SM, LNAV and Circling Cat A visibility 1/4 SM, LNAV and Circling Cat B visibility 1/2 SM, and increase LNAV and Circling Cat C visibility 1 1/4 SM.

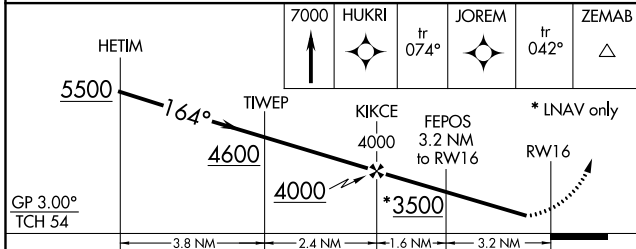
**MISSED APPROACH:** Climb to 7000 direct HUKRI and on track 074° to JOREM and on track 042° to ZEMAB and hold.

AWOS-3PT <b>132.425</b>	SEATTLE CENTER <b>126.15 269.475</b>	UNICOM <b>122.8 (CTAF)</b>
----------------------------	---	-------------------------------



NW-1, 21 MAY 2020 to 18 JUN 2020

NW-1, 21 MAY 2020 to 18 JUN 2020



ELEV 2437	TDZE 2433
-----------	-----------

Plan view diagram of the runway and taxiway layout, showing RWY 16, RWY 34, and taxiway dimensions.

REIL Rwy 34 **1**  
MIRL Rwy 16-34 **1**

CATEGORY	A	B	C	D
LPV DA	2783-1 1/8	350 (400-1 1/8)		NA
LNAV/VNAV DA	2843-1 3/8	410 (500-1 3/8)		NA
LNAV MDA	3040-1	607 (700-1)	3040-1 3/4 607 (700-1 3/4)	NA
CIRCLING	3040-1	603 (700-1)	3040-1 3/4 603 (700-1 3/4)	NA