

WAAS CH <b>90116</b> <b>W01A</b>	APP CRS <b>013°</b>	Rwy Idg TDZE Apt Elev	<b>6000</b> <b>467</b> <b>488</b>
--	------------------------	-----------------------------	---

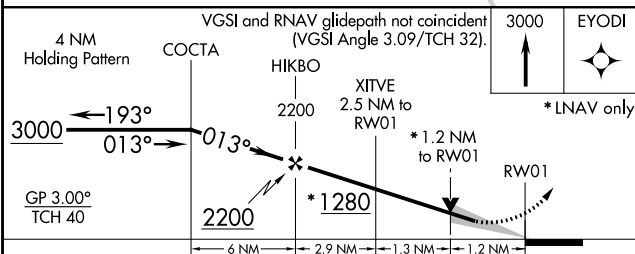
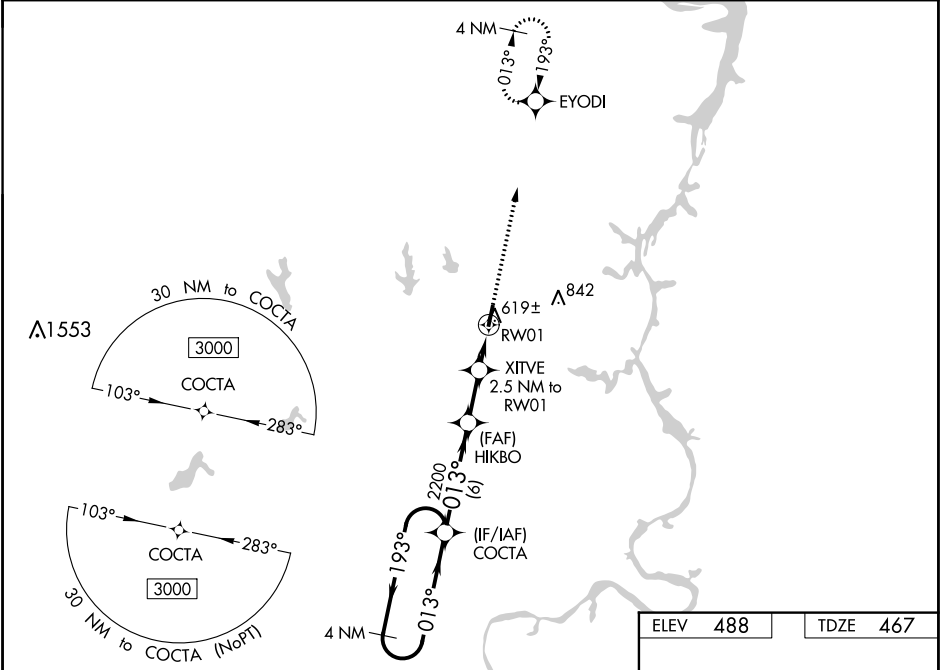
# RNAV (GPS) RWY 1

BEECH RIVER RGNL (PVE)

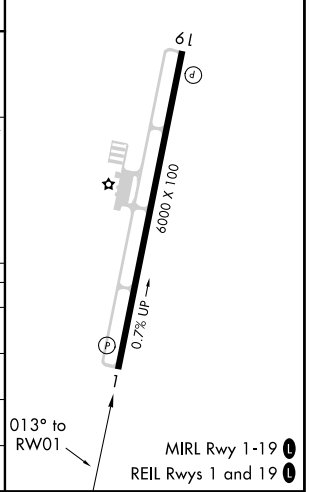
**⚠** For uncompensated Baro-VNAV systems, LNAV/VNAV NA below -15°C (5°F) or above 54°C (130°F).  
**⚠** DME/DMÉ RNP-0.3 NA. When local altimeter setting not received, use Jackson altimeter setting; increase LPV all Cats DA to 807 and all Cats visibility  $\frac{3}{8}$  mile; increase LNAV/VNAV all Cats DA to 911 and all Cats visibility  $\frac{3}{8}$  mile; increase all MDA 100 feet and LNAV Cats C/D and Circling Cat C visibility  $\frac{1}{4}$  mile and Circling Cat D visibility  $\frac{1}{2}$  mile. Baro-VNAV and VDP NA when using Jackson altimeter setting.

**MISSED APPROACH:**  
Climb to 3000 direct EYODI and hold.

AWOS-3 <b>118,125</b>	MEMPHIS CENTER <b>125.85 379.25</b>	UNICOM <b>123.0</b> (CTAF)
--------------------------	--	-------------------------------



ELEV 488	TDZE 467
----------	----------



CATEGORY	A	B	C	D
LPV DA		717- $\frac{7}{8}$	250 (300- $\frac{7}{8}$ )	
LNAV/VNAV DA		821-1 $\frac{1}{4}$	354 (400-1 $\frac{1}{4}$ )	
LNAV MDA	880-1	413 (400-1)	880-1 $\frac{1}{8}$	413 (400-1 $\frac{1}{8}$ )
<b>C</b> CIRCLING	940-1 452 (500-1)	980-1 492 (500-1)	1000-1 $\frac{1}{2}$ 512 (600-1 $\frac{1}{2}$ )	1200-2 $\frac{1}{4}$ 712 (800-2 $\frac{1}{4}$ )

SE-1, 21 MAY 2020 to 18 JUN 2020

SE-1, 21 MAY 2020 to 18 JUN 2020