

APP CRS	Rwy Idg	3242
178°	TDZE	27
	Apt Elev	27

RNAV (GPS) RWY 18

EEK (EEK) (PAEE)

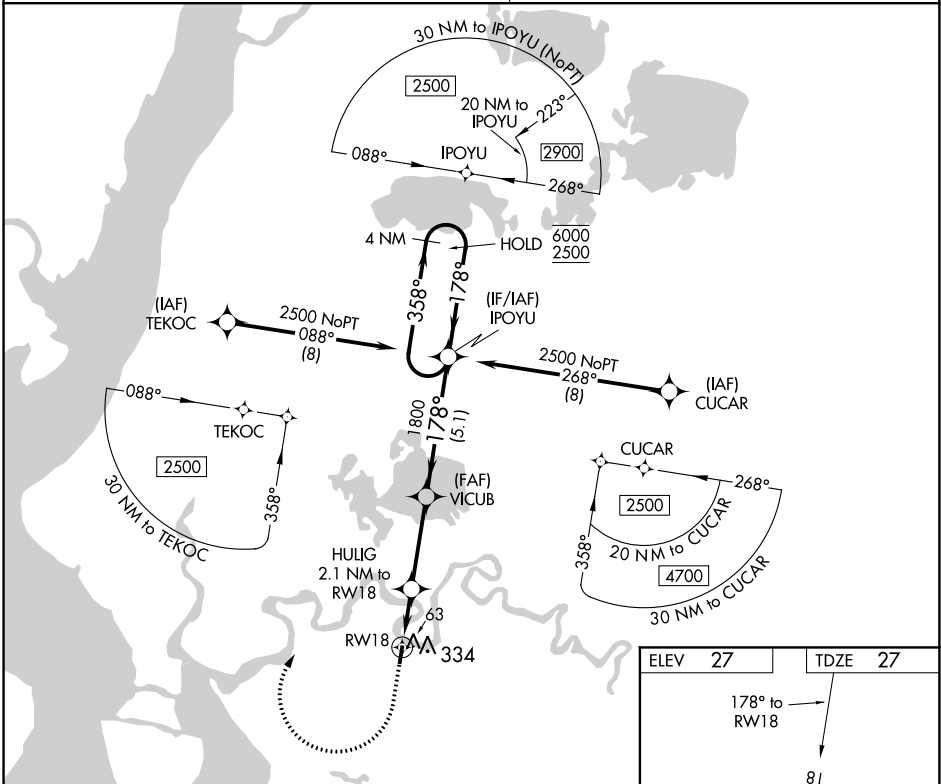
RNP APCH.

Use Bethel altimeter setting, when not received procedure NA.

MISSED APPROACH: Climb to 600 then climbing right turn to 2500 direct IPOYU and hold.

ANCHORAGE CENTER
125.2 372.0

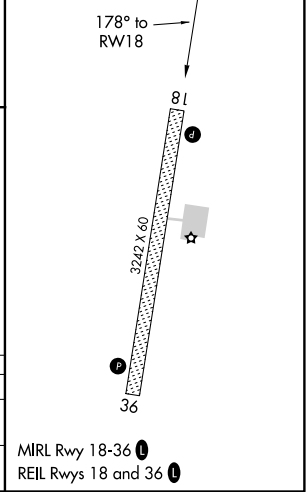
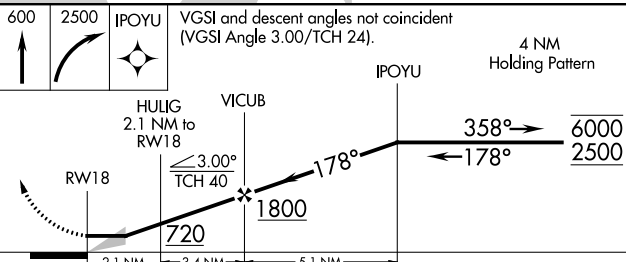
CTAF
122.8



AK, 21 MAY 2020 to 16 JUL 2020

AK, 21 MAY 2020 to 16 JUL 2020

ELEV	27	TDZE	27
------	-----------	------	-----------



CATEGORY	A	B	C	D
LNVA MDA	420-1 393 (400-1)		NA	
CIRCLING	740-1 713 (800-1)		NA	

MIRL Rwy 18-36
REIL Rwy 18 and 36