

MAGEE, MISSISSIPPI

AL-9829 (FAA)

19283

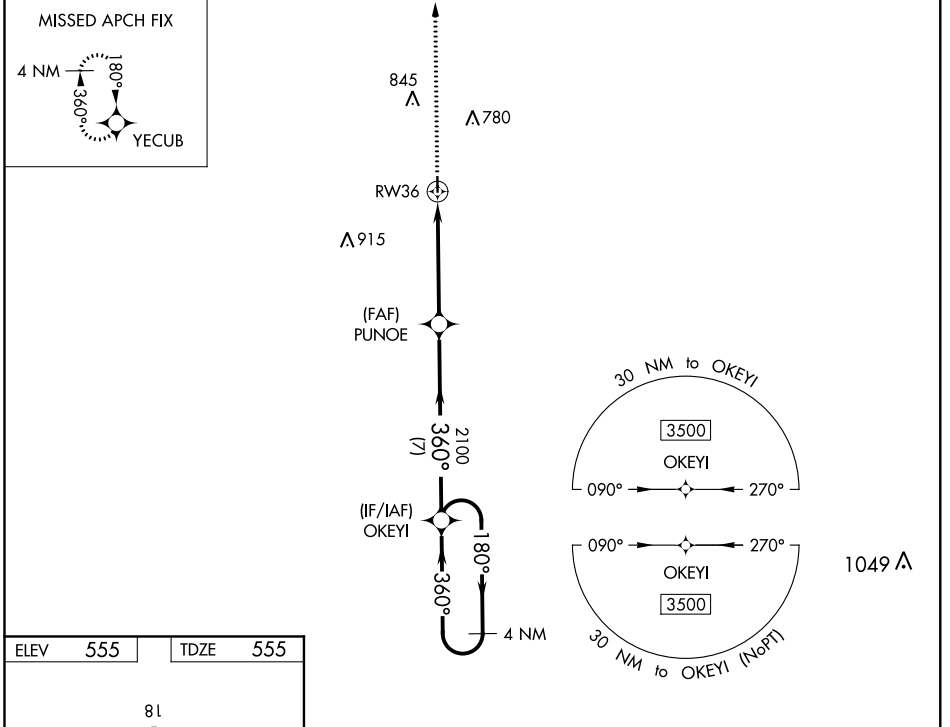
WAAS CH <b>69235</b> <b>W36A</b>	APP CRS <b>360°</b>	Rwy Idg <b>3108</b> TDZE <b>555</b> Apt Elev <b>555</b>
--	------------------------	---

# RNAV (GPS) RWY 36

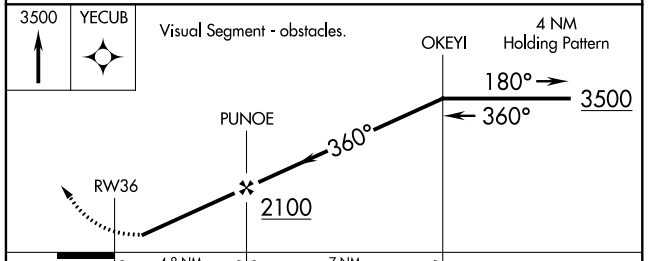
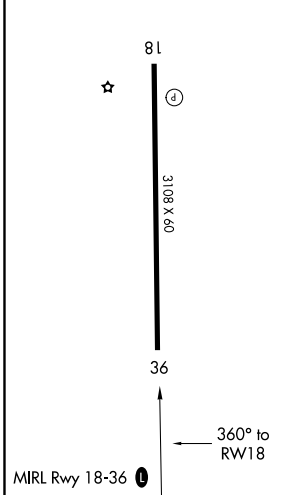
MAGEE MUNI (17M)

**▽** Use Brookhaven altimeter setting; when not received, use Jackson-Medgar Wiley Evers Intl altimeter setting. DME/DME RNP-0.3 NA. Procedure NA at night.  
**▲ NA** MISSED APPROACH: Climb to 3500 direct YECUB and hold.

1R7 AWOS-3P <b>118.125</b>	JAN ASOS <b>121.05</b>	MEMPHIS CENTER <b>125.975 307.275</b>	UNICOM <b>122.8 (CTAF) 0</b>
-------------------------------	---------------------------	--	---------------------------------



ELEV 555	TDZE 555
----------	----------



CATEGORY	A	B	C	D
LP MDA	1100-1	545 (600-1)	1100-1½ 545 (600-1½)	NA
LNAV MDA	1120-1	565 (600-1)	1120-1½ 565 (600-1½)	NA
<b>C</b> CIRCLING	1120-1 565 (600-1)	1160-1 605 (700-1)	1260-2 705 (800-2)	NA

MAGEE, MISSISSIPPI  
Orig-A 25MAY17

31°52'N-89°48'W

# RNAV (GPS) RWY 36

MAGEE MUNI (17M)

SC-4, 21 MAY 2020 to 18 JUN 2020