

WAAS CH <b>48937</b> W31A	APP CRS <b>304°</b>	Rwy Idg 3300 TDZE 992 Apt Elev 993
---------------------------------	------------------------	---

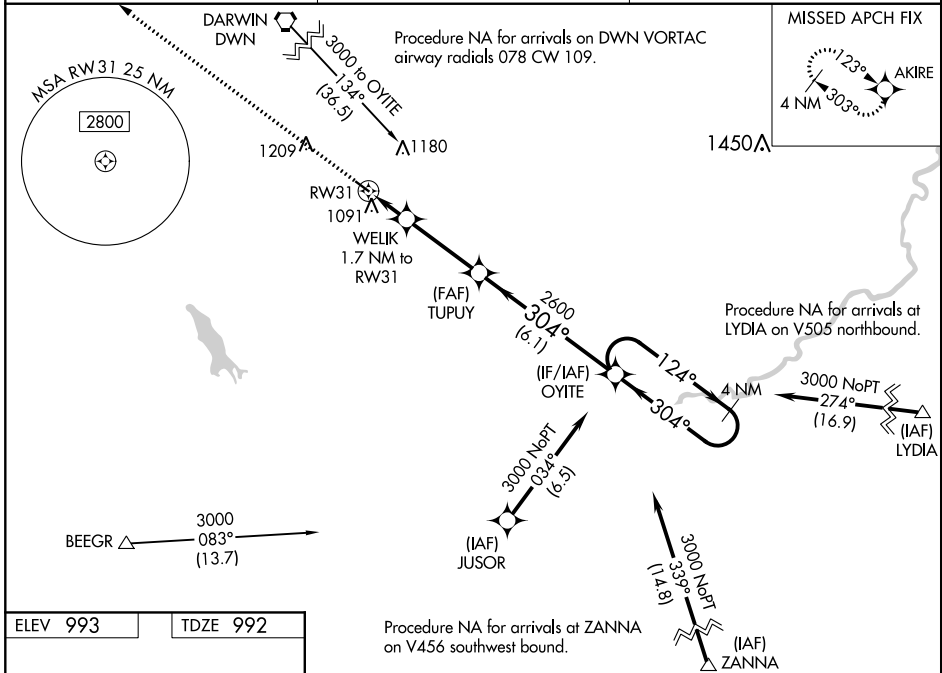
# RNAV (GPS) RWY 31

GLENCOE MUNI (GYL)

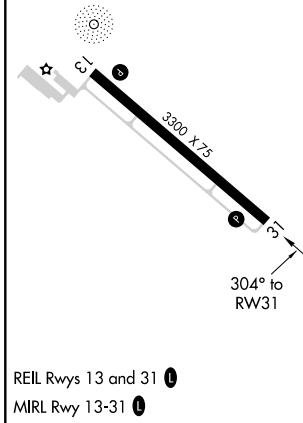
**⚠** Baro-VNAV NA when using Hutchinson altimeter setting. For uncompensated Baro-VNAV systems, LNAV/VNAV NA below -16°C (4°F) or above 54°C (130°F). DME DME/RNP-0.3 NA. VDP NA with Hutchinson altimeter setting. When local altimeter setting not received, use Hutchinson altimeter setting and increase all DA 43 feet and all MDA 60 feet, increase LPV and LNAV/VNAV Cat A/B visibility 1/8 mile.

**⚠** MISSED APPROACH: Climb to 3000 direct AKIRE and hold.

AWOS-3 <b>119.625</b>	MINNEAPOLIS APP CON <b>134.7 284.7</b>	UNICOM <b>122.8 (CTAF)</b> <b>①</b>
--------------------------	---	--



ELEV 993	TDZE 992
----------	----------



3000 AKIRE	WELIK 1.7 NM to RW31	TUPUY 2600	OYITE 4 NM Holding Pattern	
* LNAV only	* 1 NM to RW31	2600	3000	
RW31	1560*	304°	124°	
1 NM	0.7	3.2 NM	6.1 NM	
GP 3.00°			TCH 40	
CATEGORY	A	B	C	D
LPV DA	1242-7/8	250 (300-7/8)		NA
LNAV/VNAV DA	1253-7/8	261 (300-7/8)		NA
LNAV MDA	1360-1	368 (400-1)		NA
<b>C</b> CIRCLING	1420-1	1480-1		NA
	427 (500-1)	487 (500-1)		

NC-1, 21 MAY 2020 to 18 JUN 2020

NC-1, 21 MAY 2020 to 18 JUN 2020