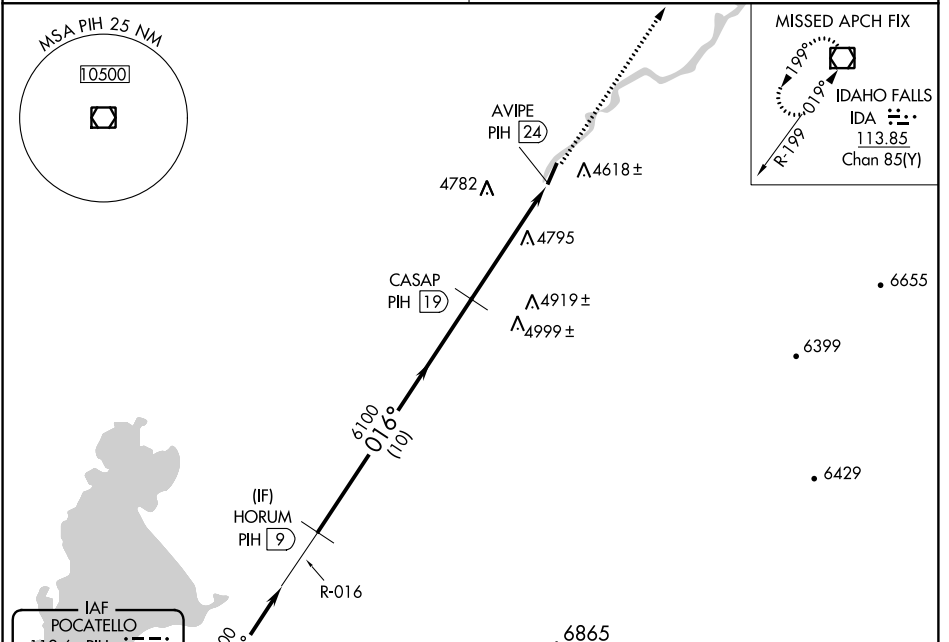


VOR/DME PIH 112.6 Chan 73	APP CRS 016°	Rwy Idg TDZE Apt Elev 4492	N/A N/A 4492
---	------------------------	---	---

VOR/DME-C
MCCARLEY FIELD (U02)

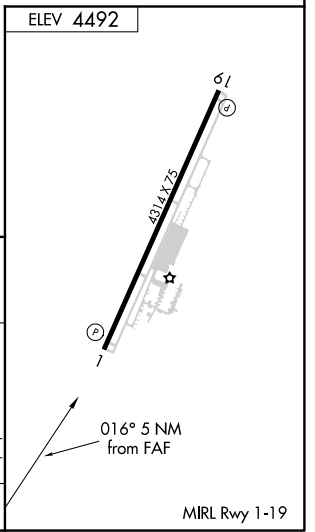
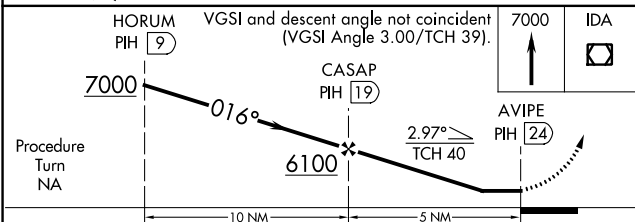
▼ Use Pocatello altimeter setting, when not received use Idaho Falls altimeter setting. Helicopter visibility reduction below 1 SM NA.
▲ NA MISSED APPROACH: Climb to 7000 direct IDA VOR/DME and hold.

SALT LAKE CITY CENTER **128.35 239.25** UNICOM **122.8** (CTAF)



Holding not required for arrivals at PIH VOR/DME via V21-257 northbound.

ELEV 4492



CATEGORY	A	B	C	D
CIRCLING	5460-1¼ 968 (1000-1¼)	5460-1½ 968 (1000-1½)	5460-3	968 (1000-3)

NW-1, 21 MAY 2020 to 18 JUN 2020

NW-1, 21 MAY 2020 to 18 JUN 2020