

NDB FOZ 345	APP CRS 160°	Rwy Idg TDZE Apt Elev	3998 1351 1351
-----------------------	------------------------	-----------------------------	---

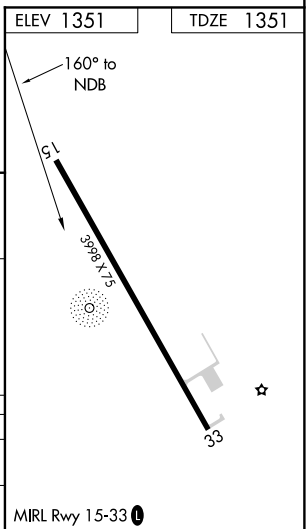
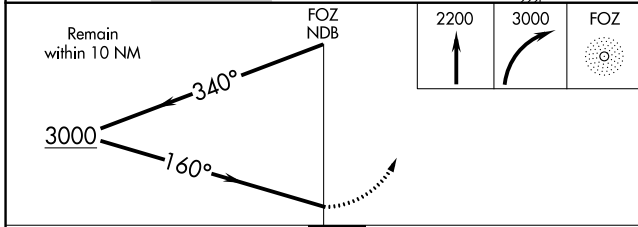
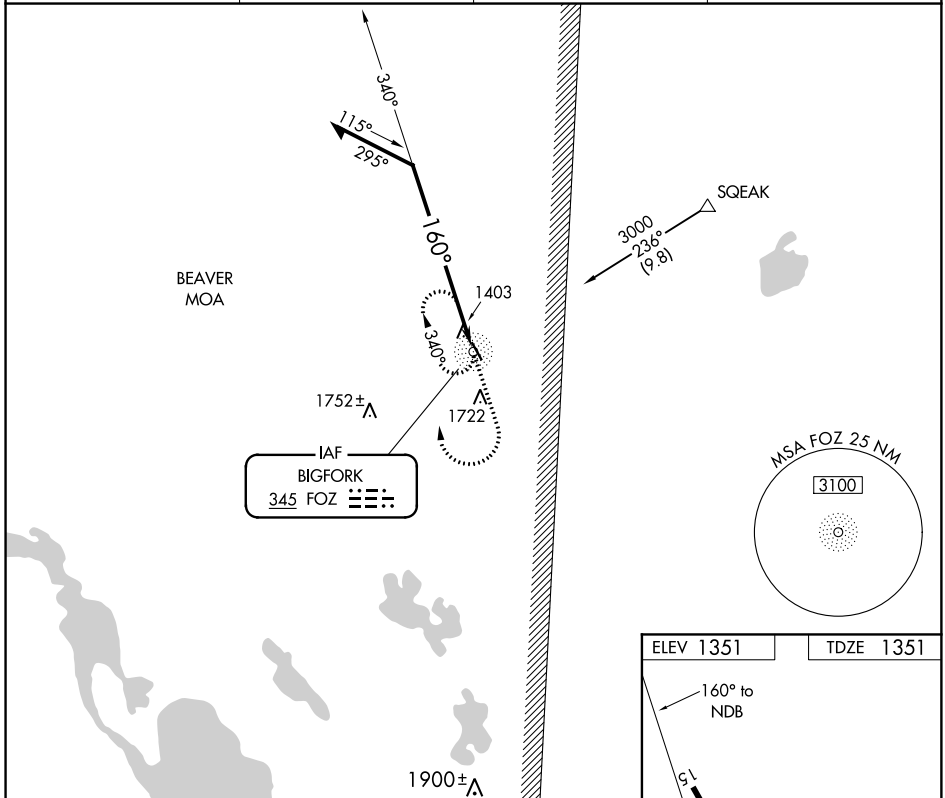
NDB RWY 15

BIGFORK MUNI (FOZ)

⚠ Procedure not authorized when BEAVER MOA is active. Night landing Rwy 33 NA. Helicopter visibility reduction below 3/4 SM NA. When local altimeter setting not received, use Grand Rapids altimeter setting and increase all MDA 100 feet.

⚠ NA MISSED APPROACH: Climb to 2200 then climbing right turn to 3000 direct FOZ NDB and hold.

AWOS-3 345	MINNEAPOLIS CENTER 127.9 281.45	GCO 121.725	CTAF 122.9
----------------------	---	-----------------------	----------------------



CATEGORY	A	B	C	D
S-15	1840-1	489 (500-1)	NA	
CIRCLING	1840-1	489 (500-1)	NA	

NC-1, 21 MAY 2020 to 18 JUN 2020

NC-1, 21 MAY 2020 to 18 JUN 2020