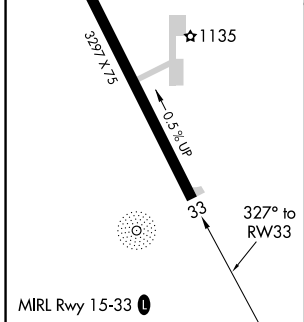
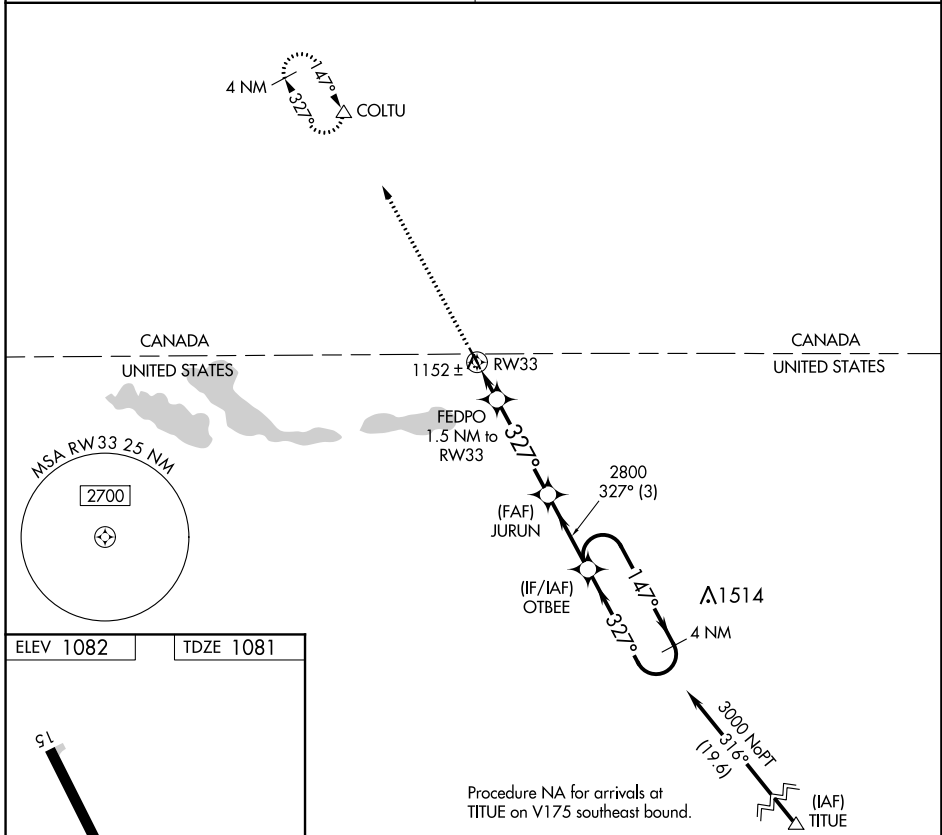


| | | |
|-------------|----------|-------------|
| APP CRS | Rwy Idg | 3297 |
| 327° | TDZE | 1081 |
| | Apt Elev | 1082 |

RNAV (GPS) RWY 33

PINEY PINECREEK BORDER (48Y)

| | |
|---|---|
| RNP APCH. | MISSED APPROACH: Climb to 3700 direct COLTU and hold. |
| <p>▼ Use Roseau altimeter setting; when not received, use</p> <p>▲ NA Warroad altimeter setting and increase all MDA 40 feet.</p> | |
| MINNEAPOLIS CENTER 134.75 251.1 | UNICOM 122.8 (CTAF) 0 |



| | | | |
|----------|----------------------|-------------|----------------------|
| 3700 | COLTU | OTBEE | 4 NM Holding Pattern |
| ↑ | △ | | |
| | FEDPO 1.5 NM to RW33 | JURUN | OTBEE |
| | 1580 | 2800 | 3000 |
| | 1.5 | 3.8 NM | 3 NM |
| CATEGORY | A | B | C D |
| LNAV MDA | 1440-1 | 359 (400-1) | NA |

NC-1, 21 MAY 2020 to 18 JUN 2020

NC-1, 21 MAY 2020 to 18 JUN 2020