

WAAS CH 82228 W08A	APP CRS 082°	Rwy Idg 12000 TDZE 5354 Apt Elev 5434
--	------------------------	--

RNAV (GPS) Y RWY 8

DENVER INTL (DEN)

▼ For uncompensated Baro-VNAV systems, LNAV/VNAV NA below -25°C (-13°F) or above 47°C (117°F). Simultaneous approach authorized with Rwy 7. DME/DME RNP- 0.3 NA. LNAV procedure NA during simultaneous operations. Use of FD or AP providing RNAV track guidance during simultaneous operations. For inoperative MALSR, increase LNAV Cat C/D visibility to RVR 5500. # RVR 1800 authorized with use of FD or AP or HUD to DA.

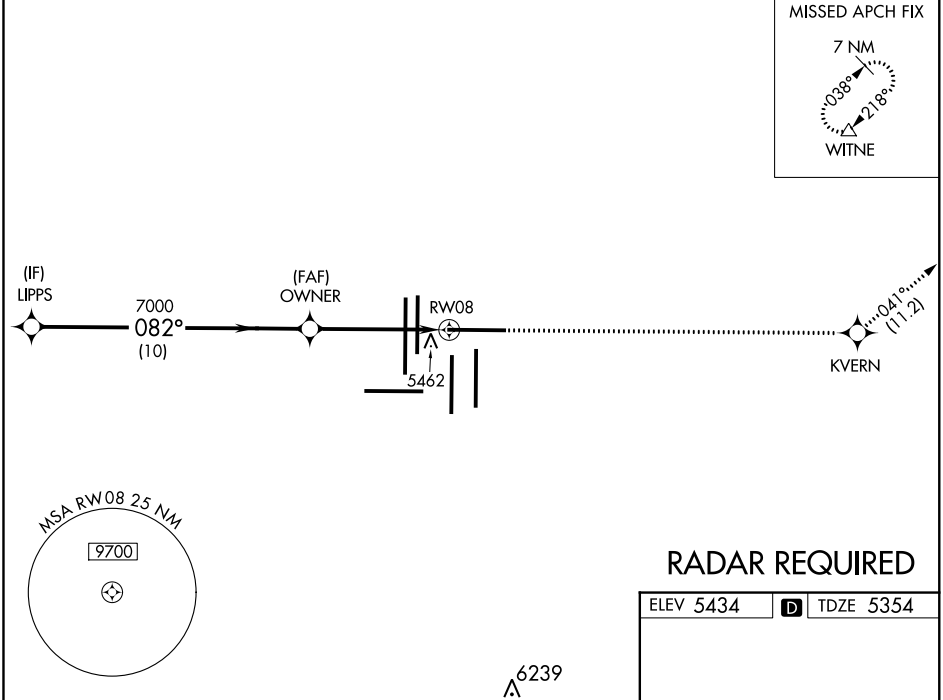
MALSR



MISSED APPROACH: Climb to 10000 direct KVERN and on track 041° to WITNE and hold.

D-ATIS ARR 125.6 379.9 DEP 134.025	DENVER APP CON 119.3 307.3 (NORTH)	120.35 379.3 (SOUTH)	DENVER TOWER 132.35 239.275	GND CON 121.85 377.1	CLNC DEL 118.75	CPDLC
--	---	--------------------------------	---------------------------------------	--------------------------------	---------------------------	-------

MISSED APCH FIX



RADAR REQUIRED

ELEV 5434	D	TDZE 5354
-----------	----------	-----------

HIRL all Rwys
TDZ/CL Rwys 7, 16L, 16R, 17R, 26, 34L, 34R, 35L, 35R

VGSI and RNAV glidepath not coincident (VGSI Angle 3.00/TCH 70).

10000	KVERN	tr 041°	WITNE
*LNAV only			
GP 3.00° TCH 52	OWNER	*0.9 NM to RWY 8	RWY 8
<p>10 NM 4.1 NM 0.9 NM</p>			
CATEGORY	A	B	C
LPV DA #	5554/24		200 (200-½)
LNAV/VNAV DA	5833/60		479 (400-1¼)
LNAV MDA	5720/24	366 (300-½)	5720/35 366 (300-⅝)

SW-1, 21 MAY 2020 to 18 JUN 2020

SW-1, 21 MAY 2020 to 18 JUN 2020