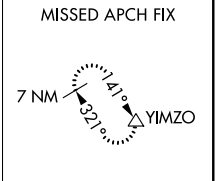
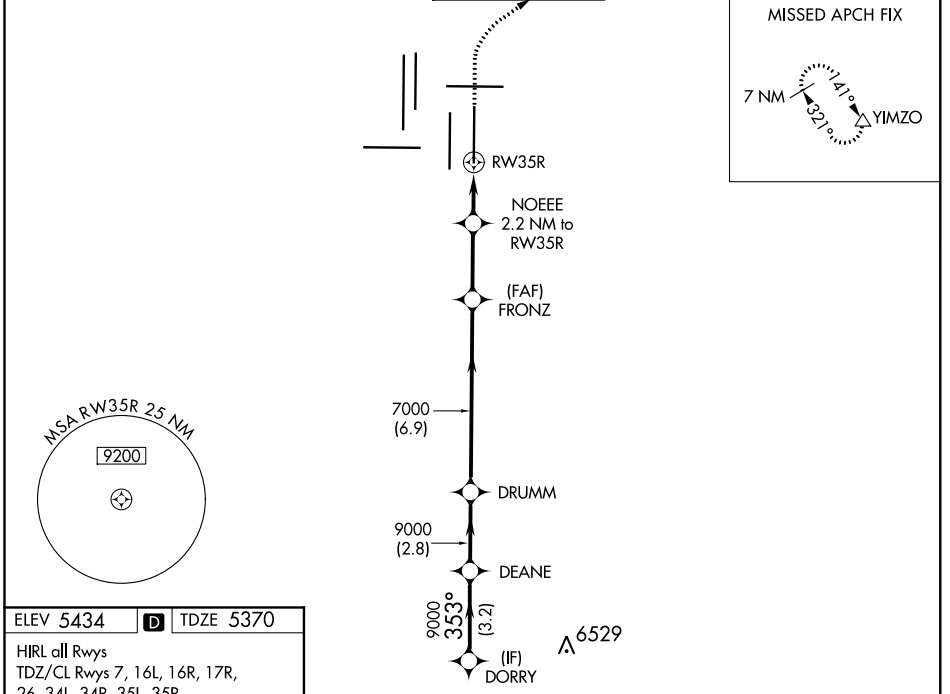


WAAS CH <b>45719</b> <b>W35B</b>	APP CRS <b>353°</b>	Rwy Idg <b>12000</b> TDZE <b>5370</b> Apt Elev <b>5434</b>
--	------------------------	--

# RNAV (GPS) Y RWY 35R

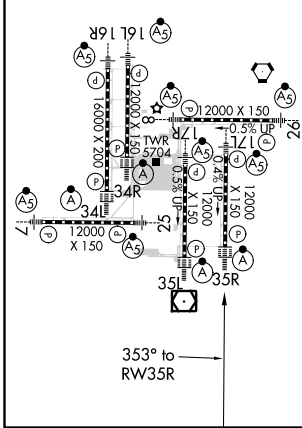
DENVER INTL (DEN)

<p><b>▼</b> For uncompensated Baro-VNAV systems, LNAV/VNAV NA below -25°C (-13°F) or above 45°C (114°F). DME/DME RNP-0.3 NA. For inoperative ALSF, increase LNAV/VNAV visibility all Cats to RVR 4000. LNAV procedure NA during simultaneous operations. Simultaneous approach authorized with Rwy 34L, Rwy 34R, and Rwy 35L. Use of FD or AP providing RNAV track guidance required during simultaneous operations.</p>		<p>ALSF-2</p>	<p>MISSED APPROACH: Climb to 5900 then climbing right turn to 8000 direct YIMZO and hold.</p>		
D-ATIS ARR <b>125.6 379.9</b> DEP <b>134.025</b>	DENVER APP CON <b>119.3 307.3</b> (NORTH) <b>120.35 379.3</b> (SOUTH)	DENVER TOWER <b>132.35 239.275</b>	GND CON <b>121.85 377.1</b>	CLNC DEL <b>118.75</b>	CPDLC



ELEV 5434	<b>D</b>	TDZE 5370
-----------	----------	-----------

HIRL all Rwys  
TDZ/CL Rwys 7, 16L, 16R, 17R,  
26, 34L, 34R, 35L, 35R



<p>VGSI and RNAV glidepath not coincident (VGSI Angle 3.00/TCH 66).</p>		5900	8000	YIMZO
<p>DORRY DEANE DRUMM</p>		<p>9000 → 9000 (353°)</p>	<p>9000 → 7000 (353°)</p>	<p>7000 → 7000 (6120)</p>
<p>GP 3.00° TCH 59</p>		<p>NOEEE 2.2 NM to RW35R</p>	<p>*1.1 NM to RW35R</p>	<p>*1.1 NM to RW35R</p>
<p>← 3.2 NM → 2.8 NM → 6.9 NM → 2.7 NM → 1.1 NM → 1.1 NM →</p>				
CATEGORY	A	B	C	D
LPV DA	DA	5570/18	200 (200-1/2)	
LNAV/VNAV DA	DA	5620/24	250 (200-1/2)	
LNAV MDA		5800/24	430 (400-1/2)	5800/40 430 (400-3/4)

SW-1, 21 MAY 2020 to 18 JUN 2020

SW-1, 21 MAY 2020 to 18 JUN 2020