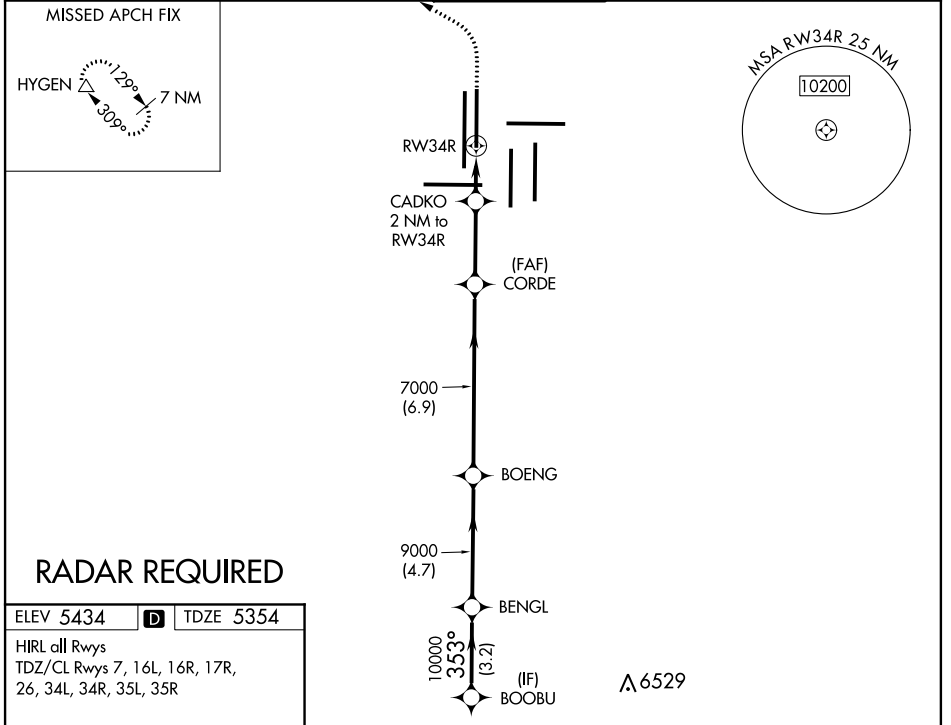


WAAS CH <b>90318</b> <b>W34B</b>	APP CRS <b>353°</b>	Rwy Idg <b>12000</b> TDZE <b>5354</b> Apt Elev <b>5434</b>
--	------------------------	--

# RNAV (GPS) Y RWY 34R

DENVER INTL (DEN)

<p><b>▼</b> For uncompensated Baro-VNAV systems, LNAV/VNAV NA below -25°C (-13°F) or above 46°C (114°F). DME/DME RNP-0.3 NA. LNAV procedure NA during simultaneous operations. Simultaneous approach authorized with Rwy 35L/R. Use of FD or AP providing RNAV track guidance required during simultaneous operations.</p>		<p>ALSF-2</p>	<p>MISSED APPROACH: Climb to 6000 then climbing left turn to 10000 direct HYGEM and hold.</p>		
<p>D-ATIS ARR <b>125.6 379.9</b> DEP <b>134.025</b></p>	<p>DENVER APP CON <b>119.3 307.3</b> (NORTH)</p>	<p>DENVER TOWER <b>135.3 351.95</b></p>	<p>GND CON <b>127.5 379.175</b></p>	<p>CLNC DEL <b>118.75</b></p>	<p>CPDLC</p>



SW-1, 21 MAY 2020 to 18 JUN 2020

SW-1, 21 MAY 2020 to 18 JUN 2020

## RADAR REQUIRED

ELEV 5434	<b>D</b>	TDZE 5354
-----------	----------	-----------

HIRL all Rwys  
TDZ/CL Rwys 7, 16L, 16R, 17R,  
26, 34L, 34R, 35L, 35R

VGSI and RNAV glidepath not coincident (VGSI Angle 3.00/TCH 63).

BOOBU	BENGL	BOENG	CORDE	CADKO	RW34R
10000	9000	7000	7000	2 NM to RW34R	
GP 3.00°	353°	353°	353°	*6040	
TCH 59	10000	9000	7000		
	3.2 NM	4.7 NM	6.9 NM	3 NM	2 NM

6000	10000	HYGEM
↑	↙	△

CATEGORY	A	B	C	D
LPV DA		5554/18	200 (200-½)	
LNAV/VNAV DA		5838/60	484 (500-1¼)	
LNAV MDA	5940/24	586 (600-½)	5940-1¼	586 (600-1¼)