

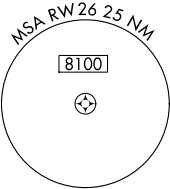
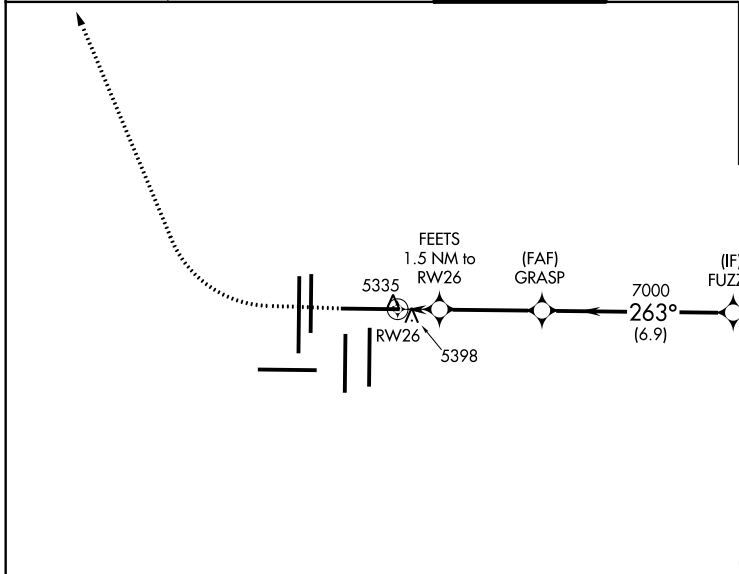
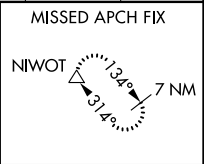
WAAS CH 58128 W26A	APP CRS 263°	Rwy Idg TDZE Apt Elev	12000 5309 5434
--	------------------------	-----------------------------	--

RNAV (GPS) Y RWY 26

DENVER INTL (DEN)

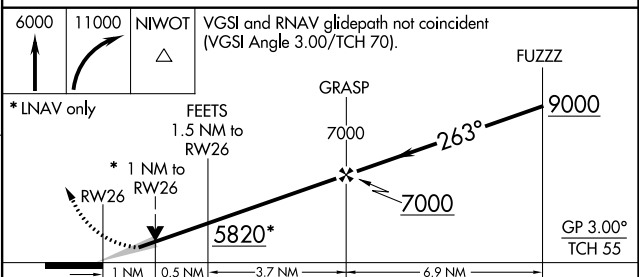
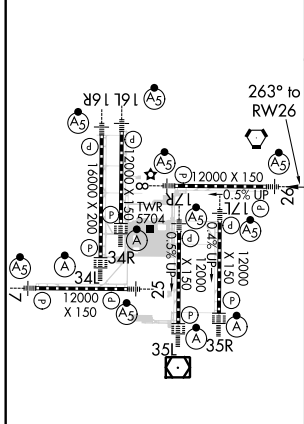
RNP APCH. RADAR required.	MALSR 	MISSED APPROACH: Climb to 6000 then climbing right turn to 11000 direct NIWOT and hold.
<p>▼ For uncompensated Baro-VNAV systems, LNAV/VNAV NA below -25°C or above 46°C. Simultaneous approach authorized with Rwy 25. For inoperative ALS, increase LNAV/VNAV all Cats visibility to RVR 4000 and LNAV Cat C/D visibility to RVR 5500. LNAV procedure NA during simultaneous operations. Use of FD or AP providing RNAV track guidance required during simultaneous operations.</p>		

D-ATIS ARR 125.6 379.9 DEP 134.025	DENVER APP CON 119.3 307.3 (NORTH) (SOUTH)	DENVER TOWER 132.35 239.275	GND CON 121.85 377.1	CLNC DEL 118.75	CPDLC
---	--	--	---------------------------------------	---------------------------	-------



ELEV 5434	D	TDZE 5309
-----------	----------	-----------

△ 6147



	1 NM	0.5 NM	3.7 NM	6.9 NM	
CATEGORY	A	B	C	D	
LPV DA	DA	5509/18	200 (100-1/2)		
LNAV/VNAV DA	DA	5559/24	250 (200-1/2)		
LNAV MDA	5660/24	351 (300-1/2)	5660/30	351 (300-5/8)	

HIRL all Rwys
TDZ/CL Rwys 7, 16L, 16R, 17R,
26, 34L, 34R, 35L, 35R