

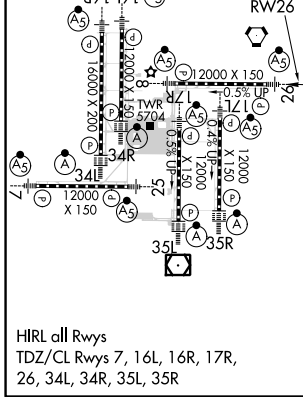
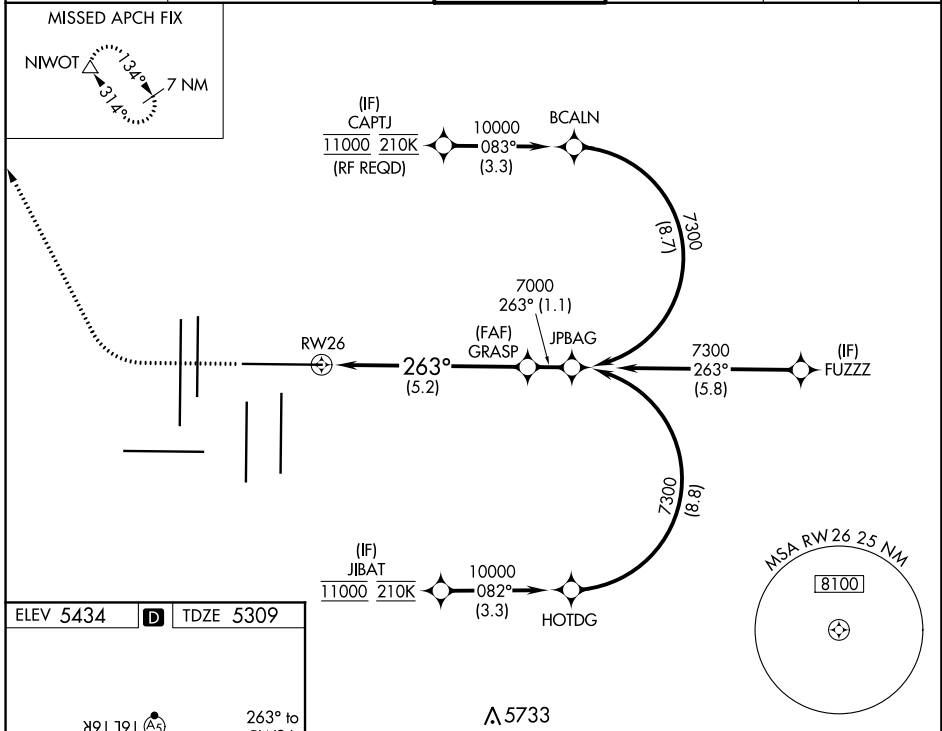
APP CRS <b>263°</b>	Rwy Idg <b>12000</b>
	TDZE <b>5309</b>
	Apt Elev <b>5434</b>

# RNAV (RNP) Z RWY 26

DENVER INTL (DEN)

RNP AR APCH.	MALSR 	MISSED APPROACH: Climb to 6000 then climbing right turn to 10000 direct NIWOT and hold.
<p>▼ Simultaneous approach authorized. For uncompensated Baro-VNAV systems, procedure NA below -23°C or above 54°C. For inop ALS, increase RNP 0.15 all Cats visibility to RVR 4000, and increase RNP 0.30 all Cats visibility to RVR 4500.</p>		

D-ATIS ARR <b>125.6 379.9</b> DEP <b>134.025</b>	DENVER APP CON <b>119.3 307.3</b> (NORTH) <b>120.35 379.3</b> (SOUTH)	DENVER TOWER <b>132.35 239.275</b>	GND CON <b>121.85 377.1</b>	CLNC DEL <b>118.75</b>	CPDLC
--	---	---------------------------------------	--------------------------------	---------------------------	-------



<b>A 5733</b>				
6000	10000	NIWOT	GRASP 7000	
VGSi and RNAV glidepath not coincident (VGSi Angle 3.00°/TCH 70°).				
RWY26 $\triangle$ 263° $\rightarrow$ 7000				
See planview for multiple IF locations.				
5.2 NM				
GP 3.00° TCH 55				
CATEGORY	A	B	C	D
RNP 0.15 DA	5566/24 257 (200-½)			
RNP 0.30 DA	5611/24 302 (200-½)			
<b>AUTHORIZATION REQUIRED</b>				

SW-1, 21 MAY 2020 to 18 JUN 2020

SW-1, 21 MAY 2020 to 18 JUN 2020