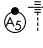


RNAV (RNP) Z RWY 17R

DENVER INTL (DEN)

APP CRS 173°	Rwy Idg 12000
	TDZE 5392
	Apt Elev 5434

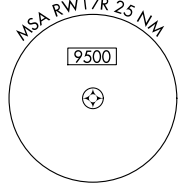
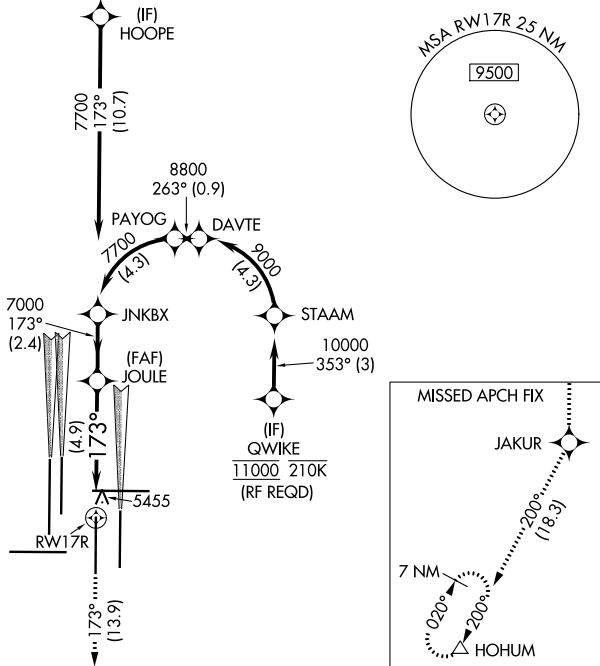
▽ GPS required. For inoperative MALSR, increase RNP 0.10 all Cats visibility to RVR 5000 and RNP 0.30 all Cats visibility to 1 1/2 mile. Simultaneous approach authorized. Use of FD or AP providing RNAV track guidance required during simultaneous operations. For uncompensated Baro-VNAV systems, procedure NA below -25°C (-13°F) or above 45°C (114°F).

MALSR

MISSED APPROACH: Climb to 10000 on track 173° to JAKUR and on track 200° to HOHUM and hold.

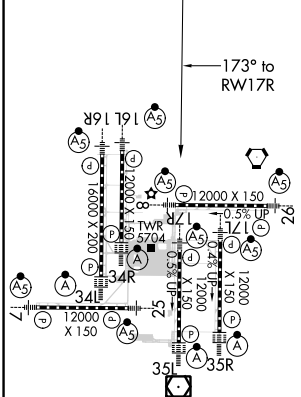
D-ATIS ARR 125.6 379.9 DEP 134.025	DENVER APP CON 119.3 307.3 (NORTH) 120.35 379.3 (SOUTH)	DENVER TOWER 133.3 322.45	GND CON 121.85 377.1	CLNC DEL 118.75	CPDLC
--	---	-------------------------------------	--------------------------------	---------------------------	-------

RADAR REQUIRED

A6260

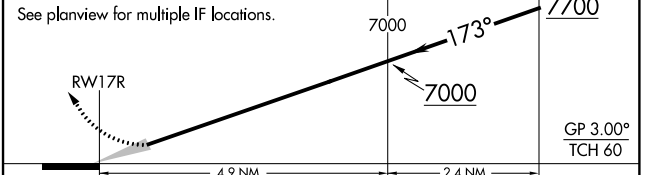


ELEV 5434	D	TDZE 5392
-----------	----------	-----------



HIRL all Rwys
 TDZ/CL Rwys 7, 16L, 16R, 17R,
 26, 34L, 34R, 35L, 35R

10000 tr 173°	JAKUR	tr 200°	HOHUM	VGSI and RNAV glidepath not coincident (VGSI Angle 3.00°/TCH 69°).
------------------	-------	---------	-------	--



CATEGORY	A	B	C	D
RNP 0.10 DA	5722/32 330 (300-5/8)			
RNP 0.30 DA	5894/60 502 (500-1 1/4)			

AUTHORIZATION REQUIRED

SW-1, 21 MAY 2020 to 18 JUN 2020

SW-1, 21 MAY 2020 to 18 JUN 2020