

# NIIXX ONE ARRIVAL (RNAV) Transition Routes

DENVER APP CON

126.55 269.525

D-ATIS ARR

125.6 379.9

DENVER TOWER

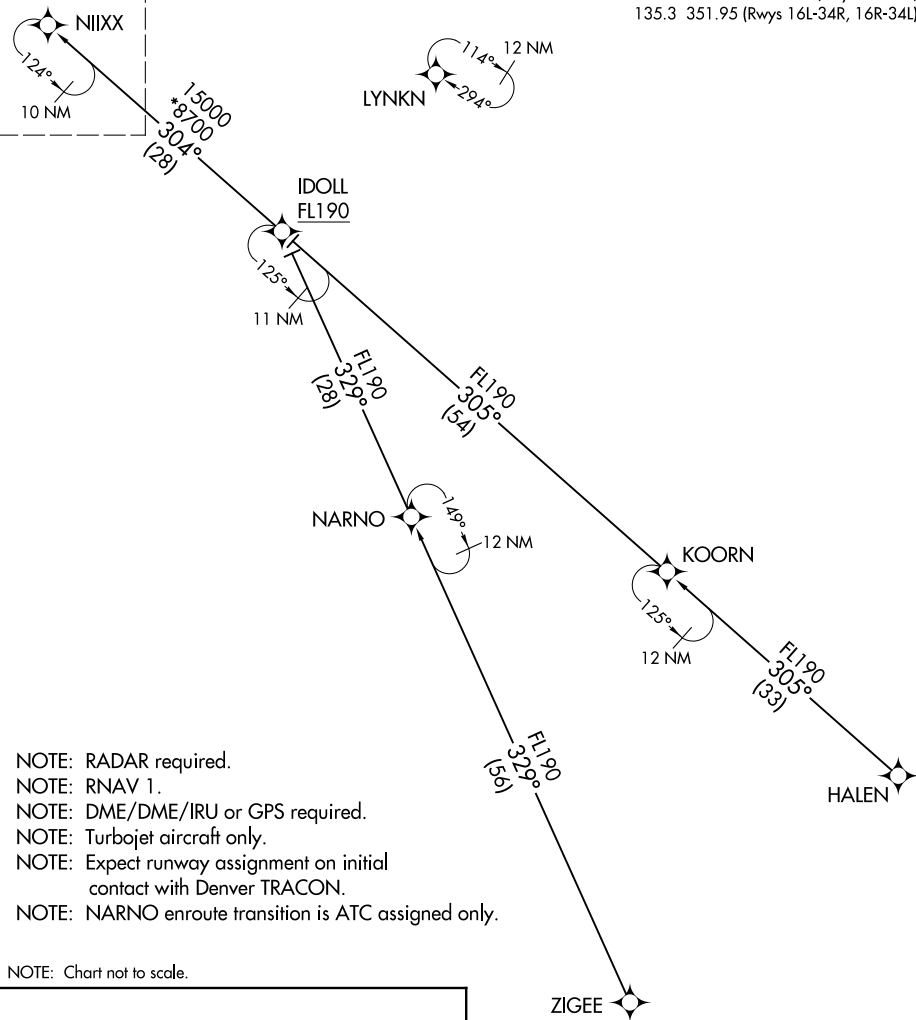
128.75 273.55 (Rwy 7-25)

132.35 239.275 (Rwys 8-26, 17L-35R)

133.3 322.45 (Rwy 17R-35L)

135.3 351.95 (Rwys 16L-34R, 16R-34L)

See following page  
for arrival routes



- NOTE: RADAR required.
- NOTE: RNAV 1.
- NOTE: DME/DME/IRU or GPS required.
- NOTE: Turbojet aircraft only.
- NOTE: Expect runway assignment on initial contact with Denver TRACON.
- NOTE: NARNO enroute transition is ATC assigned only.

NOTE: Chart not to scale.

HALEN TRANSITION (HALEN.NIIXX1)  
NARNO TRANSITION (NARNO.NIIXX1)  
ZIGEE TRANSITION (ZIGEE.NIIXX1)

(CONTINUED ON FOLLOWING PAGE)

# NIIXX ONE ARRIVAL (RNAV) Transition Routes

SW-1, 21 MAY 2020 to 18 JUN 2020

SW-1, 21 MAY 2020 to 18 JUN 2020