

# LARKS TWO ARRIVAL

AL-9077 (FAA)

DENVER, COLORADO

DENVER APP CON  
 120.35 379.3  
 BUCKLEY AFB ATIS  
 119.675 259.3  
 CENTENNIAL ATIS  
 120.3  
 COLORADO AIR AND SPACE PORT ATIS  
 119.025  
 DENVER INTL D-ATIS ARR  
 125.6 379.9  
 ROCKY MOUNTAIN METROPOLITAN ATIS  
 126.25

GILL  
 114.2 GLL  
 Chan 89  
 N40°30.23'-W104°33.18'

DENVER  
 117.9 DEN  
 Chan 126  
 N39°48.75'-W104°39.64'

JEFFCO  
 115.4 BJC  
 Chan 101

CENTENNIAL  
 108.2 APA  
 N39°34.51'-W104°50.71'

RED TABLE  
 113.0 DBL  
 Chan 77

LARKS  
 N39°15.44'-W105°18.31'  
**TURBOJET VERTICAL NAVIGATION**  
**PLANNING INFORMATION**  
 Expect 17000 250K  
 or as assigned by ATC.

PAYDD  
 N39°24.10'  
 W105°04.73'

TERRO  
 N38°53.47'  
 W105°52.38'

MURFE  
 N39°08.29'  
 W105°29.47'

FALCON  
 116.3 FQF  
 Chan 110  
 N39°41.41'  
 W104°37.26'

BLUE MESA  
 114.9 HBU  
 Chan 96  
 N38°27.13'-W107°02.38'

BLACK FOREST  
 112.5 BRK  
 Chan 72

HICKY  
 N38°46.28'  
 W106°03.38'

PAPPA  
 N38°29.56'  
 W106°28.74'

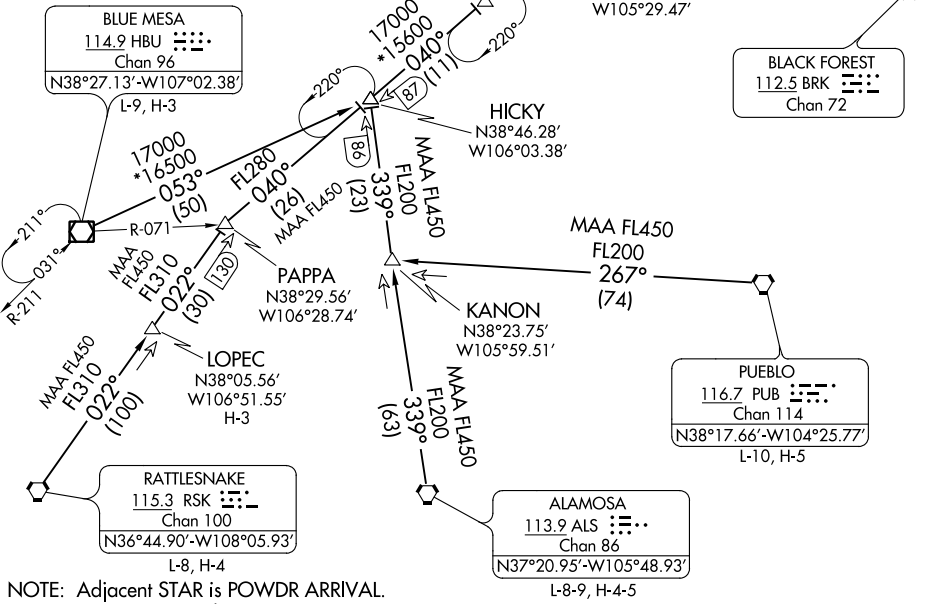
KANON  
 N38°23.75'  
 W105°59.51'

LOPEC  
 N38°05.56'  
 W106°51.55'  
 H-3

PUEBLO  
 116.7 PUB  
 Chan 114  
 N38°17.66'-W104°25.77'

RATTLESNAKE  
 115.3 RSK  
 Chan 100  
 N36°44.90'-W108°05.93'

ALAMOSA  
 113.9 ALS  
 Chan 86  
 N37°20.95'-W105°48.93'



NOTE: Adjacent STAR is POWDR ARRIVAL.  
 NOTE: RADAR required.  
 NOTE: Chart not to scale.

(NARRATIVE ON FOLLOWING PAGE)

# LARKS TWO ARRIVAL

DENVER, COLORADO

SW-1, 21 MAY 2020 to 18 JUN 2020

SW-1, 21 MAY 2020 to 18 JUN 2020