

KOHOE FOUR ARRIVAL (RNAV) Transition Routes

SW-1, 21 MAY 2020 to 18 JUN 2020

DENVER APP CON
124.95 346.4
D-ATIS ARR
125.6 379.9

NOTE: RADAR required.

NOTE: RNAV 1.

NOTE: DME/DME/IRU or GPS required.

NOTE: Turbojet aircraft only.

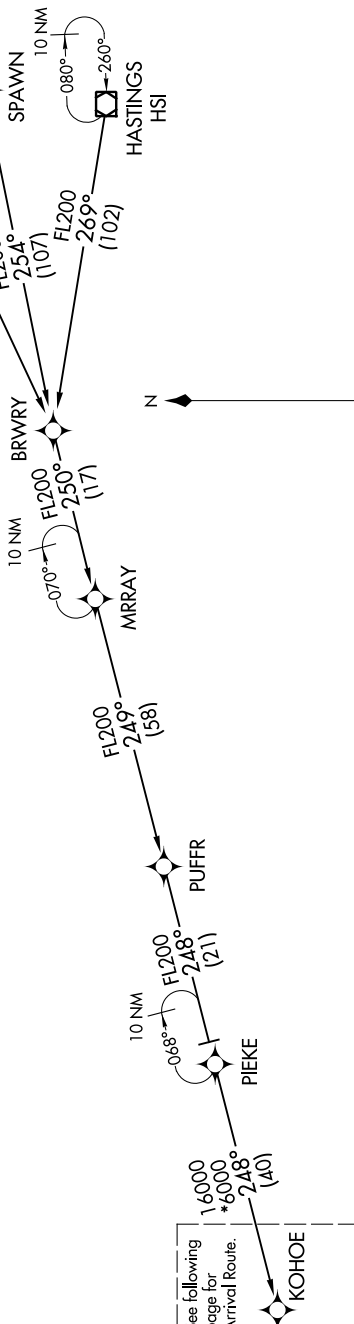
NOTE: Expect runway assignment on initial contact with Denver TRACON.

NOTE: Descend via mach number until transition to 280K.

NOTE: Maintain 280K until slowed by STAR or assigned by ATC.

NOTE: For non-GPS equipped aircraft using OBH transition,

ONL DME must be operational.



See following page for *6000 Arrival Route.

HASTINGS TRANSITION (HSI.KOHOE4)
SPAWN TRANSITION (SPAWN.KOHOE4)
WOLBACH TRANSITION (OBH.KOHOE4)

(CONTINUED ON FOLLOWING PAGE)

NOTE: Chart not to scale.

SW-1, 21 MAY 2020 to 18 JUN 2020