

LOC/DME I-FUI <b>108.9</b> Chan 26	APP CRS <b>083°</b>	Rwy Idg TDZE Apt Elev	<b>12000</b> <b>5354</b> <b>5434</b>
--	------------------------	-----------------------------	--

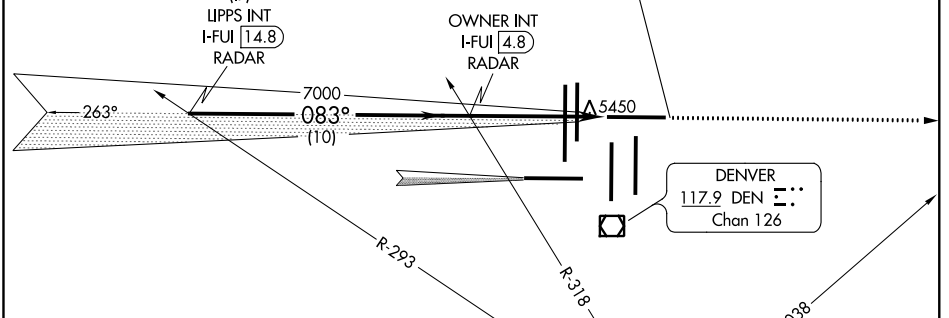
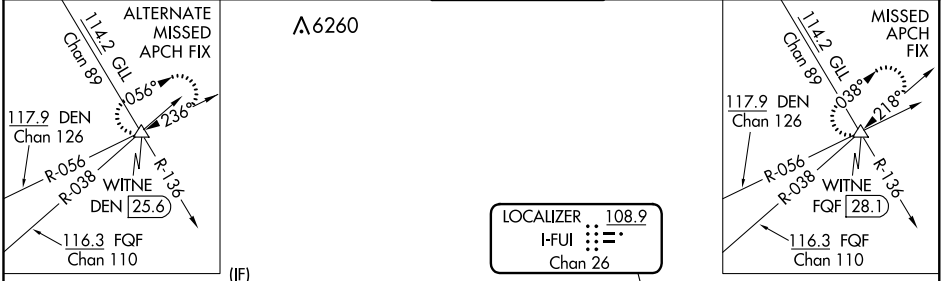
# ILS or LOC RWY 8

## DENVER INTL (DEN)

**Simultaneous approach authorized with Rwy 7. For inoperative MALSR, increase S-LOC 8 Cat C/D visibility to RVR 5500. \*\* RVR 1800 authorized with use of FD or AP or HUD to DA.**

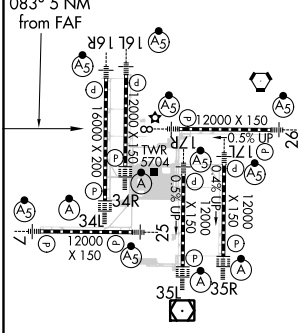
**MALS** MISSED APPROACH: Climb to 10000 on heading 083° and on FGF VORTAC R-038 to WITNE INT/FGF 28.1 DME and hold.

D-ATIS ARR <b>125.6 379.9</b> DEP <b>134.025</b>	DENVER APP CON <b>119.3 307.3</b> (NORTH) <b>120.35 379.3</b> (SOUTH)	DENVER TOWER <b>132.35 239.275</b>	GND CON <b>121.85 377.1</b>	CLNC DEL <b>118.75</b>	CPDLC
--	---	---------------------------------------	--------------------------------	---------------------------	-------



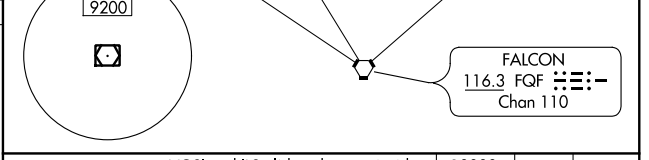
### RADAR REQUIRED

ELEV 5434	<b>D</b>	TDZE 5354
-----------	----------	-----------

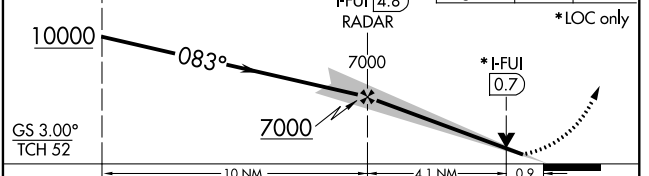


TDZ/CL Rwy 7, 16L, 16R, 17R, 26, 34L, 34R, 35L, 35R  
HIRL all Rwy

FAF to MAP 5 NM					
Knots	60	90	120	150	180
Min:Sec	5:00	3:20	2:30	2:00	1:40



LIPPS INT I-FUI 14.8 RADAR  
VGSi and ILS glidepath not coincident (VGSi Angle 3.00/TCH 70).  
OWNER INT I-FUI 4.8 RADAR  
10000 hdg 083°  
FGF R-038  
WITNE   
\*LOC only



GS 3.00° TCH 52	10000	7000	0.9
CATEGORY	A	B	C
S-ILS 8**	5554/24 200 (200-1/2)		
S-LOC 8	5700/24	346 (300-1/2)	5700/30 346 (300-5/8)

SW-1, 21 MAY 2020 to 18 JUN 2020

SW-1, 21 MAY 2020 to 18 JUN 2020