

LOC/DME I-DXU 111.9 Chan 56	APP CRS 353°	Rwy Idg TDZE Apt Elev 16000 5327 5434
--	------------------------	---

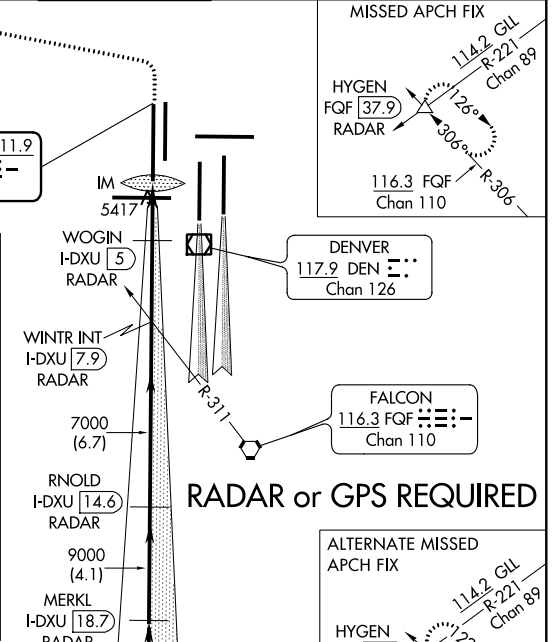
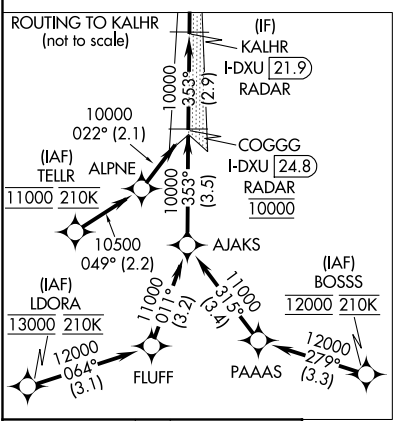
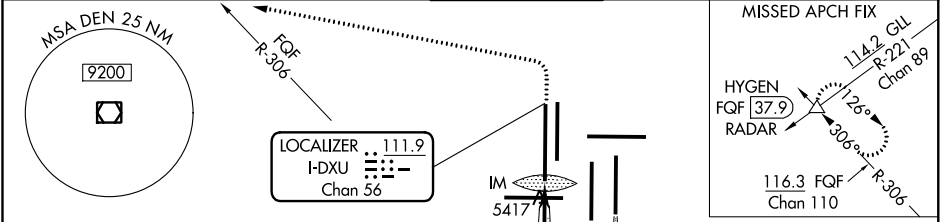
ILS or LOC RWY 34L

DENVER INTL (DEN)

▼ RADAR or DME required. Simultaneous approach authorized with Rwy 35L/R. For inoperative ALSF, increase S-LOC Cats C/D visibility to RVR 5500.

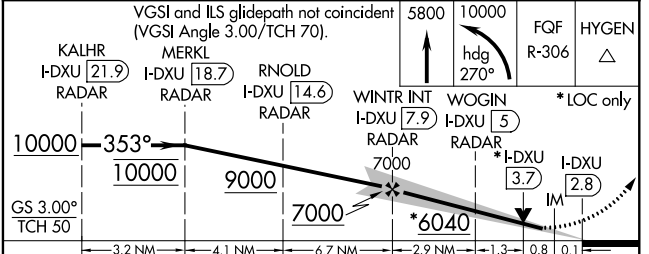
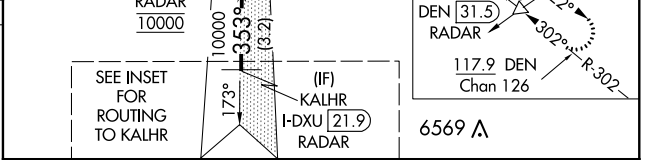
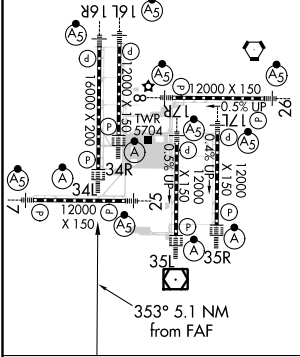
ALSF-2 MISSED APPROACH: Climb to 5800 then climbing left turn to 10000 on heading 270° and on FGF VORTAC R-306 to HYGEN/FQG 37.9 DME/RADAR and hold.

D-ATIS ARR 125.6 379.9 DEP 134.025	DENVER APP CON 119.3 307.3 (NORTH) 120.35 379.3 (SOUTH)	DENVER TOWER 135.3 351.95	GND CON 127.5 379.175	CLNC DEL 118.75	CPDLC
--	---	-------------------------------------	---------------------------------	---------------------------	-------



ELEV 5434	D	TDZE 5327
-----------	---	-----------

HIRL all Rwys
TDZ/CL Rwys 7, 16L, 16R, 17R, 26, 34L, 34R, 35L, 35R



FAF to MAP 5.1 NM					
Knots	60	90	120	150	180
Min:Sec	5:06	3:24	2:33	2:02	1:42

CATEGORY	A	B	C	D
S-ILS 34L	5527/18 200 (100-½)			
S-LOC 34L	5680/24 353 (300-½)	5680/30 353 (300-¾)		

SW-1, 21 MAY 2020 to 18 JUN 2020

SW-1, 21 MAY 2020 to 18 JUN 2020