

LOC/DME I-ERP 111.55 Chan 52 (Y)	APP CRS 263°	Rwy Idg TDZE Apt Elev	12000 5355 5434
--	------------------------	-----------------------------	--

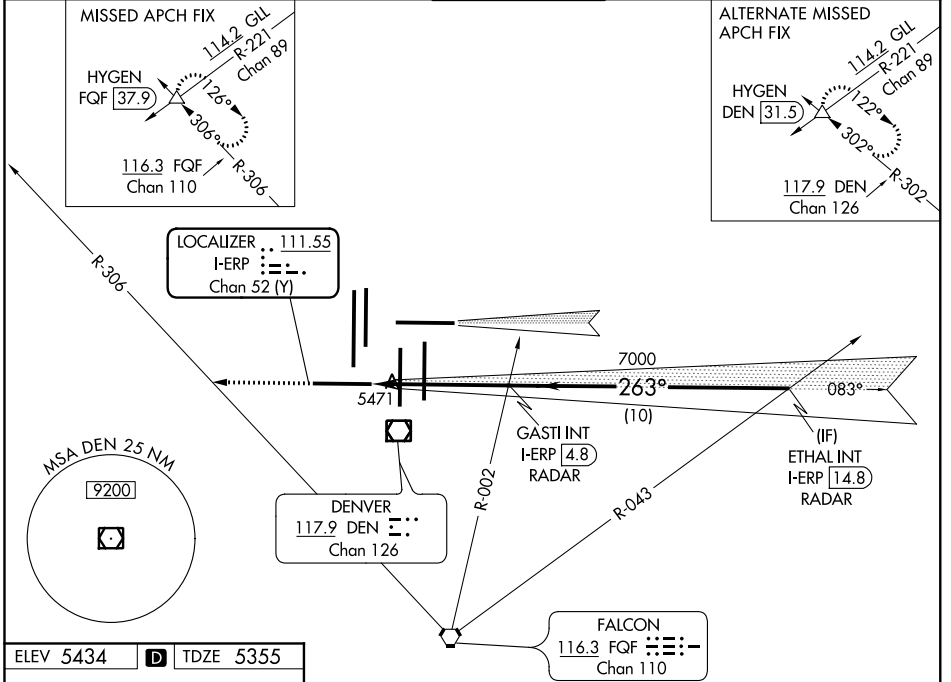
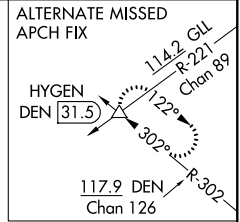
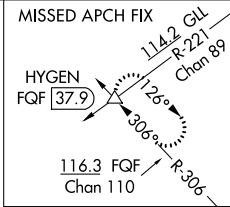
ILS or LOC RWY 25

DENVER INTL (DEN)

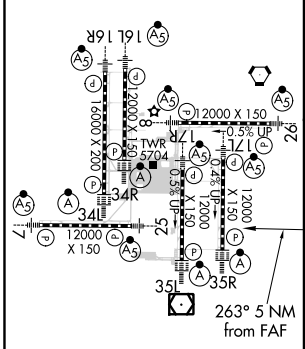
MAJRS MISSED APPROACH: Climb to 10000 on heading 263° and on FQF VORTAC R-306 to HYGEN INT/FQF 37.9 DME and hold.

Simultaneous approach authorized with Rwy 26. For inoperative MAJRS, increase S-LOC 25 Cat C and D visibility to RVR 5500.
**RVR 1800 authorized with use of FD or AP or HUD to DA.

D-ATIS ARR 125.6 379.9 DEP 134.025	DENVER APP CON 119.3 307.3 (NORTH) 120.35 379.3 (SOUTH)	DENVER TOWER 128.75 273.55	GND CON 127.5 379.175	CLNC DEL 118.75	CPDLC
--	---	--------------------------------------	---------------------------------	---------------------------	-------



ELEV 5434	D	TDZE 5355
-----------	----------	-----------



HIRL all Rwys
TDZ/CL Rwy 7, 16L, 16R, 17R, 26, 34L, 34R, 35L, 35R
FAF to MAP 5 NM

Knots	60	90	120	150	180
Min:Sec	5:00	3:20	2:30	2:00	1:40

△ 6270 ±

RADAR REQUIRED

10000 hdg 263° *LOC only

FQF R-306

HYGEN

VGSI and ILS glidepath not coincident (VGSI Angle 3.00/TCH 83).

GASTI INT I-ERP 4.8 RADAR

ETHAL INT I-ERP 14.8 RADAR

*I-ERP 0.7

7000

7000

10000

GS 3.00° TCH 55

0.9 NM 4.1 NM 10 NM

CATEGORY	A	B	C	D
S-ILS 25 **	5555/24 200 (200-½)			
S-LOC 25	5720/24 365 (300-½)		5720/35 365 (300-⅝)	

SW-1, 21 MAY 2020 to 18 JUN 2020

SW-1, 21 MAY 2020 to 18 JUN 2020