

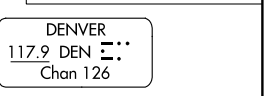
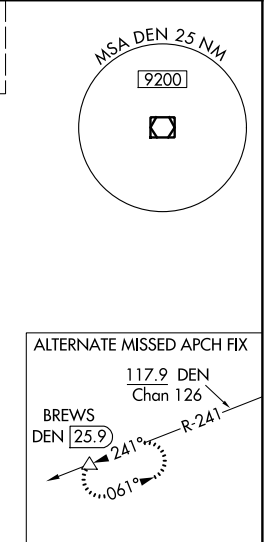
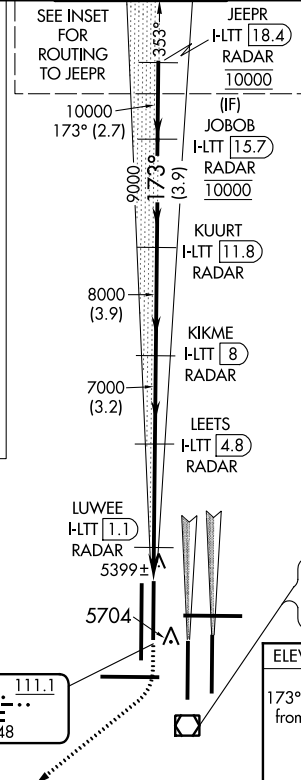
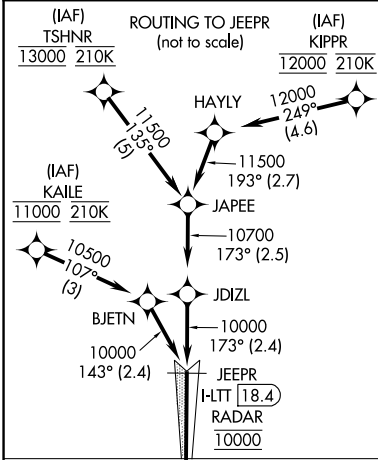
LOC/DME I-LTT 111.1 Chan 48	APP CRS 173°	Rwy Idg TDZE Apt Elev	12000 5357 5434
---	------------------------	-----------------------------	--

ILS or LOC RWY 16L

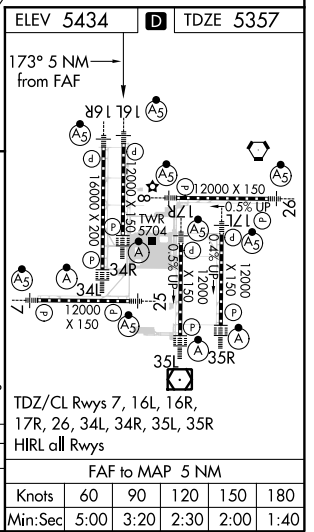
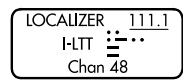
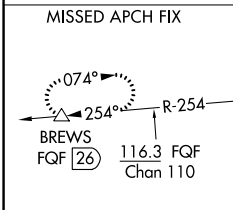
DENVER INTL (DEN)

Simultaneous approach authorized with Rwy 17L/17R. DME required. S-LOC 16L DME or RADAR required. For inoperative MALS, increase S-LOC Cat C/D visibility to RVR 4500.

D-ATIS ARR 125.6 379.9 DEP 134.025	DENVER APP CON 119.3 307.3 120.35 379.3 (NORTH) (SOUTH)	DENVER TOWER 135.3 351.95	GND CON 127.5 379.175	CLNC DEL 118.75	CPDLC
--	--	-------------------------------------	---------------------------------	---------------------------	-------



RADAR or GPS REQUIRED



5900	12000	FQF R-254	BREWES △	VGSi and ILS glidepath not coincident (VGSi Angle 3.00/TCH 71).			
*LOC only	LWEE I-LTT 1.1 RADAR	LEETS I-LTT 4.8 RADAR	KIKME I-LTT 8 RADAR	KUURT I-LTT 11.8 RADAR	JOBOB I-LTT 15.7 RADAR	JEEPR I-LTT 18.4 RADAR	
H-LTT 0.2	*H-LTT 0.6	7000	8000	9000	10000	10000	
0.8	0.5	3.7 NM	3.2 NM	3.9 NM	3.9 NM	2.7 NM	
CATEGORY	A	B	C	D			
S-ILS 16L	5557/18		200 (200-½)				
S-LOC 16L	5660/24		303 (300-½)				

SW-1, 21 MAY 2020 to 18 JUN 2020

SW-1, 21 MAY 2020 to 18 JUN 2020