

LOC/DME I-DPP 110.15 Chan 38(Y)	APP CRS 353°	Rwy Idg 12000 TDZE 5370 Apt Elev 5434
---	------------------------	--

ILS RWY 35R (SA CAT I)

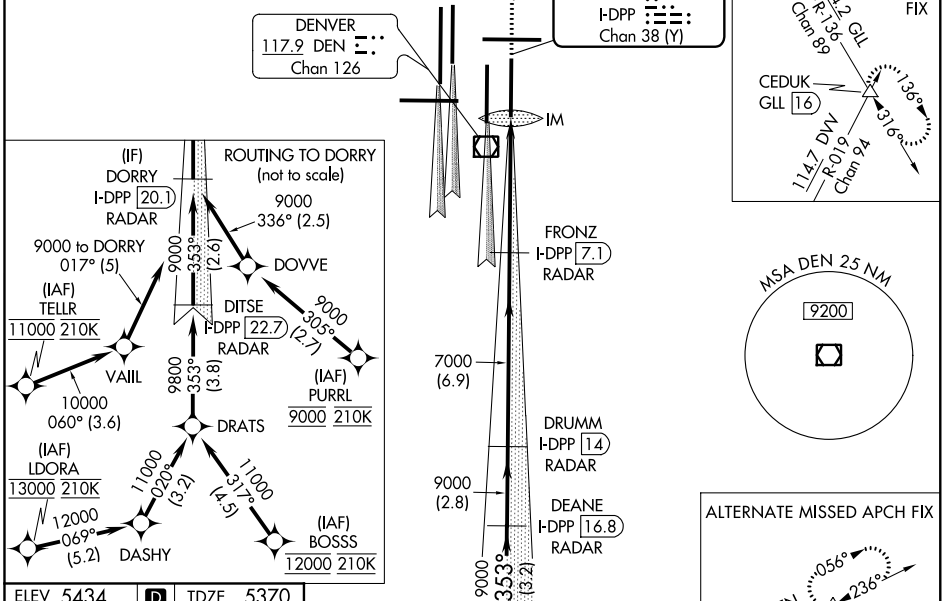
DENVER INTL (DEN)

⚠ Requires specific OPSPEC, MSPEC, or LOA approval and use of HUD to DH. Simultaneous approach authorized with Rwy 34L, Rwy 34R, and Rwy 35L.

ALSF-2 MISSED APPROACH: Climb to 5800 then climbing right turn to 10000 on heading 048° and on GLL VORTAC R-136 to CEDUK/GLL 16 DME and hold.

D-ATIS ARR 125.6 379.9 DEP 134.025	DENVER APP CON 119.3 307.3 120.35 379.3 (NORTH) (SOUTH)	DENVER TOWER 132.35 239.275	GND CON 121.85 377.1	CLNC DEL 118.75	CPDLC
--	--	---------------------------------------	--------------------------------	---------------------------	-------

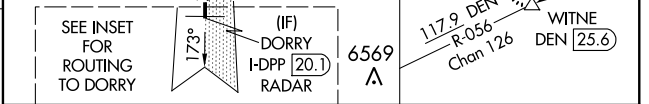
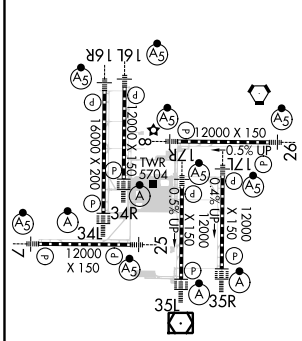
RADAR or GPS REQUIRED



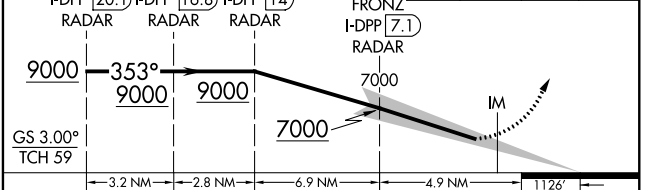
SW-1, 21 MAY 2020 to 18 JUN 2020

SW-1, 21 MAY 2020 to 18 JUN 2020

ELEV 5434	D	TDZE 5370
------------------	----------	------------------



VGSi and ILS glidepath not coincident (VGSi Angle 3.00/TCH 66).	5800	10000	GLL R-136	CEDUK Δ
---	------	-------	-----------	----------------



CATEGORY	A	B	C	D
S-ILS 35R	RA 161/14 150 DA 5520			

SA CATEGORY I ILS - SPECIAL AIRCREW & AIRCRAFT CERTIFICATION REQUIRED