

# EXWNG ONE DEPARTURE (RNAV)

AL-9077 (FAA)

DENVER INTL (DEN)  
DENVER, COLORADO

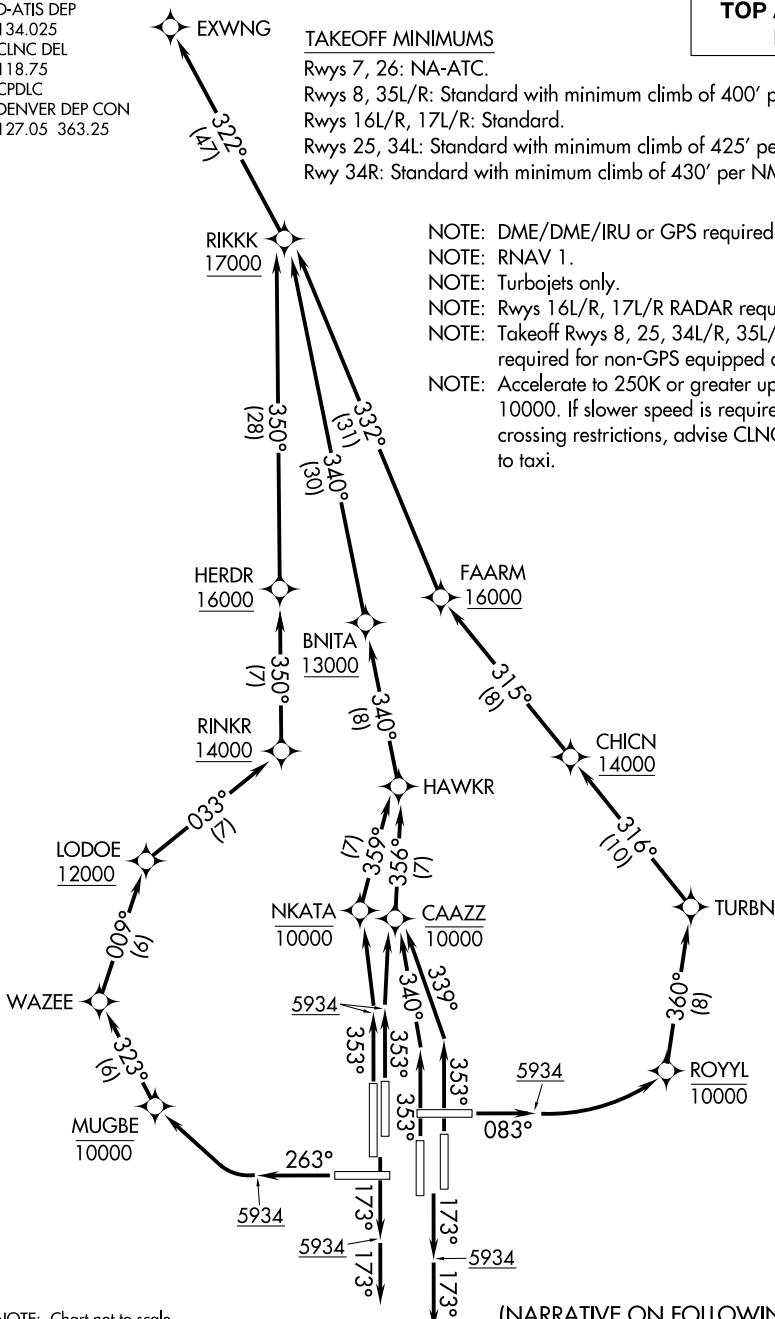
D-ATIS DEP  
134.025  
CLNC DEL  
118.75  
CPDLC  
DENVER DEP CON  
127.05 363.25

**TOP ALTITUDE:  
FL230**

### TAKEOFF MINIMUMS

Rwys 7, 26: NA-ATC.  
Rwys 8, 35L/R: Standard with minimum climb of 400' per NM to 5934.  
Rwys 16L/R, 17L/R: Standard.  
Rwys 25, 34L: Standard with minimum climb of 425' per NM to 5934.  
Rwy 34R: Standard with minimum climb of 430' per NM to 5934.

NOTE: DME/DME/IRU or GPS required.  
NOTE: RNAV 1.  
NOTE: Turbojets only.  
NOTE: Rwys 16L/R, 17L/R RADAR required.  
NOTE: Takeoff Rwys 8, 25, 34L/R, 35L/35R - RADAR required for non-GPS equipped aircraft.  
NOTE: Accelerate to 250K or greater upon reaching 10000. If slower speed is required to meet crossing restrictions, advise CLNC DEL prior to taxi.



NOTE: Chart not to scale.

(NARRATIVE ON FOLLOWING PAGE)

SW-1, 21 MAY 2020 to 18 JUN 2020

SW-1, 21 MAY 2020 to 18 JUN 2020

# EXWNG ONE DEPARTURE (RNAV)