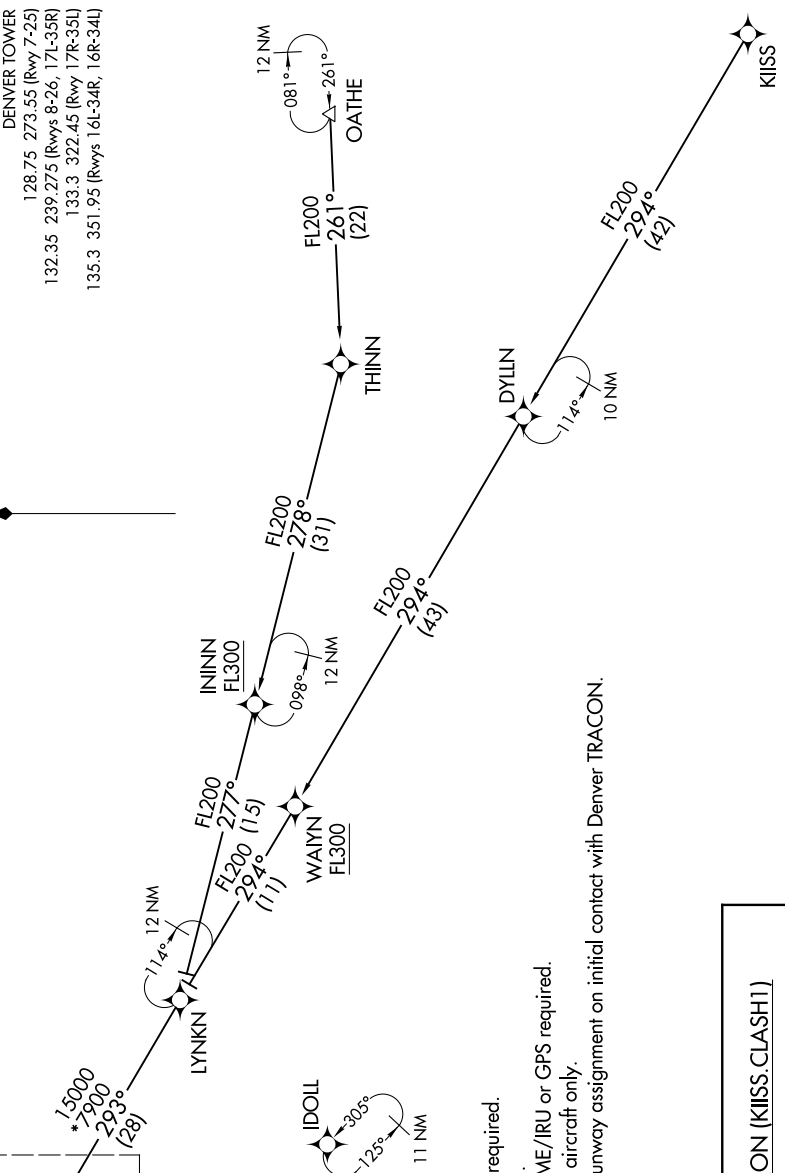


# CLASH ONE ARRIVAL (RNAV) Transition Routes

SW-1, 21 MAY 2020 to 18 JUN 2020

DENVER APP CON  
126.55 269.525  
D-ATS ARR  
125.6 379.9  
DENVER TOWER  
128.75 273.55 (Rwy 7-25)  
132.35 239.275 (Rwys 8-26, 17L-35R)  
133.3 322.45 (Rwy 17R-35L)  
135.3 351.95 (Rwys 16L-34R, 16R-34L)



NOTE: Chart not to scale.

(CONTINUED ON FOLLOWING PAGE)

SW-1, 21 MAY 2020 to 18 JUN 2020

See following page  
for arrival routes

- NOTE: RADAR required.
- NOTE: RNAV 1.
- NOTE: DME/DME/IRU or GPS required.
- NOTE: Turbojet aircraft only.
- NOTE: Expect runway assignment on initial contact with Denver TRACON.

KLISS TRANSITION (KLISS.CLASH1)  
OATHE TRANSITION (OATHE.CLASH1)

# CLASH ONE ARRIVAL (RNAV) Transition Routes