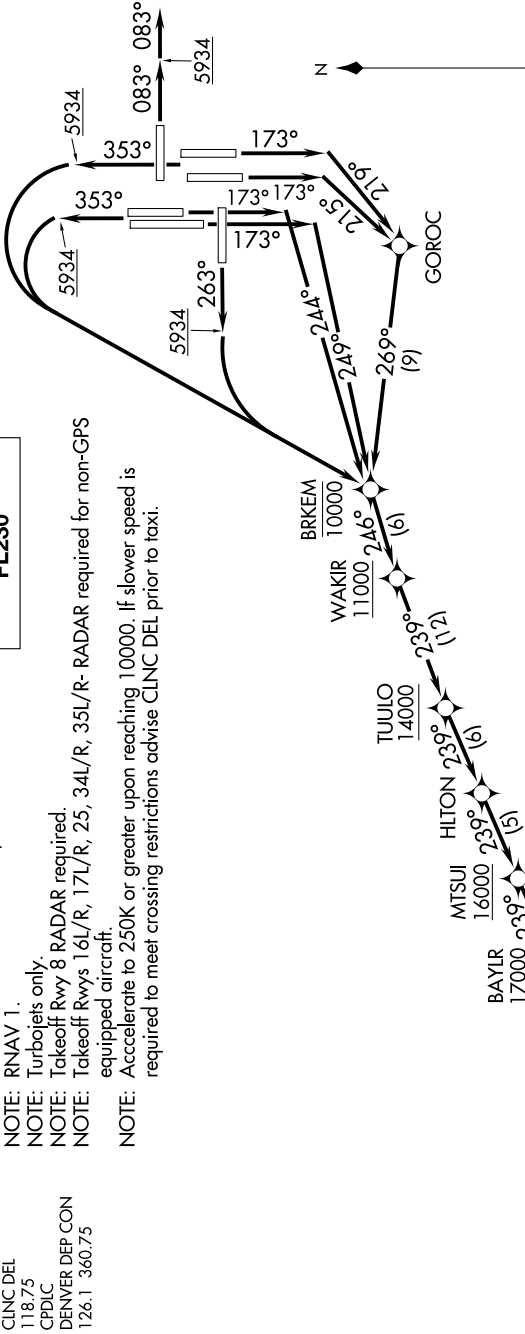


0200 1-1-21 MAY 2020 to 18 JUN 2020

**TOP ALTITUDE:  
FL230**

- NOTE: DME/DME/IRU or GPS required.
- NOTE: RNAV 1.
- NOTE: Turbojets only.
- NOTE: Takeoff Rwy 8 RADAR required.
- NOTE: Takeoff Rwys 16L/R, 17L/R, 25, 34L/R, 35L/R- RADAR required for non-GPS equipped aircraft.
- NOTE: Accelerate to 250K or greater upon reaching 10000. If slower speed is required to meet crossing restrictions advise CLNC DEL prior to taxi.

D-ATIS DEP  
134.025  
CLNC DEL  
118.75  
CPDLC  
DENVER DEP CON  
126.1 360.75



FL190 \*16500 242° (28)  
BOBBA  
FL190 \*16500 242° (27)  
TEHRU \*16500 242° (26)  
FL190 \*15700 208° (29)  
BLUE MESA HBU  
FL230

TAKEOFF MINIMUMS  
Rwys 7, 26: NA - ATC.  
Rwy 8: Standard.  
Rwy 16L: Standard with minimum climb of 425' per NM to 5934, then minimum climb of 230' per NM to 16500.  
Rwy 16R: Standard with minimum climb of 420' per NM to 5934, then minimum climb of 235' per NM to 16500.  
Rwy 17L: Standard with minimum climb of 450' per NM to 5934, then minimum climb of 225' per NM to 16500.  
Rwy 17R: Standard with minimum climb of 460' per NM to 5934, then minimum climb of 230' per NM to 16500.  
Rwy 25: Standard with minimum climb of 410' per NM to 5934, then minimum climb of 245' per NM to 16500.  
Rwys 34L/R: Standard with minimum climb of 400' per NM to 5934, then minimum climb of 230' per NM to 16500.  
Rwys 35L/R: Standard with minimum climb of 400' per NM to 5934, then minimum climb of 225' per NM to 16500.

NOTE: Chart not to scale.

(NARRATIVE ON FOLLOWING PAGE)

SW-1, 21 MAY 2020 to 18 JUN 2020