

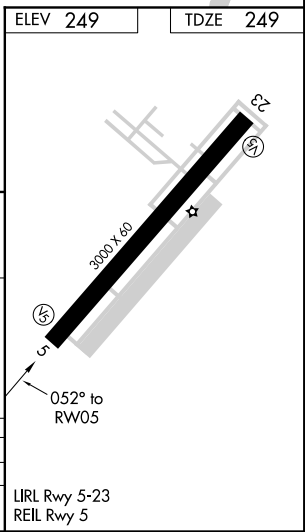
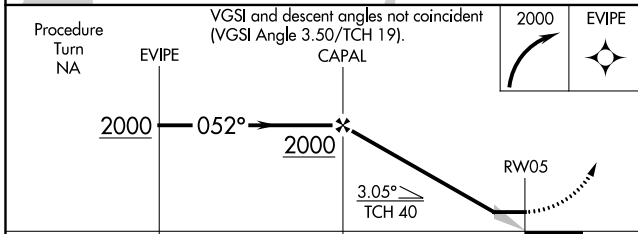
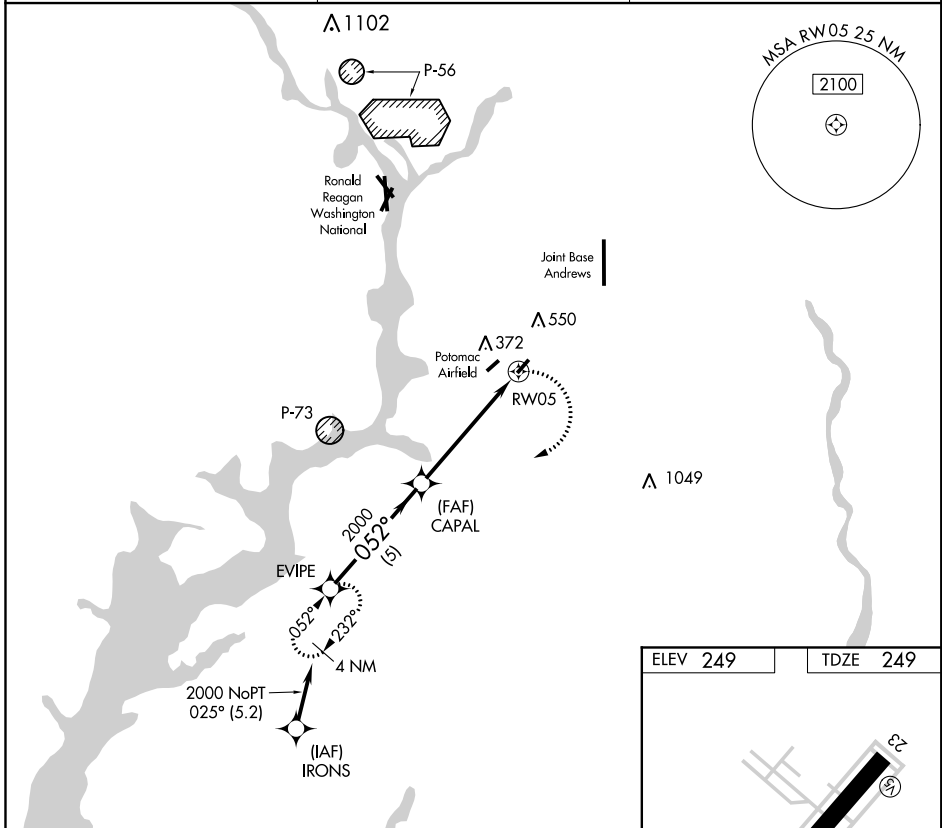
APP CRS	Rwy Idg	3000
052°	TDZE	249
	Apt Elev	249

RNAV (GPS) RWY 5

WASHINGTON EXECUTIVE/HYDE FIELD (W32)

RNP APCH.	MISSED APPROACH: Climbing right turn to 2000 direct EVIPE WP and hold.
<p>Use Joint Base Andrews altimeter setting. Circling NW Rwy 5-23 NA.</p>	

ADW ATIS 133.675 251.05	POTOMAC APP CON 124.7 338.2	UNICOM 122.8 (CTAF)
-----------------------------------	---------------------------------------	-------------------------------



CATEGORY	A	B	C	D
LNAV MDA	660-1	411 (500-1)		NA
CIRCLING	680-1 431 (500-1)	860-1 611 (700-1)		NA

RNAV (GPS) RWY 5

NE-3, 21 MAY 2020 to 18 JUN 2020

NE-3, 21 MAY 2020 to 18 JUN 2020