

WAAS CH <b>56605</b> <b>W05A</b>	APP CRS <b>047°</b>	Rwy Idg <b>5003</b> TDZE <b>1219</b> Apt Elev <b>1219</b>
--	------------------------	---

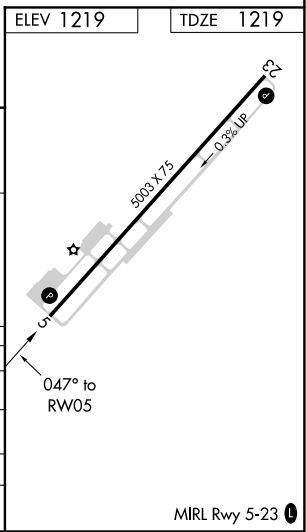
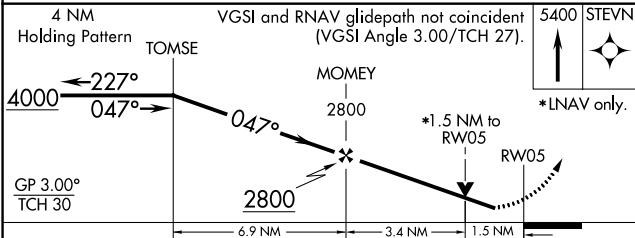
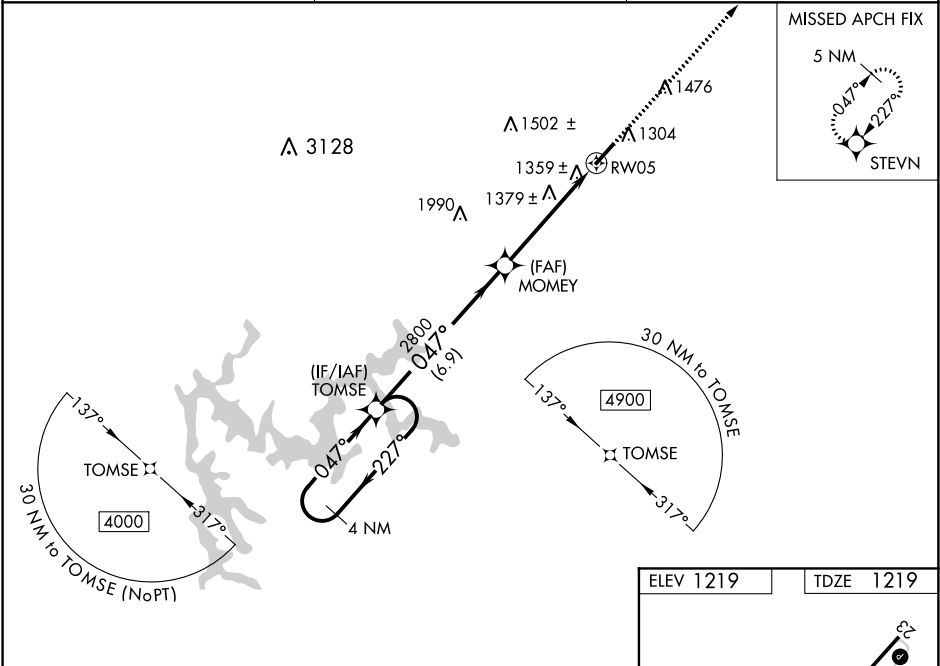
# RNAV (GPS) RWY 5

CHEROKEE COUNTY (CNI)

**▼** DME/DME RNP-0.3 NA. Visibility reduction by helicopters NA. When local altimeter setting not received, use Marietta altimeter setting and increase all DA 77 feet and all MDA 80 feet; increase LPV all Cats visibility 1/4 mile, increase all LNAV/VNAV all Cats visibility 3/8 mile, increase LNAV Cats C and D visibility 1/8 mile. Baro-VNAV and VDP NA when using Marietta altimeter setting. Circling Rwy 23 NA at night. For uncompensated Baro-VNAV systems, LNAV/VNAV NA below -17°C (2°F) or above 36°C (96°F).

**MISSED APPROACH:** Climb to 5400 direct STEVN and hold, continue climb-in-hold to 5400.

AWOS-3 <b>119.825</b>	ATLANTA APP CON <b>121.0 268.7</b>	UNICOM <b>123.0 (CTAF) 0</b>
--------------------------	---------------------------------------	---------------------------------



CATEGORY	A	B	C	D
LPV DA		1469-7/8	250 (300-7/8)	
LNAV/VNAV DA		1554-1 1/8	335 (400-1 1/8)	
LNAV MDA	1640-1	421 (500-1)	1640-1 1/4	421 (500-1 1/4)
CIRCLING	1720-1	501 (600-1)	1720-1 1/2	1780-2
			501 (600-1 1/2)	561 (600-2)

SE-4, 21 MAY 2020 to 18 JUN 2020

SE-4, 21 MAY 2020 to 18 JUN 2020