

APP CRS 272°	Rwy Idg 4006
	TDZE -135
	Apt Elev -129

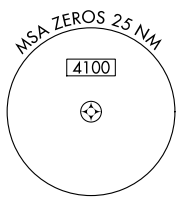
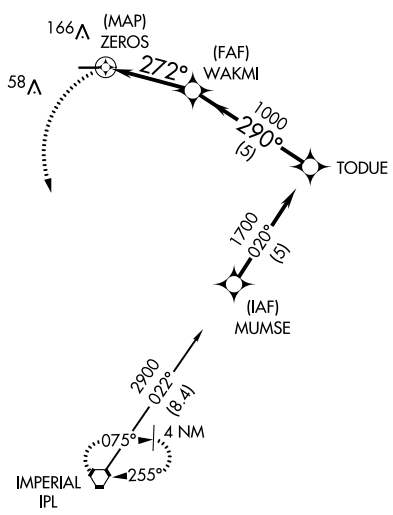
RNAV (GPS) RWY 26

BRAWLEY MUNI (BWC)

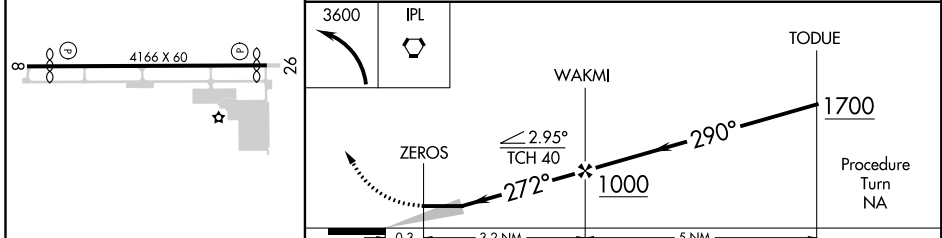
NA GPS or RNP-0.3 required. DME/DME RNP-0.3 NA. Use Imperial County altimeter setting. Circling Rwy 8 NA at night.

MISSED APPROACH: Climbing left turn to 3600 direct IPL VORTAC and hold.

IPL ASOS 132.175	LOS ANGELES CENTER 128.6 291.7	CTAF 122.9
----------------------------	--	----------------------



ELEV -129	TDZE -135
-----------	-----------



CATEGORY	A	B	C	D
LNAV MDA	360-1	495 (500-1)	360-1¼ 495 (500-1¼)	NA
CIRCLING	560-1	689 (700-1)	560-2 689 (700-2)	NA

REIL Rwy 8 and 26
MIRL Rwy 8-26

SW-3, 21 MAY 2020 to 18 JUN 2020

SW-3, 21 MAY 2020 to 18 JUN 2020