

WAAS CH <b>86718</b> <b>W17A</b>	APP CRS <b>174°</b>	Rwy Idg <b>5001</b> TDZE <b>971</b> Apt Elev <b>971</b>
--	------------------------	---

# RNAV (GPS) RWY 17

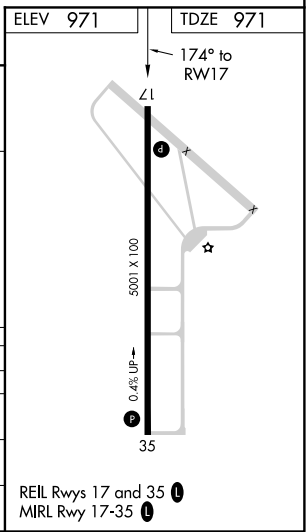
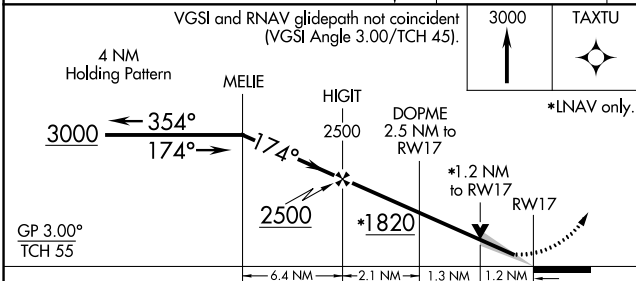
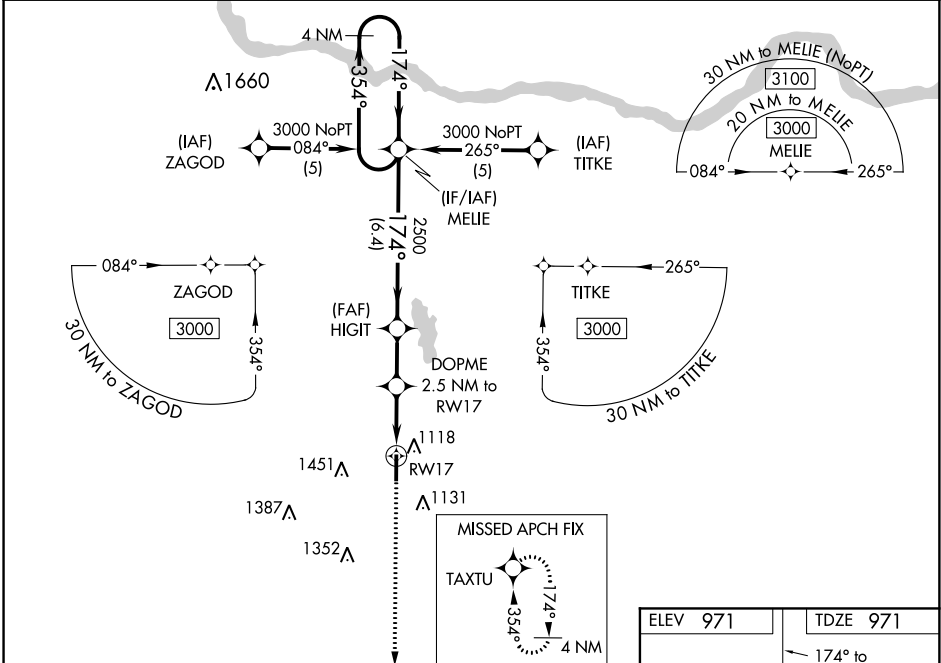
PAULS VALLEY MUNI (PVJ)

RNP APCH.

**⚠** When local altimeter setting not received, use Ardmore Downtown Executive altimeter setting and increase all DA 97 feet and all MDA 100 feet and LNAV/VNAV visibility ¼ SM all Cats, LNAV Cat C, D visibility ¼ SM and Circling Cat C visibility ¼ SM, and Cat D visibility ½ SM. Baro-VNAV and VDP NA when using Ardmore Downtown Executive altimeter setting. For uncompensated Baro-VNAV systems, LNAV/VNAV NA below -16°C or above 46°C.

**MISSED APPROACH:**  
Climb to 3000 direct TAXTU and hold.

AWOS-3 <b>118.675</b>	FORT WORTH CENTER <b>124.75 323.0</b>	UNICOM <b>122.8</b> (CTAF) <b>①</b>
--------------------------	--	--



CATEGORY	A	B	C	D
LPV DA	1171-1 200 (200-1)			
LNAV/VNAV DA	1413-1½ 442 (500-1½)			
LNAV MDA	1420-1 449 (500-1)	1420-1¼ 449 (500-1¼)		1420-1¾ 449 (500-1¾)
CIRCLING	1440-1 469 (500-1)	1540-1½ 569 (600-1½)		1760-2 789 (800-2)

SC-1, 21 MAY 2020 to 18 JUN 2020

SC-1, 21 MAY 2020 to 18 JUN 2020