

SOUTH HILL, VIRGINIA

AL-6793 (FAA)

17117

WAAS CH 93718 W19A	APP CRS 187°	Rwy Idg TDZE Apt Elev 5002 441 441
--	------------------------	--

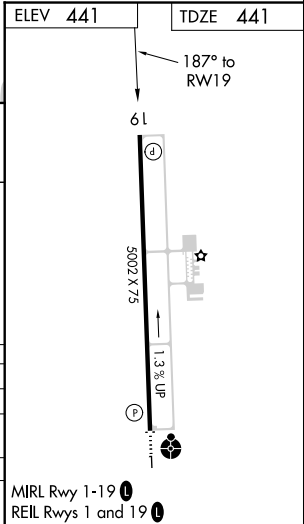
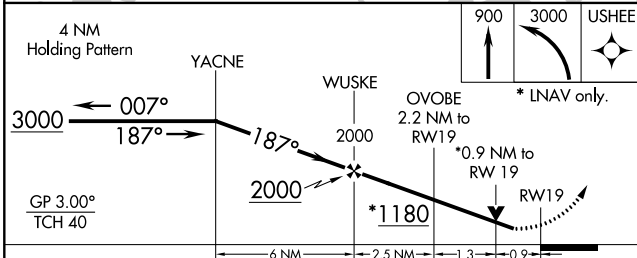
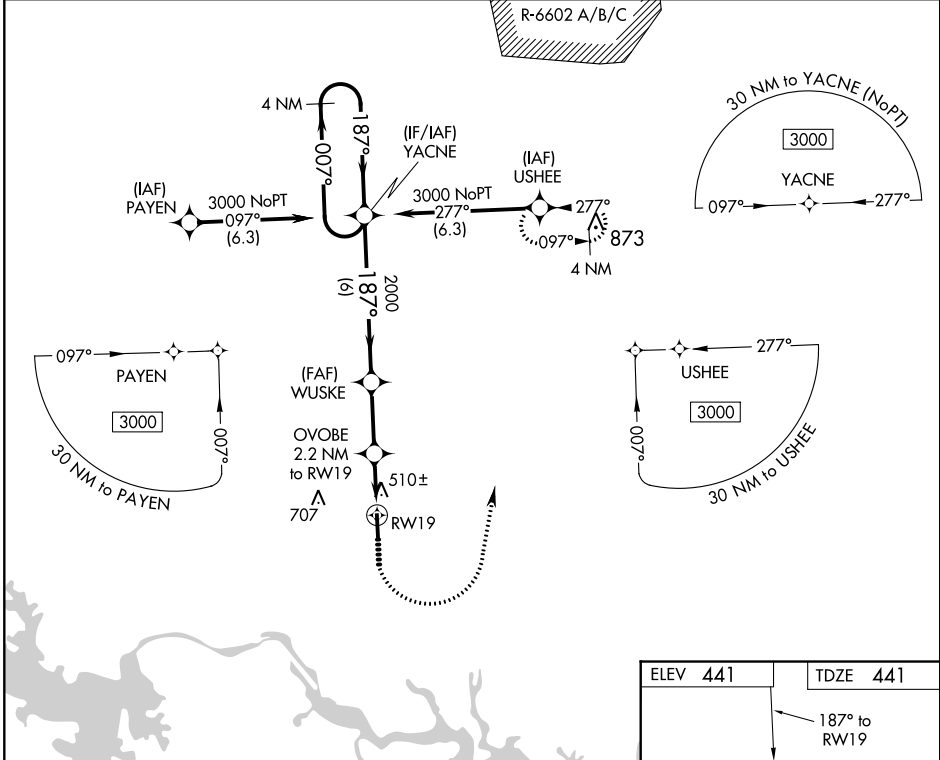
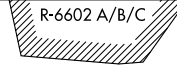
RNAV (GPS) RWY 19

MECKLENBURG-BRUNSWICK RGNL (A VC)

V For uncompensated Baro-VNAV systems, LNAV/VNAV NA below -15°C (5°F) or above 54°C (130°F). DME/DME RNP-0.3 NA. Rwy 19 helicopter visibility reduction below ¾ SM NA.

MISSED APPROACH: Climb to 900 then climbing left turn to 3000 direct USHEE and hold.

AWOS-3 127.525	WASHINGTON CENTER 118.75 377.1	GCO 135.075	UNICOM 122.8 (CTAF) 0
--------------------------	--	-----------------------	---------------------------------



CATEGORY	A	B	C	D
LPV DA		691-1	250 (300-1)	
LNAV/VNAV DA		710-1	269 (300-1)	
LNAV MDA		760-1	319 (400-1)	
C CIRCLING	860-1 419 (500-1)	900-1 459 (500-1)	1060-1¾ 619 (700-1¾)	1060-2 619 (700-2)

MIRL Rwy 1-19 0
REIL Rwys 1 and 19 0

SOUTH HILL, VIRGINIA

Amdt 1 27APR17

MECKLENBURG-BRUNSWICK RGNL (A VC)

36°41'N-78°03'W

RNAV (GPS) RWY 19

NE-3, 21 MAY 2020 to 18 JUN 2020

NE-3, 21 MAY 2020 to 18 JUN 2020