

# NDB RWY 18

CLARK RGNL (JVY)

LOM JV <b>331</b>	APP CRS <b>182°</b>	Rwy Idg TDZE Apt Elev	<b>7000</b> <b>476</b> <b>476</b>
----------------------	------------------------	-----------------------------	---

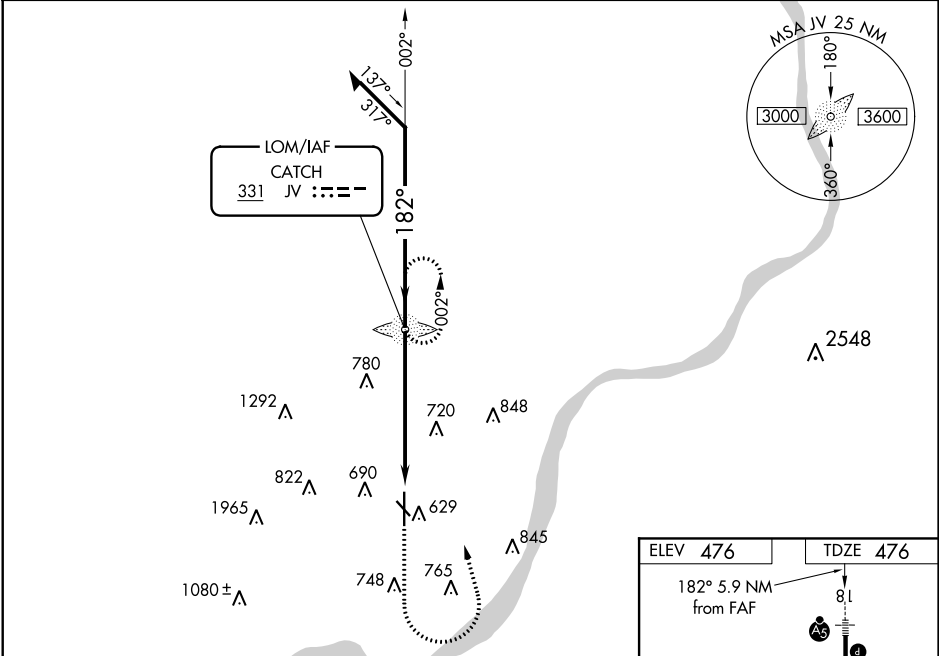
RADAR required for procedure entry.

**▽** Circling NA for Cat D southwest of Rws 14 and 36. Circling Rwy 14, 32 NA at night. For inop ALS, increase S-18 Cats A and B visibility to 1 SM and Cats C and D to 1 3/4 SM. When local altimeter setting not received, use Louisville Muhammad Ali Intl altimeter setting and increase all MDAs 40 feet and Circling visibility Cat C 1/8 SM. For inop ALS when using Louisville Muhammad Ali Intl altimeter setting, increase S-18 Cats A and B visibility to 1 SM.



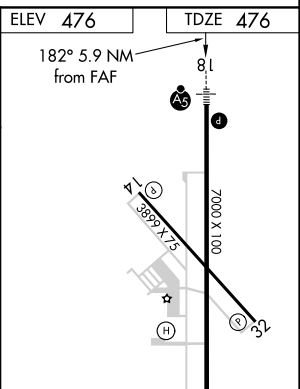
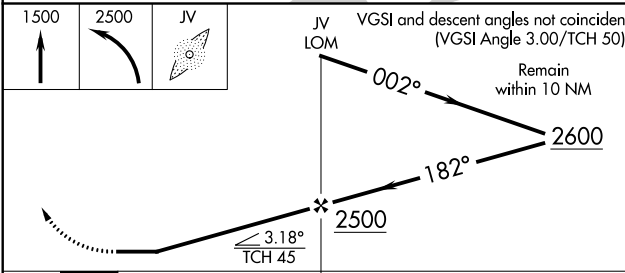
MISSED APPROACH: Climb to 1500 then climbing left turn to 2500 direct CATCH LOM and hold.

AWOS-3 <b>118.575</b>	LOUISVILLE APP CON <b>132.075 327.0</b>	CLNC DEL <b>118.05</b>	UNICOM <b>122.7 (CTAF) 0</b>
--------------------------	--	---------------------------	---------------------------------



EC-2, 21 MAY 2020 to 18 JUN 2020

EC-2, 21 MAY 2020 to 18 JUN 2020



CATEGORY	A	B	C	D
S-18	1080-3/4 604 (700-3/4)	1080-1 604 (700-1)	1080-1 3/4 604 (700-1 3/4)	1100-2 624 (700-2)
<b>C</b> CIRCLING	1080-1 604 (700-1)		1080-1 3/4 604 (700-1 3/4)	1100-2 624 (700-2)

ELEV 476	TDZE 476
182° 5.9 NM from FAF	
REIL Rws 14 and 32	
REIL Rws 18 and 36 36	
MRL Rws 14-32 and 18-36	
FAF to MAP 5.9 NM	
Knots	60 90 120 150 180
Min:Sec	5:54 3:56 2:57 2:22 1:58