

LOM VU 346	APP CRS 224°	Rwy Idg 5499 TDZE 584 Apt Elev 609
----------------------	------------------------	---

NDB RWY 22L

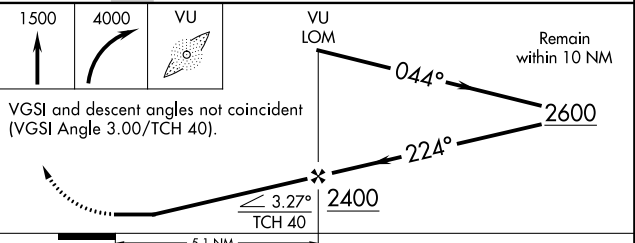
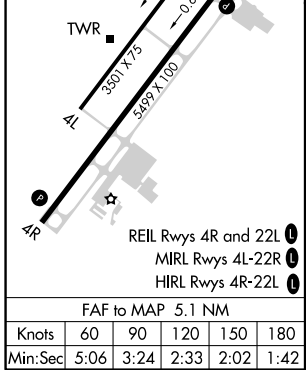
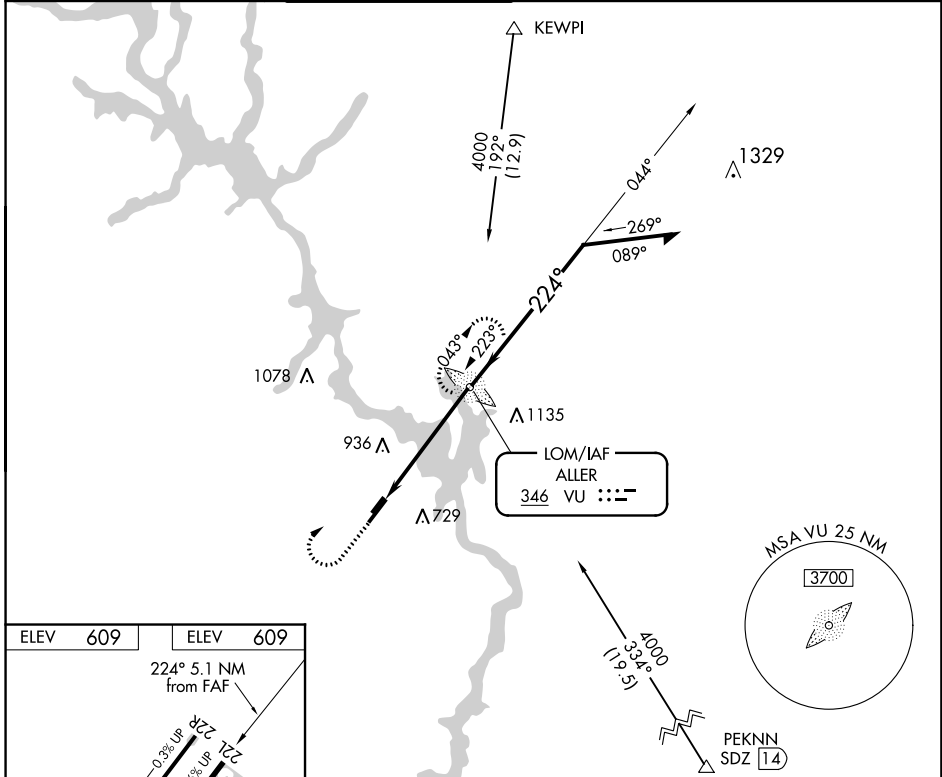
STANLY COUNTY (VUJ)

⚠ Circling to Rwy 4L/22R NA at night. When local altimeter setting not received, use Asheboro altimeter setting and increase all MDA 60 feet; increase S-22L Cats C and D, and Circling Cats C and D visibility ¼ mile.

ASR/PAR

MISSED APPROACH: Climb to 1500 then climbing right turn to 4000 direct ALLER LOM and hold, continue climb-in-hold to 4000.

AWOS-3 128.175	CHARLOTTE APP CON 128.325 307.8	STANLY COUNTY TOWER* 126.275 (CTAF) 291.9	GND CON 121.75 254.375	CLNC DEL 121.75 254.375	UNICOM 123.0
--------------------------	---	---	----------------------------------	-----------------------------------	------------------------



CATEGORY	A	B	C	D
S-22L	1240-1	656 (700-1)	1240-1¾ 656 (700-1¾)	1240-2 656 (700-2)
CIRCLING	1260-1	651 (700-1)	1260-1¾ 651 (700-1¾)	1260-2 651 (700-2)

SE-2, 21 MAY 2020 to 18 JUN 2020

SE-2, 21 MAY 2020 to 18 JUN 2020