

LOC I-VUJ	APP CRS	Rwy Idg	5499
110.55	223°	TDZE	584
		Apt Elev	609

ILS or LOC RWY 22L

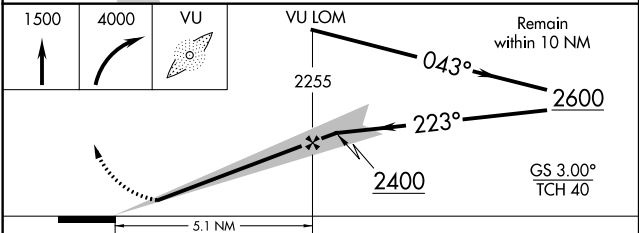
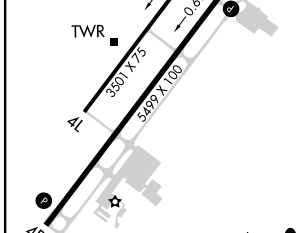
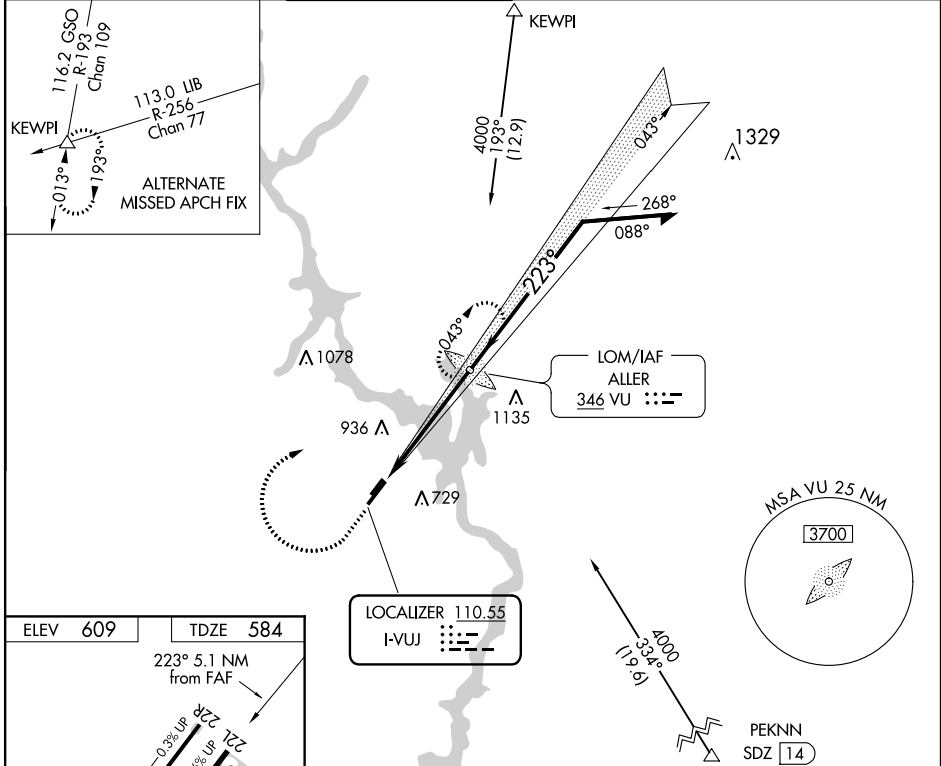
STANLY COUNTY (VUJ)

ADF required.

⚠ Circling Rwy 4L, 22R NA at night. When local altimeter setting not received, use Asheboro altimeter setting; increase DA to 953 and all visibilities 1/8 SM; ASR/PAR increase all MDAs 60 feet and visibility Cats C and D 1/4 SM.

MISSED APPROACH: Climb to 1500 then climbing right turn to 4000 direct ALLER LOM and hold, continue climb-in-hold to 4000.

AWOS-3	CHARLOTTE APP CON	STANLY COUNTY TOWER*	GND CON	CLNC DEL	UNICOM
128.175	128.325 307.8	126.275 (CTAF) 0 291.9	121.75 254.375	121.75 254.375	123.0



FAF to MAP 5.1 NM					
Knots	60	90	120	150	180
Min:Sec	5:06	3:24	2:33	2:02	1:42
CATEGORY	A	B	C	D	
S-ILS 22L		900-7/8	316 (300-7/8)		
S-LOC 22L	1100-1	516 (500-1)	1100-1 3/8	516 (500-1 3/8)	
CIRCLING	1260-1	651 (700-1)	1260-1 3/4	651 (700-1 3/4)	1260-2
					651 (700-2)

SE-2, 21 MAY 2020 to 18 JUN 2020

SE-2, 21 MAY 2020 to 18 JUN 2020