

VOR/DME CIP <b>112.9</b> Chan <b>76</b>	APP CRS <b>120°</b>	Rwy Idg TDZE Apt Elev <b>N/A</b> <b>N/A</b> <b>1439</b>
---	------------------------	--

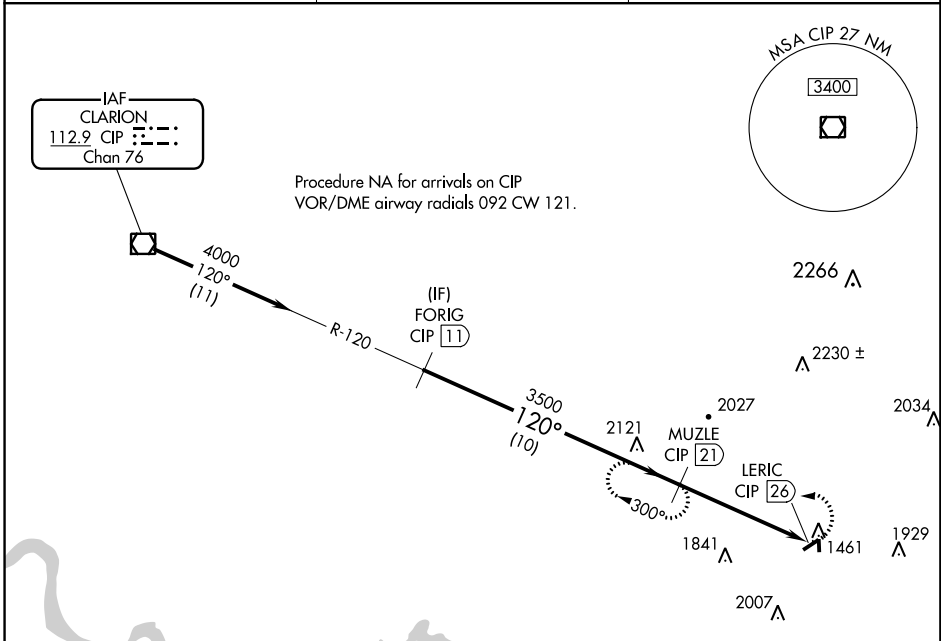
# VOR/DME-A

PUNXSUTAWNEY MUNI (N35)

**NA** Use Indiana Co-Jimmy Stewart Fld altimeter setting.  
Helicopter visibility reduction below 3/4 SM NA.

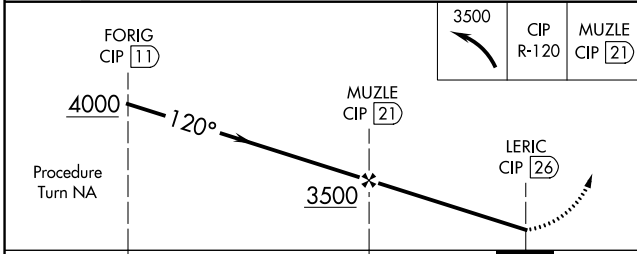
**MISSED APPROACH:** Climbing left turn to 3500 via CIP R-120 to MUZLE/21 DME and hold.

IDI AWOS-3 <b>126.625</b>	CLEVELAND CENTER <b>126.725 291.65</b>	UNICOM <b>123.0 (CTAF) 0</b>
------------------------------	---	---------------------------------



NE-4, 21 MAY 2020 to 18 JUN 2020

NE-4, 21 MAY 2020 to 18 JUN 2020



CATEGORY	A	B	C	D
CIRCLING	2460-1¼ 1021 (1100-1¼)	2460-1½ 1021 (1100-1½)	NA	

ELEV 1439

120° 5 NM from FAF

3003 X 50

0.9% UP

61

2026 X 100

0.3% UP

1

REIL Rwys 1, 6, 19, and 24 0

MIRL Rwys 1-19 and 6-24 0