

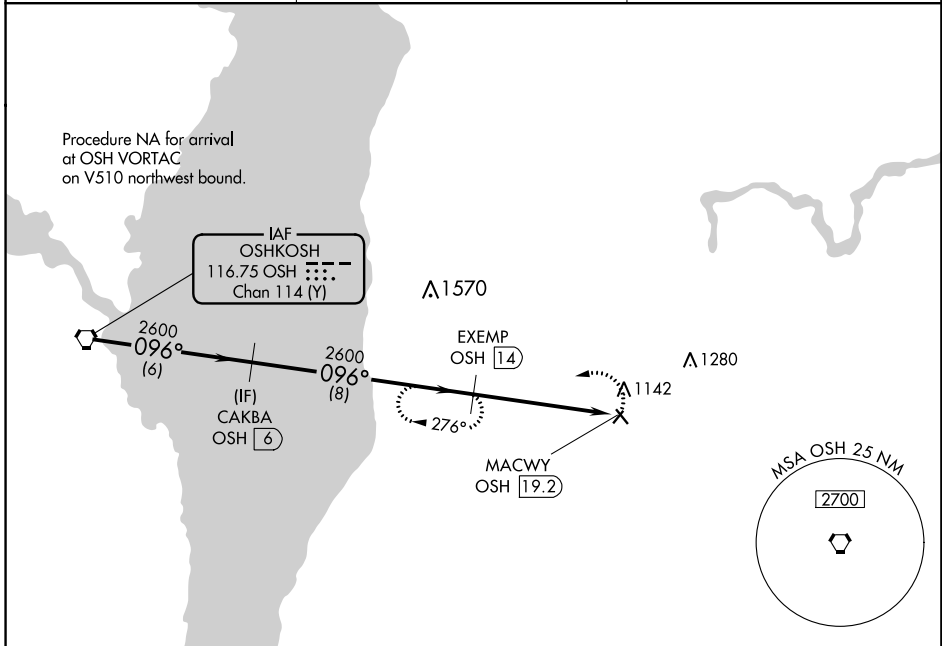
VORTAC OSH <b>111.8</b> Chan <b>55</b>	APP CRS <b>096°</b>	Rwy Idg TDZE Apt Elev	<b>N/A</b> <b>N/A</b> <b>992</b>
--	------------------------	-----------------------------	--

# VOR/DME-A

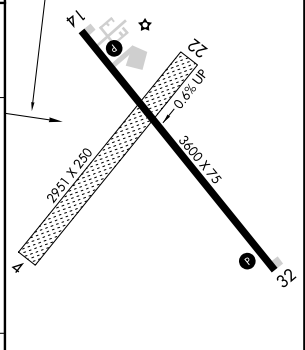
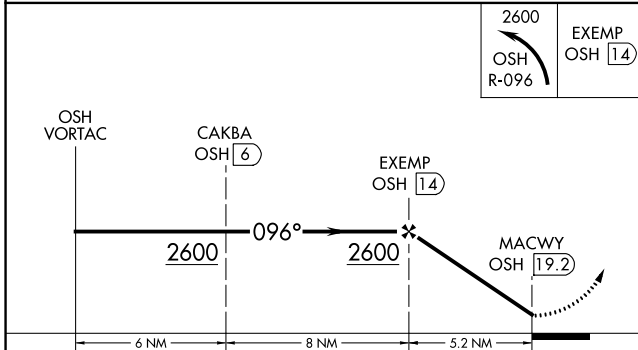
NEW HOLSTEIN MUNI (8D1)

<p><b>NA</b> Circling to Rwy 32 NA at night. Visibility reduction by helicopters NA. Use Oshkosh altimeter setting, when not received use Appleton altimeter setting. Circling NA to Rwy 04/22.</p>	<p>MISSED APPROACH: Climbing left turn to 2600 on OSH VORTAC R-096 to EXEMP/14 DME and hold.</p>
---	--

<p>OSH ASOS <b>125.9</b></p>	<p>MILWAUKEE APP CON <b>127.0 263.075</b></p>	<p>UNICOM <b>123.0</b> (CTAF) <b>0</b></p>
----------------------------------	---	--



ELEV 992	096° 5.2 NM from FAF
----------	----------------------



CATEGORY	A	B	C	D
CIRCLING	1560-1	568 (600-1)	NA	

REIL Rws 14 and 32 **0**  
MIRL Rwy 14-32 **0**

EC-3, 21 MAY 2020 to 18 JUN 2020

EC-3, 21 MAY 2020 to 18 JUN 2020